

OPEN-FILE REPORT
This report has not been edited for conformity with
U.S. Geological Survey editorial standards or
stratigraphic nomenclature.

EXPLANATION

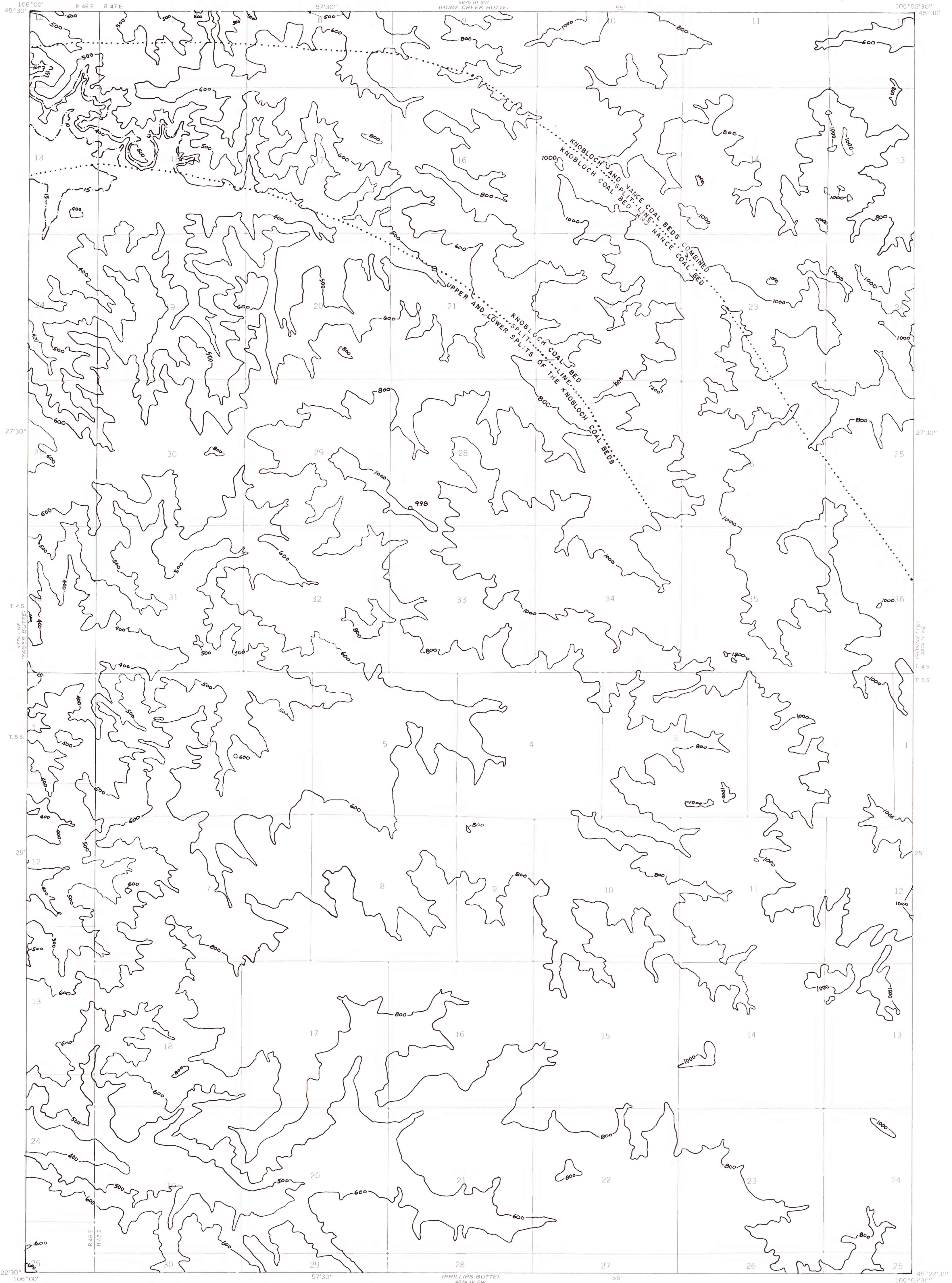
— 600 —
OVERBURDEN ISOPACH—Showing thickness of overburden, in feet, from the surface to the top of the coal bed. Overburden isopachs within the stripping limit are omitted where they are too close to a mining-ratio contour for map readability. Isopach interval 200 feet (61 m) with an intermediate 500-foot isopach.

○ 998
DRILL HOLE—Showing thickness of overburden, in feet, from the surface to the top of the coal bed.

----- 10 -----
MINING-RATIO CONTOUR—Number indicates cubic yards of overburden per ton of recoverable coal by surface-mining methods. Contours shown only in areas suitable for surface mining within the stripping limit.

To convert feet to meters, multiply feet by 0.3048.

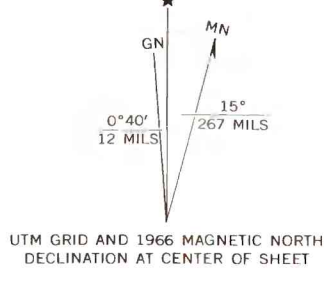
To convert yds³/ton to m³/metric ton, multiply yds³/ton by 0.842.



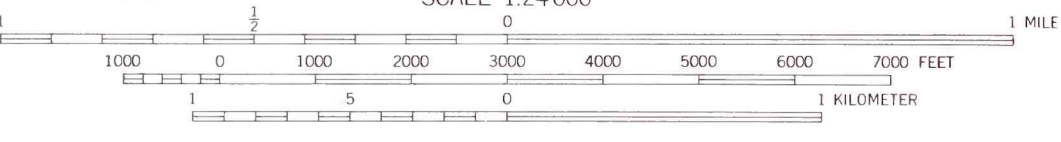
Base map from U.S. Geological Survey, 1966

SCALE 1:24,000

Compiled in 1977



UTM GRID AND 1966 MAGNETIC NORTH
DECLINATION AT CENTER OF SHEET



QUADRANGLE LOCATION

**COAL RESOURCE OCCURRENCE MAP OF THE THREEMILE BUTTES QUADRANGLE,
POWDER RIVER COUNTY, MONTANA
BY
COLORADO SCHOOL OF MINES RESEARCH INSTITUTE
1979**

PLATE 38

OVERBURDEN ISOPACH AND MINING-RATIO
MAP OF THE KNOBLOCH COAL BED AND THE
UPPER SPLIT OF THE KNOBLOCH COAL BED