

OPEN-FILE REPORT  
This report has not been edited for conformity with  
U.S. Geological Survey editorial standards or  
stratigraphic nomenclature.

EXPLANATION

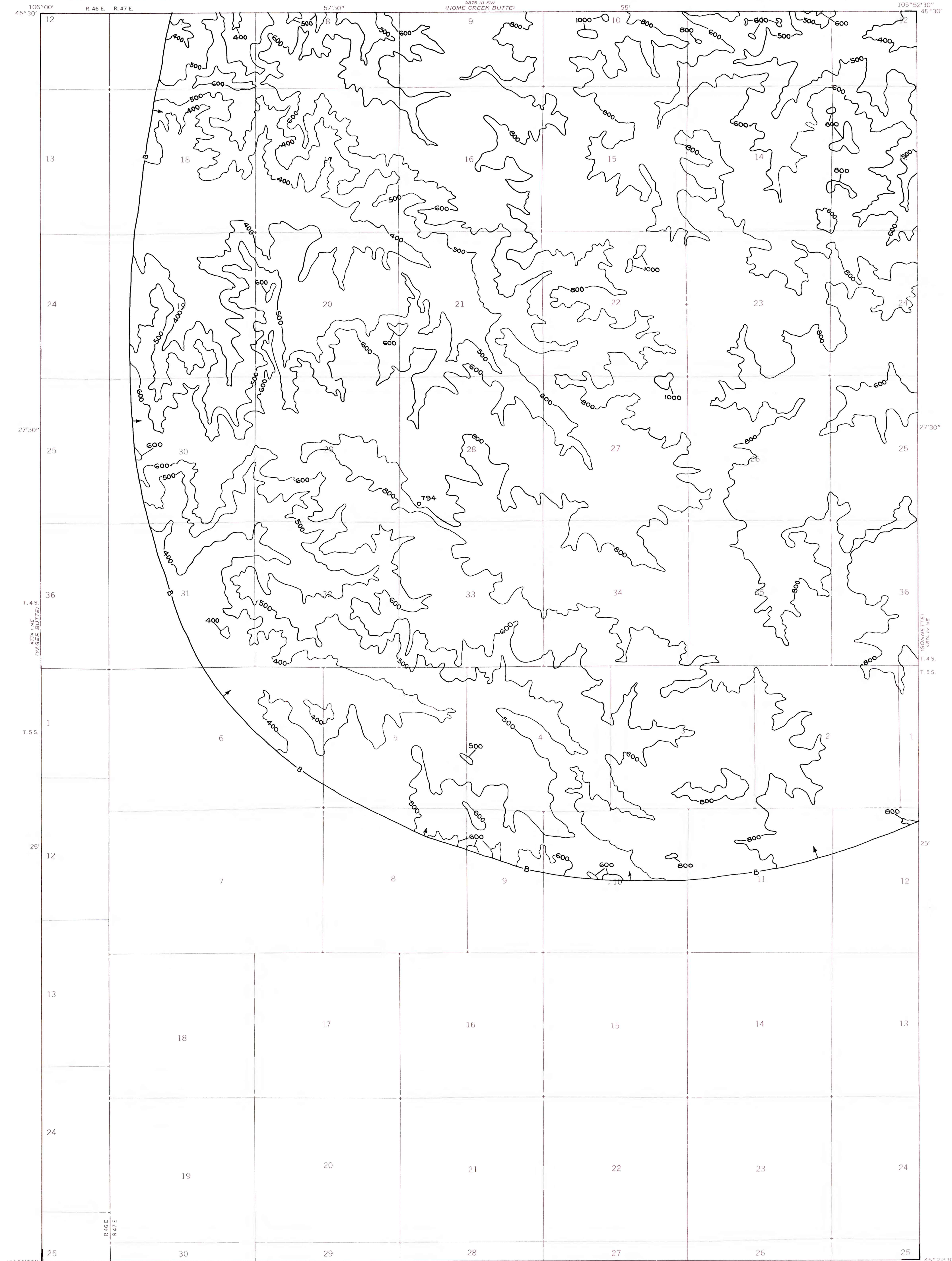
— 600 —  
OVERBURDEN ISOPACH—Showing thickness of overburden, in feet, from the surface to the top of the coal bed. Isopach interval 200 feet (61 m) with an intermediate 500-foot isopach.

↑ B ↑  
BOUNDARY OF COAL 5 FEET OR MORE THICK—  
Drawn along the outcrop of coal bed and/or the inferred contact between burned and unburned coal and/or the 5-foot coal isopach. Arrows point toward area of coal 5 feet or more thick.

○ 794  
DRILL HOLE—Showing thickness of overburden, in feet, from the surface to the top of the coal bed.

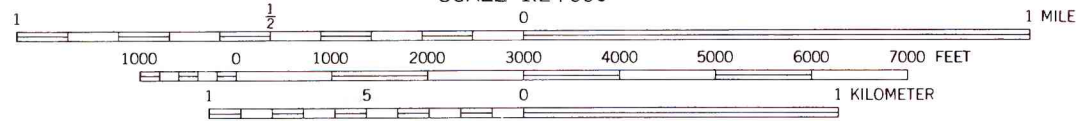
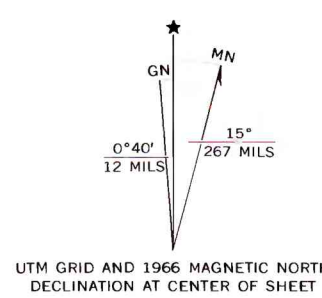
To convert feet to meters, multiply feet by 0.3048.

To convert yds<sup>3</sup>/ton to m<sup>3</sup>/metric ton, multiply yds<sup>3</sup>/ton by 0.842.



Base map from U.S. Geological Survey, 1966

Compiled in 1977



**COAL RESOURCE OCCURRENCE MAP OF THE THREEMILE BUTTES QUADRANGLE,  
POWDER RIVER COUNTY, MONTANA  
BY  
COLORADO SCHOOL OF MINES RESEARCH INSTITUTE  
1979**

PLATE 35  
OVERBURDEN ISOPACH AND MINING-RATIO  
MAP OF THE LOWER SPLIT OF  
THE SAWYER COAL BED