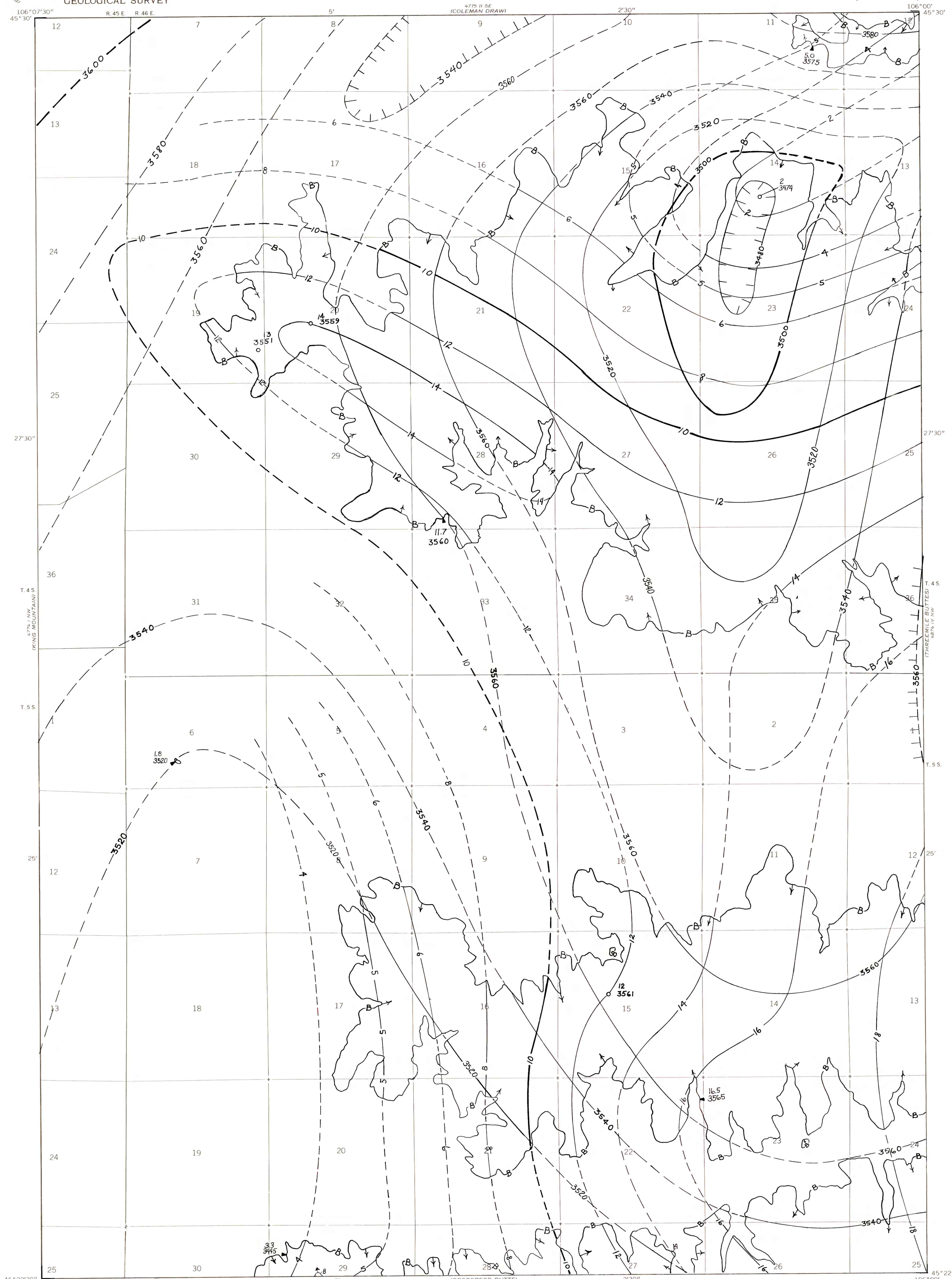
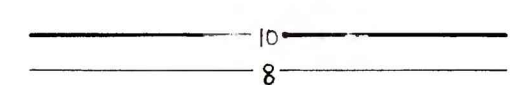


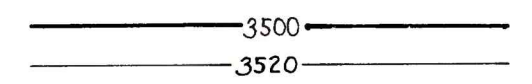
OPEN-FILE REPORT
This report has not been edited for conformity with
U.S. Geological Survey editorial standards or
stratigraphic nomenclature.



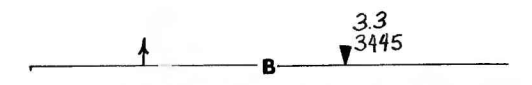
EXPLANATION



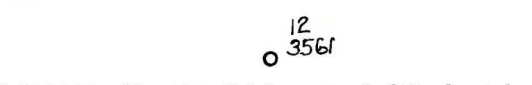
ISOPACHS OF THE COAL BED—Showing thickness, in feet. Dashed where projected beyond boundary of coal. Isopach interval 2 feet, with an intermediate 5-foot isopach.



STRUCTURE CONTOURS—Drawn on the top of the coal bed. Dashed where projected beyond boundary of coal. Hachures indicate a closed depression. Contour interval 20 feet (6.1 m). Datum is mean sea level.



BOUNDARY OF COAL DEPOSIT—Drawn along the outcrop of coal bed and/or the contact between burned and unburned coal (dashed where inferred by present author beyond the limits of original data). Arrows point toward coal-bearing area. Numbers at triangle are coal bed thickness and altitude at the top of the coal bed, measured in feet.



DRILL HOLE—Showing thickness and altitude at the top of the coal bed, in feet.

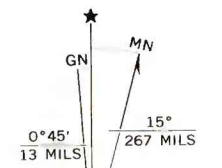
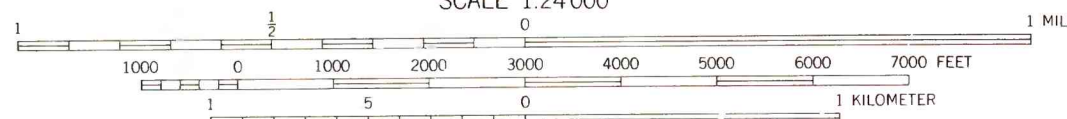
To convert feet to meters, multiply feet by 0.3048.

Base map from U.S. Geological Survey, 1967

(GOODSPEED BUTTE)
47° 1' 15\"/>

SCALE 1:24,000

Compiled in 1977



UTM GRID AND 1967 MAGNETIC NORTH
DECLINATION AT CENTER OF SHEET



COAL RESOURCE OCCURRENCE MAP OF THE YAGER BUTTE QUADRANGLE,
POWDER RIVER COUNTY, MONTANA

BY
COLORADO SCHOOL OF MINES RESEARCH INSTITUTE
1979

PLATE 17
ISOPACH AND STRUCTURE CONTOUR
MAP OF THE UNNING COAL BED