

4773 II NE
(HAMILTON DRAW)

UNITED STATES
DEPARTMENT OF THE INTERIOR
GEOLOGICAL SURVEY

BEAR CREEK SCHOOL QUADRANGLE
MONTANA—POWDER RIVER CO.
7.5 MINUTE SERIES (TOPOGRAPHIC)

4773 II NW
(REANUS CREEK)

OPEN FILE REPORT 79-106
PLATE 44 OF 59

OPEN-FILE REPORT
This report has not been edited for con-
formity with U.S. Geological Survey edito-
rial standards or stratigraphic nomencla-
ture

EXPLANATION

5
6

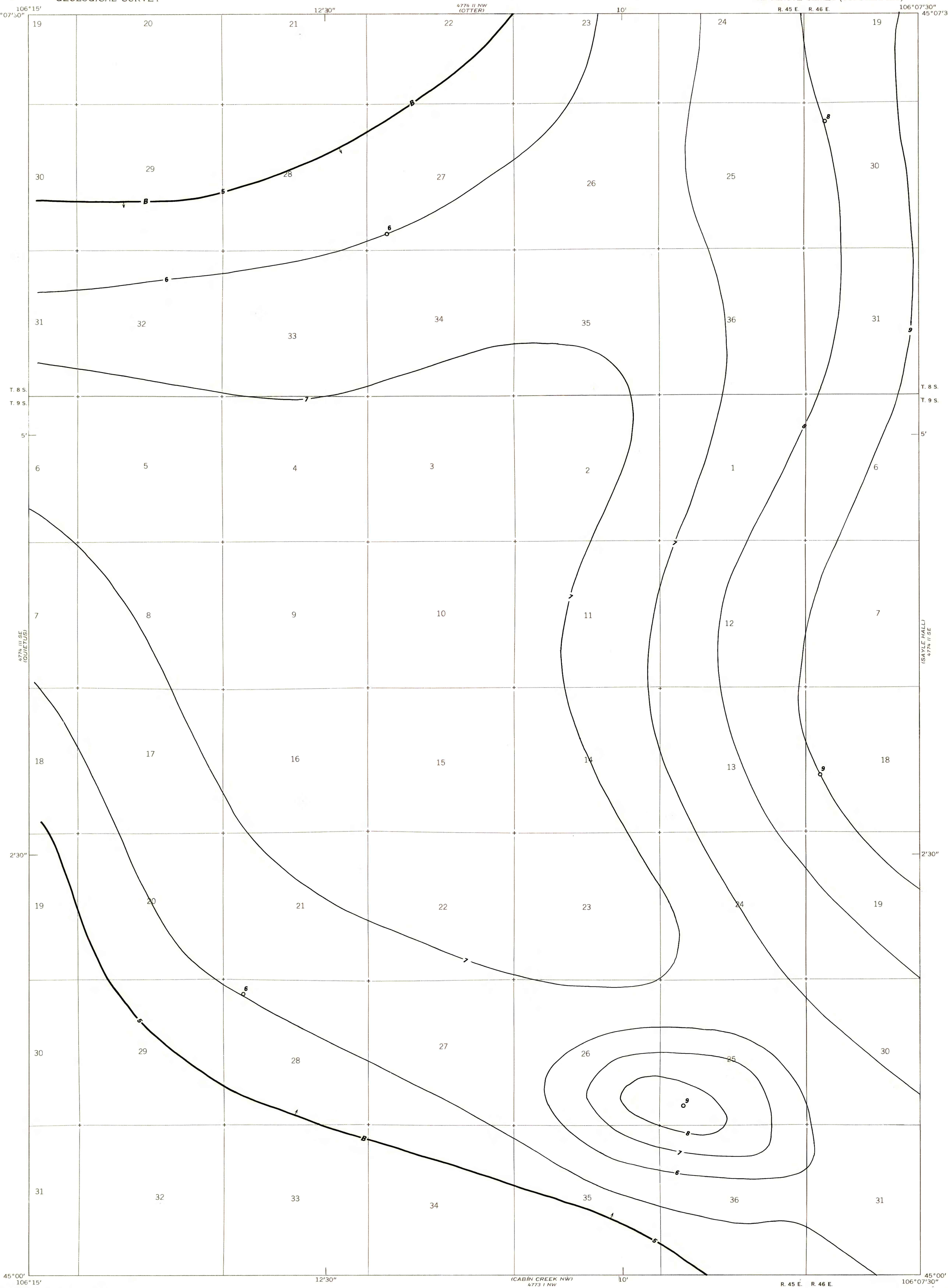
ISOPACHS OF THE COAL BED--
Showing thickness, in feet.
Isopach interval 1 foot
(0.3 m). Isopachs not shown
where coal is less than 5
feet thick.

B

BOUNDARY OF RESERVE BASE
COAL--Drawn along the 5-foot
coal isopach. Arrows point
toward area of Reserve Base
coal.

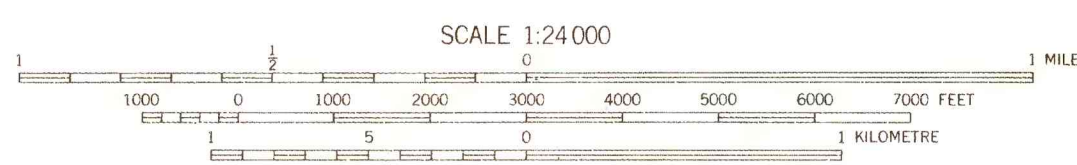
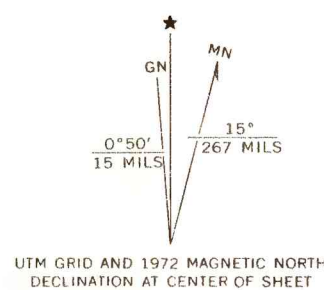
8
DRILL HOLE--Showing thickness
of the coal bed, in feet.

To convert feet to meters,
multiply feet by 0.3.



4773 II NE
(BOX ELDER DRAW)

Base from U.S. Geological Survey, 1969



Compiled in 1977

4773 II NW
(CABIN CREEK NE)

COAL RESOURCE OCCURRENCE AND COAL DEVELOPMENT POTENTIAL
MAPS OF THE BEAR CREEK SCHOOL QUADRANGLE,
POWDER RIVER COUNTY, MONTANA

By
E. J. McKay, B. A. BUTLER, AND L. N. ROBINSON
1979

PLATE 44
ISOPACH MAP OF THE
OTTER COAL BED