

EXPLANATION

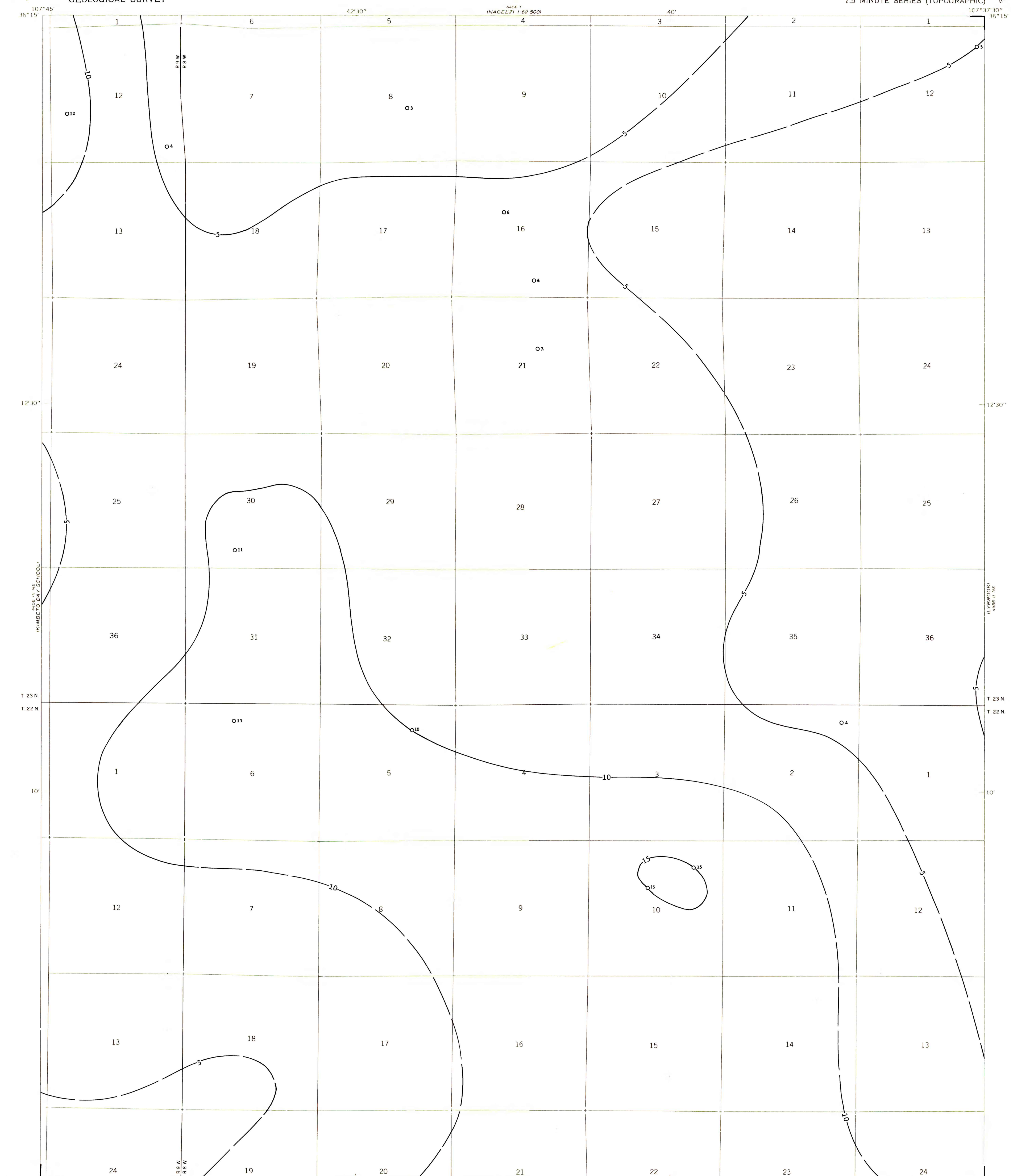
— 10 —

ISOPACHS OF THE FRUITLAND 1 COAL BED - Showing thickness, in feet. Isopach interval 5 feet (1.5 meters). Isopachs dashed where inferred.

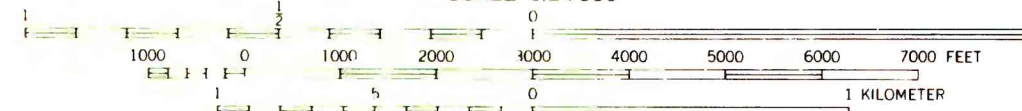
O4  
DRILL HOLE - Showing thickness of Fruitland 1 coal bed, in feet.

To convert feet to meters, multiply feet by 0.3048.

Fruitland coal beds isopached as a single bed on this map are equivalent in stratigraphic position but may not be continuous.



(FIRE ROCK WELL)  
445617 NE  
SCALE 1:24,000



CONTOUR INTERVAL 20 FEET  
DATUM IS MEAN SEA LEVEL



COAL RESOURCE OCCURRENCE MAP OF THE LYBROOK NW QUADRANGLE,  
SAN JUAN COUNTY, NEW MEXICO

BY  
DAMES & MOORE  
1979

This map was prepared under contract to the U.S. Geological Survey and has not been edited for conformity with Geological Survey editorial standards. Opinions and conclusions expressed herein do not necessarily represent those of the Geological Survey.

PLATE 4  
ISOPACH MAP OF THE  
FRUITLAND 1 COAL BED