

EXPLANATION

— 5600 —  
- - - 5640 - - -

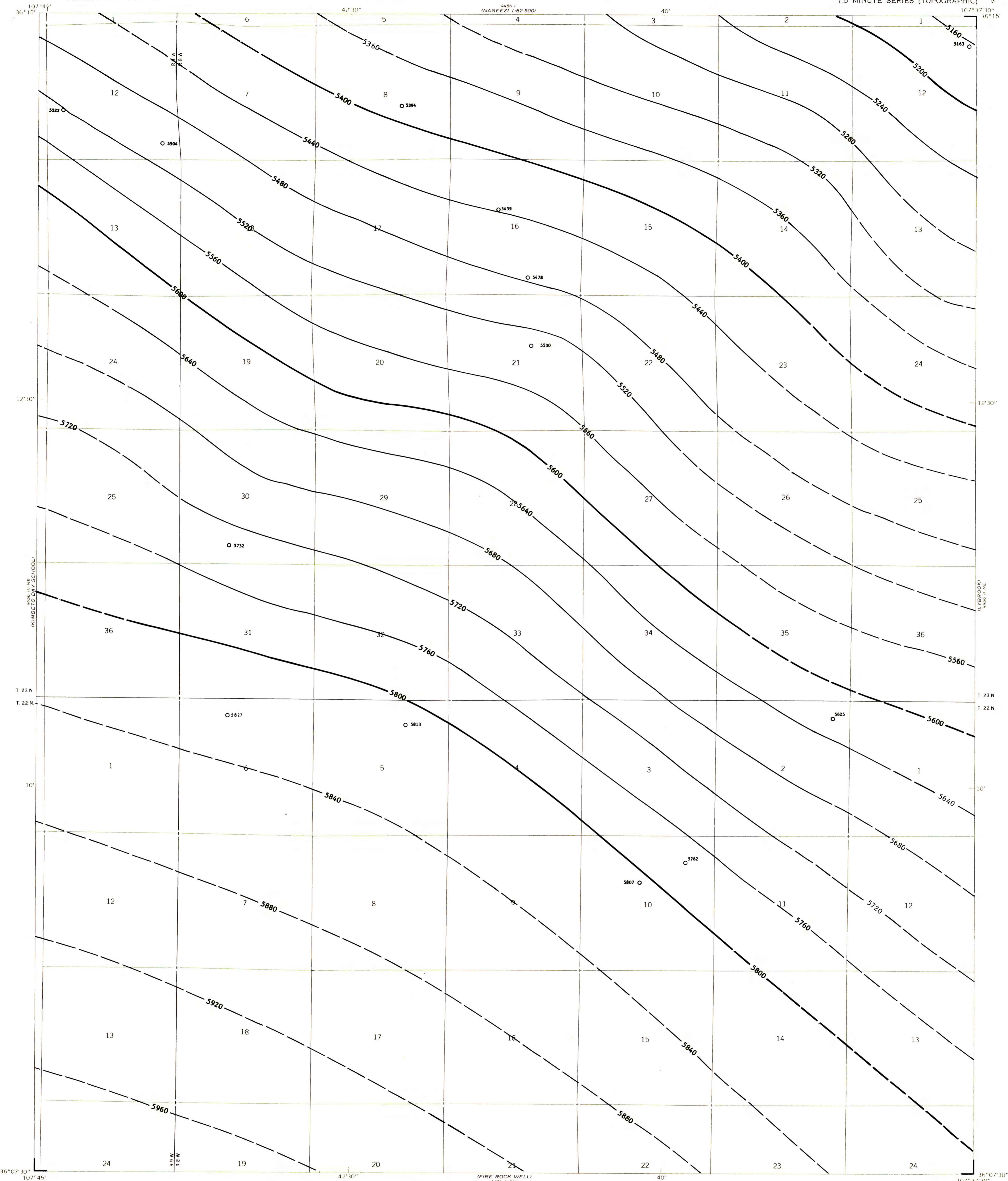
STRUCTURE CONTOURS - Drawn on top of the Fruitland I coal bed. Contour interval 40 feet (12.2 meters). Datum is mean sea level. Contours dashed where inferred.

○ 5807

DRILL HOLE - Showing altitude at the top of the Fruitland I coal bed, in feet.

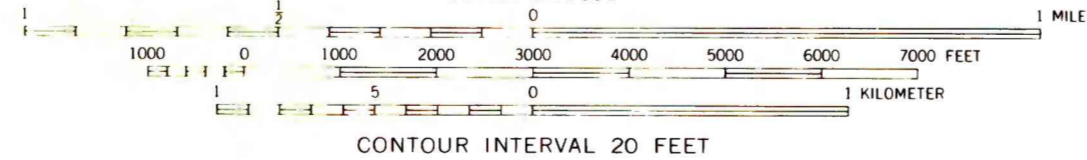
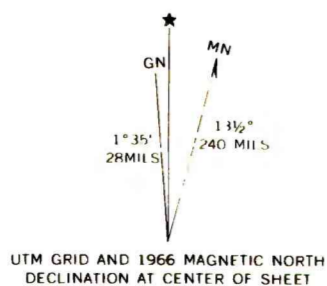
To convert feet to meters, multiply feet by 0.3048.

Fruitland coal beds contoured as a single surface on this map are equivalent in stratigraphic position but may not be continuous.



Base from U.S. Geological Survey, 1966

Compiled in 1979



**COAL RESOURCE OCCURRENCE MAP OF THE LYBROOK NW QUADRANGLE,  
SAN JUAN COUNTY, NEW MEXICO**

**BY  
DAMES & MOORE  
1979**

**PLATE 5  
STRUCTURE CONTOUR MAP OF THE  
FRUITLAND I COAL BED**

This map was prepared under contract to the U.S. Geological Survey and has not been edited for conformity with Geological Survey editorial standards. Opinions and conclusions expressed herein do not necessarily represent those of the Geological Survey.