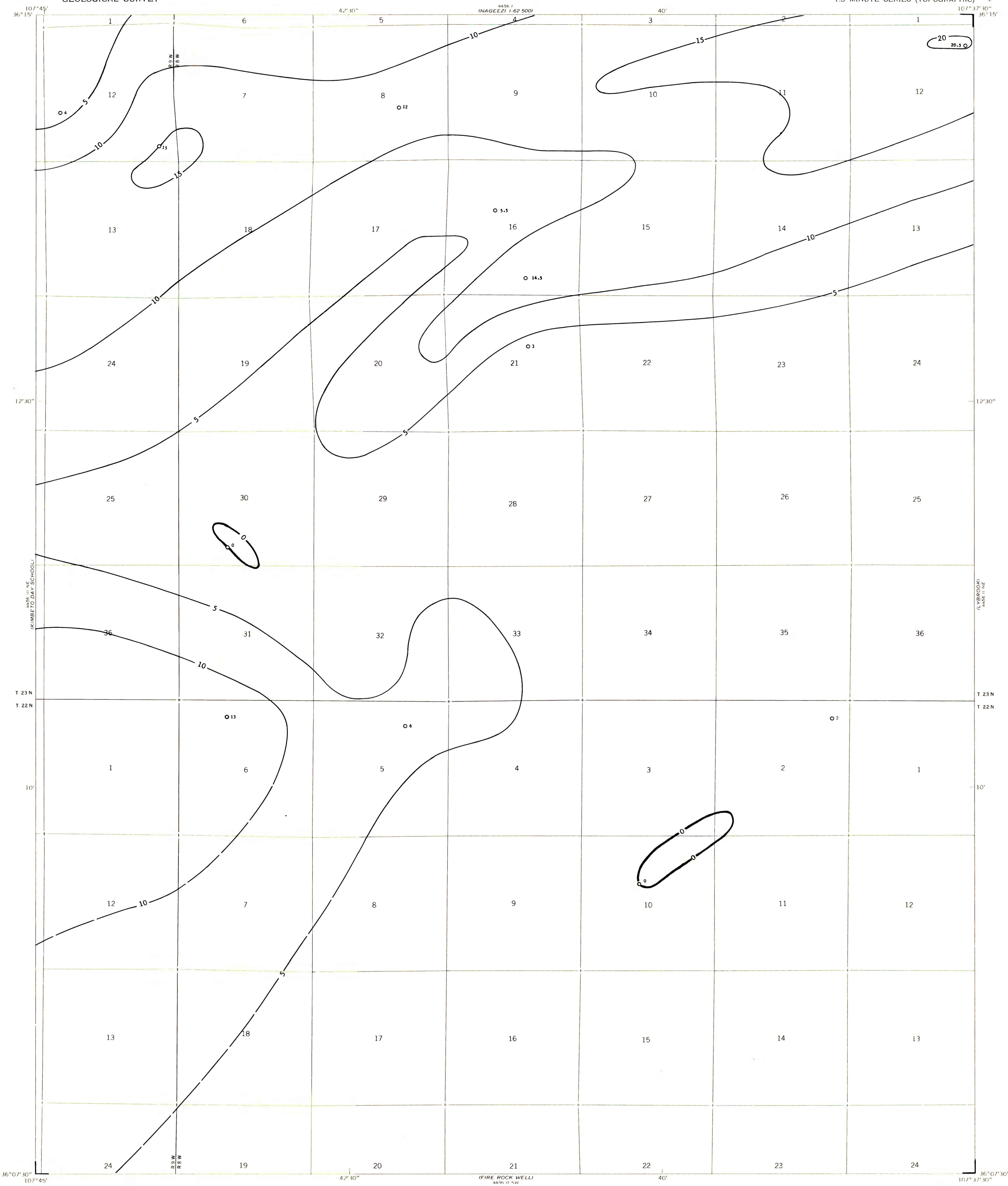


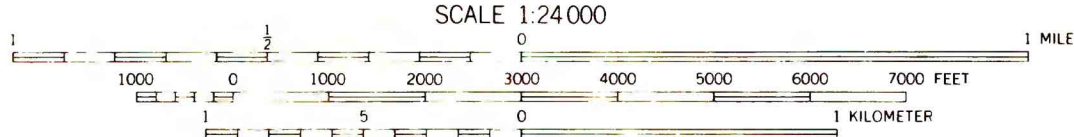
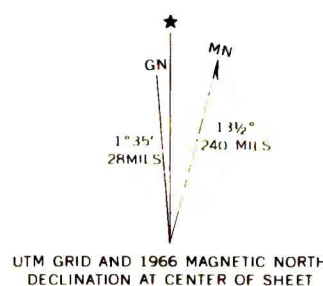
EXPLANATION

- 0 —
- 5 —
- ISOPACHS OF THE FRUITLAND ZONE COAL BEDS -
Showing total thickness, in feet. Isopach
interval 5 feet (1.5 meters). Isopachs
dashed where inferred.
- 2
- DRILL HOLE - Showing total thickness of
Fruitland zone coal beds, in feet.
- To convert feet to meters multiply feet by
0.3048.



Base from U.S. Geological Survey, 1966

Compiled in 1979



CONTOUR INTERVAL 20 FEET
DATUM IS MEAN SEA LEVEL



**COAL RESOURCE OCCURRENCE MAP OF THE LYBROOK NW QUADRANGLE,
SAN JUAN COUNTY, NEW MEXICO**

**BY
DAMES & MOORE
1979**

**PLATE 8
ISOPACH MAP OF THE TOTAL COAL
OF THE FRUITLAND COAL ZONE**

This map was prepared under contract to the U.S. Geological Survey and has not been edited for conformity with Geological Survey editorial standards. Opinions and conclusions expressed herein do not necessarily represent those of the Geological Survey.