

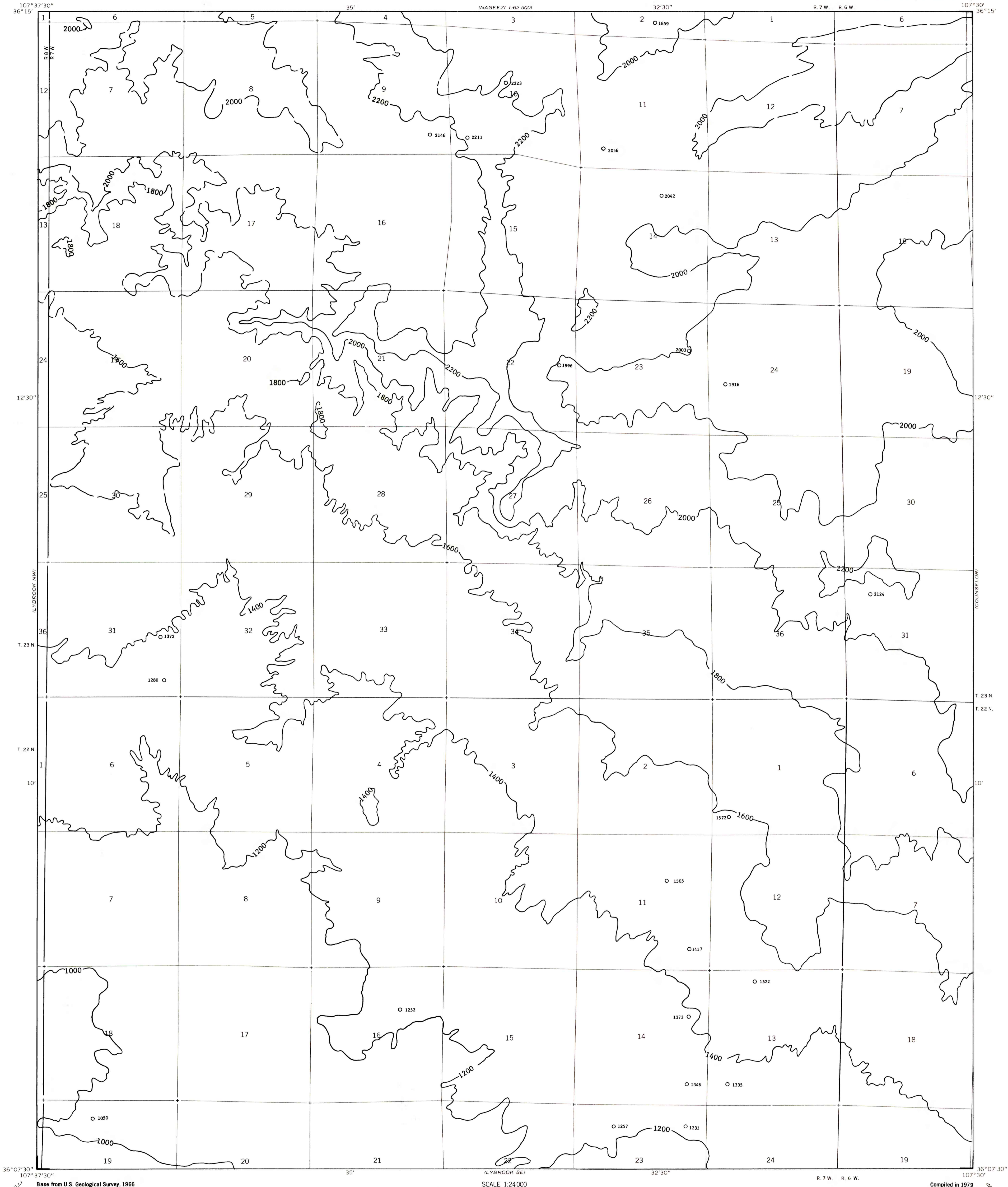
EXPLANATION

1600  
OVERBURDEN ISOPACHS - Showing thickness of overburden, in feet, from the surface to the top of the Fruitland 1 coal bed. Isopach interval 200 feet (61 meters). Isopachs long dashed where inferred, short dashed where projected through noncoal-bearing areas.

○ 1505

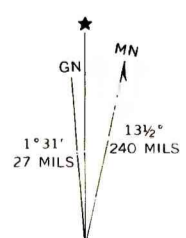
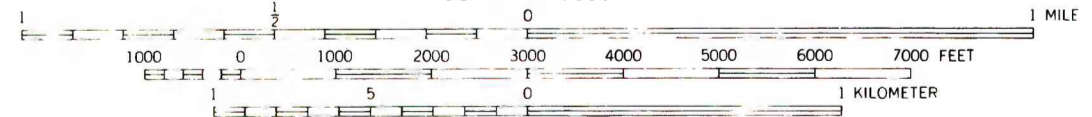
DRILL HOLE - Showing thickness of overburden, in feet, from the surface to the top of the Fruitland 1 coal bed.

To convert feet to meters, multiply feet by 0.3048.



**COAL RESOURCE OCCURRENCE MAP OF THE LYBROOK QUADRANGLE,  
SANDOVAL, RIO ARRIBA, AND SAN JUAN COUNTIES, NEW MEXICO**  
BY  
**DAMES & MOORE**  
1979

This map was prepared under contract to the U.S. Geological Survey and has not been edited for conformity with Geological Survey editorial standards. Opinions and conclusions expressed herein do not necessarily represent those of the Geological Survey.



Base from U.S. Geological Survey, 1966

Compiled in 1979