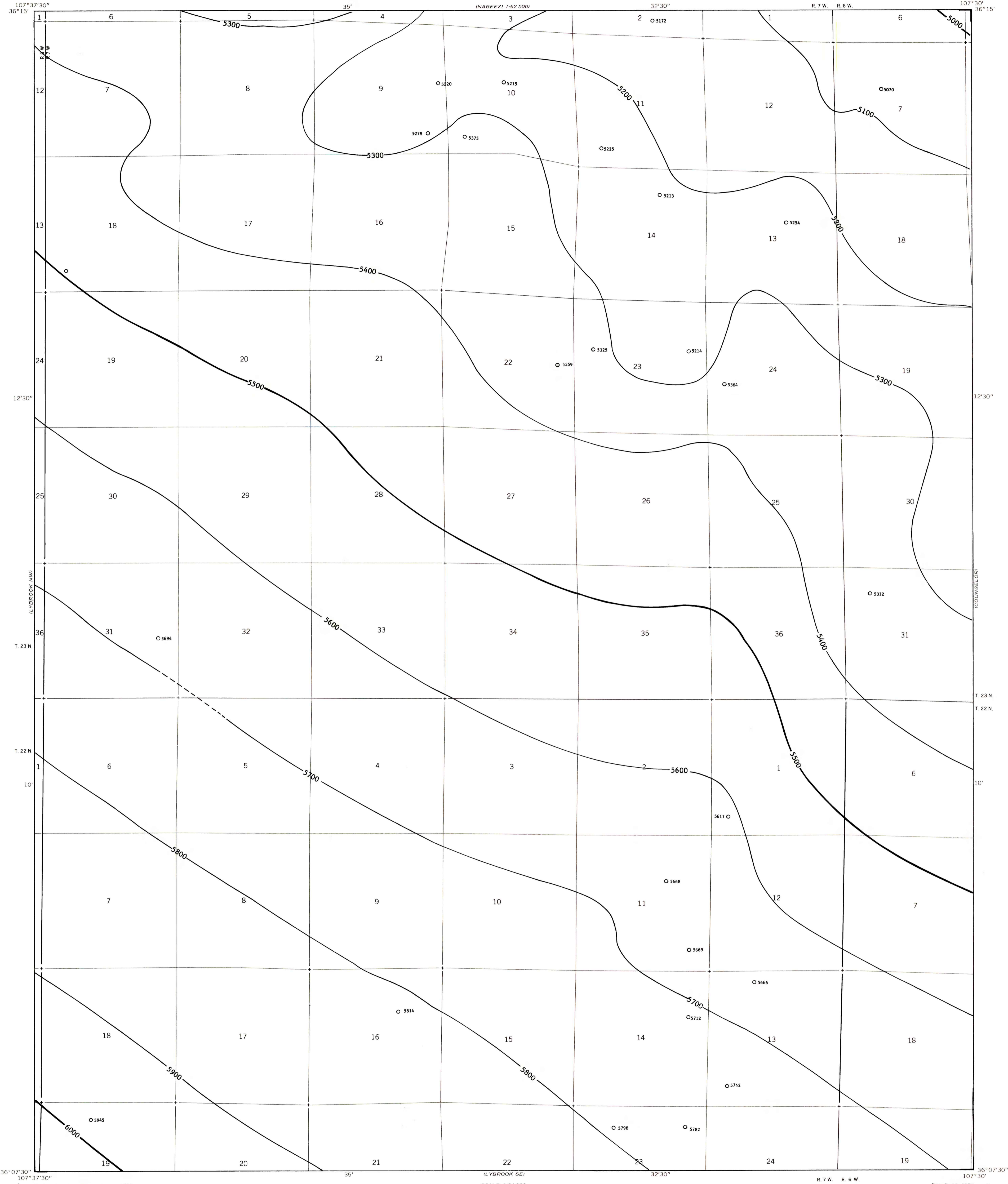


EXPLANATION

- 5500 —
- 5600 —
- STRUCTURE CONTOURS - Drawn on top of the Fruitland coal zone, which is coincident with the top of the Fruitland Formation. Contour interval 100 feet (30.5 meters). Datum is mean sea level. Contours dashed where projected through noncoal-bearing areas.
- 5668
- DRILL HOLE - Showing altitude at top of Fruitland coal zone, in feet.
- To convert feet to meters, multiply feet by 0.3048.



**COAL RESOURCE OCCURRENCE MAP OF THE LYBROOK QUADRANGLE,
SANDOVAL, RIO ARRIBA, AND SAN JUAN COUNTIES, NEW MEXICO**
BY
DAMES & MOORE
1979

This map was prepared under contract to the U.S. Geological Survey and has not been edited for conformity with Geological Survey editorial standards. Opinions and conclusions expressed herein do not necessarily represent those of the Geological Survey.