

EXPLANATION

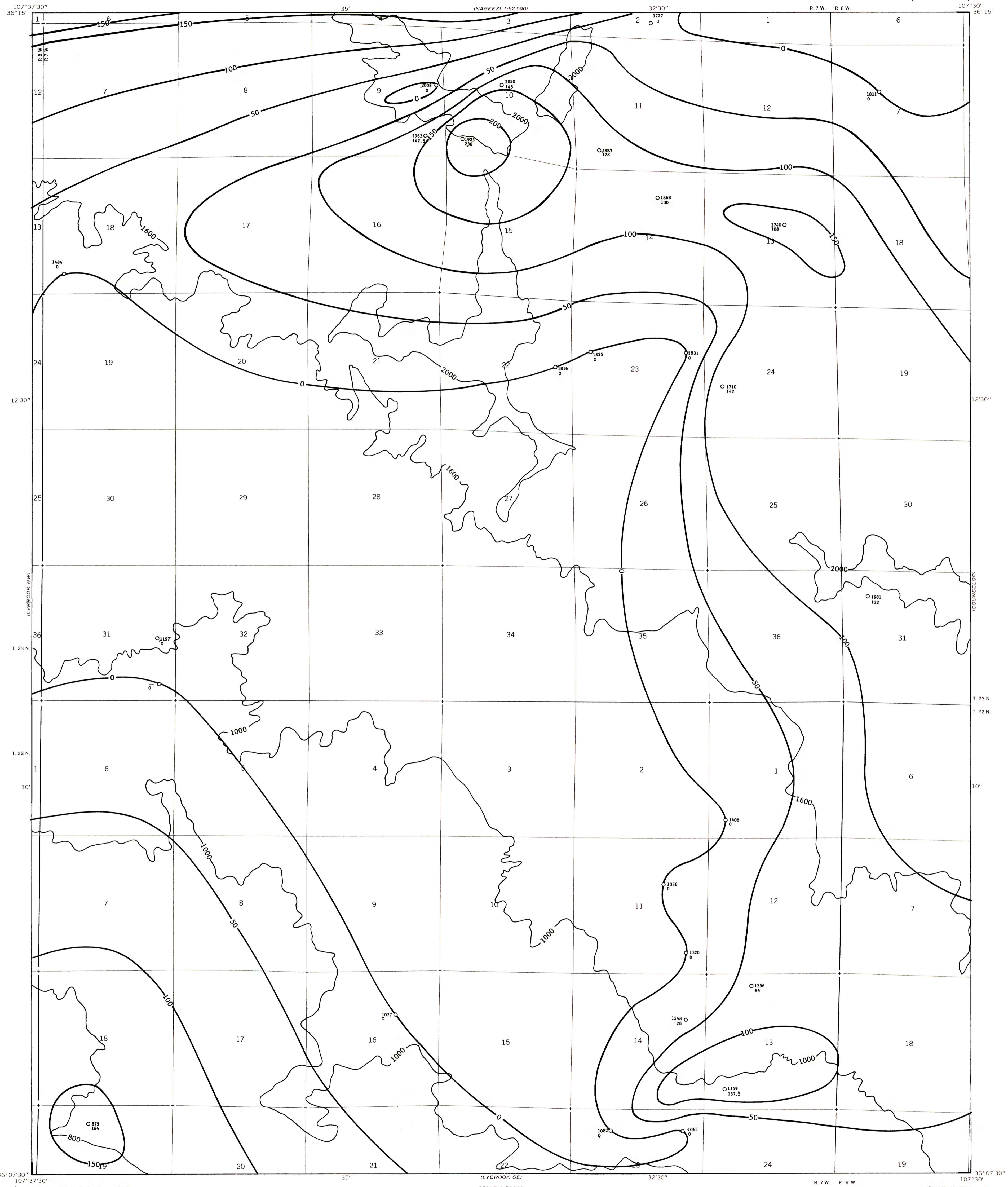
2000
OVERBURDEN ISOPACHS - Showing thickness of overburden, in feet, from the surface to the top of the Fruitland coal zone, which is coincident with the top of the Fruitland Formation. Isopach interval 400 feet (122 meters). Supplemental 1000-foot (305-meter) overburden isopach added.

200
INTERBURDEN ISOPACHS - Showing thickness of interburden, in feet, within the Fruitland coal zone. Isopach interval 50 feet (15.2 meters).

1336
163
DRILL HOLE - Showing thickness of overburden, in feet, (upper number) from the surface to the top of the Fruitland coal zone and thickness of interburden, in feet, (lower number) within the Fruitland coal zone. Dash indicates unknown value.

To convert feet to meters multiply feet by 0.3048.

The Fruitland coal zone extends from the top of the Fruitland Fm to the base of the lowermost coal which is designated, on CRO Plate 3, as a Fruitland zone coal bed. The Fruitland zone overburden is determined by subtracting the elevation of the top of the Fruitland Fm (CRO Plate 9) from the ground level elevation. The interburden is the total rock thickness from the top of the Fruitland Fm to the top of the lowermost coal which is designated as a Fruitland zone coal bed.



**COAL RESOURCE OCCURRENCE MAP OF THE LYBROOK QUADRANGLE,
SANDOVAL, RIO ARRIBA, AND SAN JUAN COUNTIES, NEW MEXICO**
BY
DAMES & MOORE
1979

This map was prepared under contract to the U.S. Geological Survey and has not been edited for conformity with Geological Survey editorial standards. Opinions and conclusions expressed herein do not necessarily represent those of the Geological Survey.

PLATE 10
ISOPACH MAP OF OVERBURDEN AND INTERBURDEN OF THE FRUITLAND COAL ZONE