

EXPLANATION

100  
OVERBURDEN ISOPACHS - Showing thickness of overburden, in feet, from surface to top of coal bed. Dashed where vertical accuracy possibly not within 40 feet. Isopach interval 100 feet (30.48 m).

○ 223  
DRILL HOLE - Showing thickness of overburden, in feet, from surface to top of coal bed.

10  
MINING-RATIO CONTOUR - Number indicates cubic yards of overburden per ton of recoverable coal by surface mining methods. Contours shown only in areas underlain by coal of Reserve Base thickness within the stripping-limit (in this quadrangle, the 200-foot-overburden isopach).

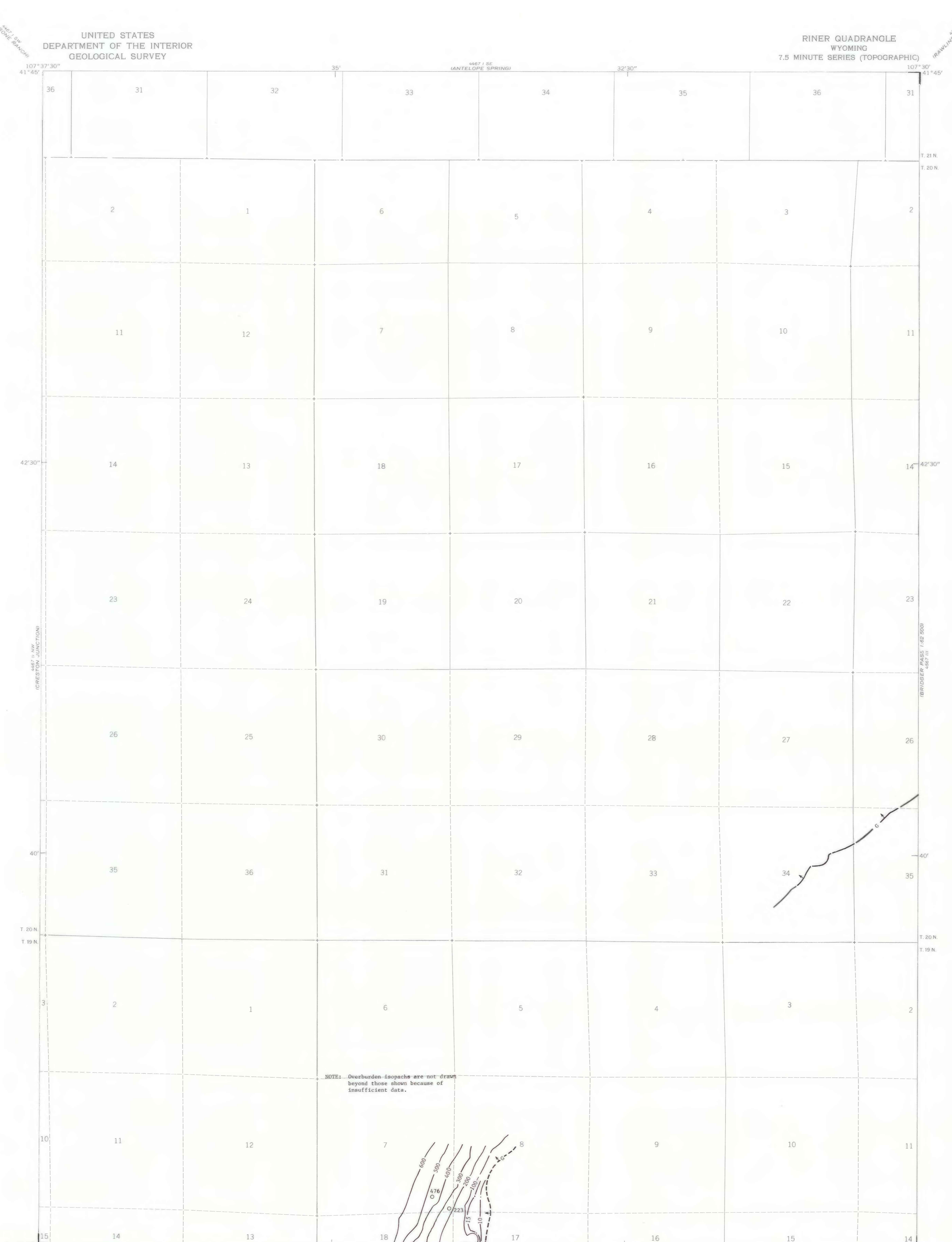
C - C (Daleys Ranch) of Lower Fort Union Coal Zone

COAL BED SYMBOL AND NAME

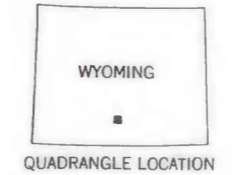
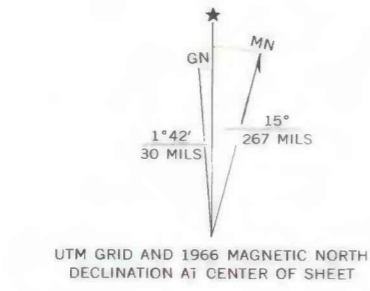
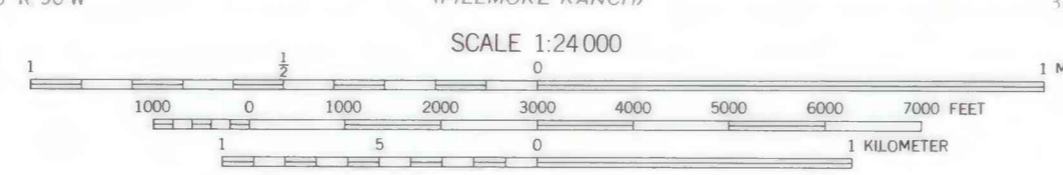
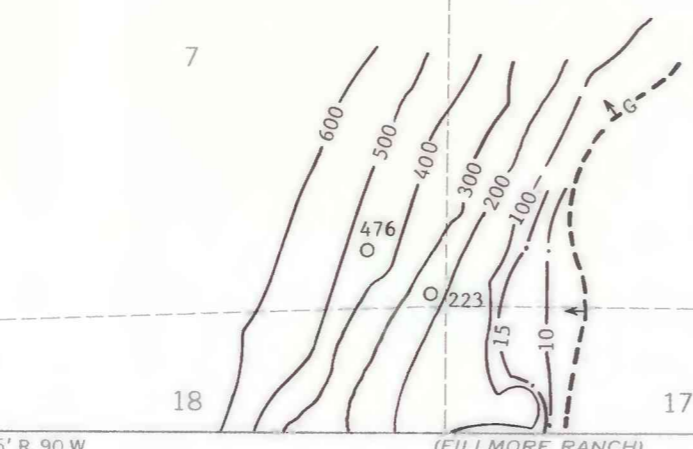
↑ C  
TRACE OF COAL BED OUTCROP - Showing symbol of name of coal bed. Arrow points toward coal-bearing area. Dashed where inferred; short dashed where inferred by present authors.

To convert feet to meters, multiply feet by 0.3048.

To convert mining ratio to cubic meters of overburden per metric ton of recoverable coal, multiply mining ratio by 0.8428.



NOTE: Overburden isopachs are not drawn beyond those shown because of insufficient data.



**COAL RESOURCE OCCURRENCE MAP OF THE RINER QUADRANGLE,  
SWEETWATER AND CARBON COUNTIES, WYOMING**  
BY  
**DAMES & MOORE**  
1979

This report has not been edited for conformity with U.S. Geological Survey editorial standards or stratigraphic nomenclature.