

EXPLANATION

6500
7200

STRUCTURE CONTOURS - Drawn on top of coal bed. Solid where vertical accuracy within 40 feet; long dashed where vertical accuracy possibly not within 40 feet; short dashed where projected above ground surface. Contour interval is 80 feet (24.4 m) for the C (Lower Cherokee) coal bed and 100 feet (30.3 m) for the F2 (Red Rim) coal bed. Datum is mean sea level.

○ 6698
DRILL HOLE - Showing altitude of top of coal bed, in feet.

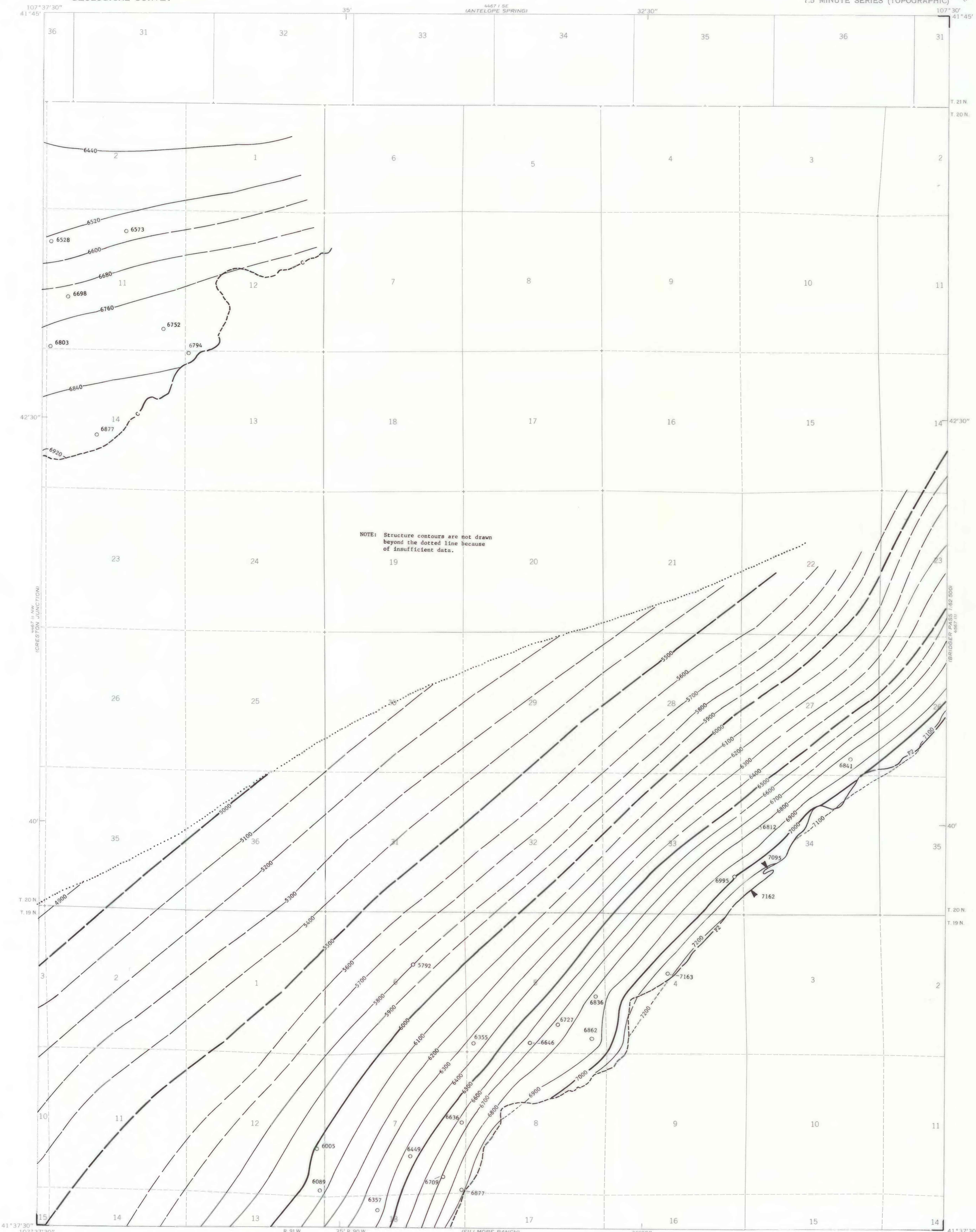
▲ 7162
POINT OF MEASUREMENT - Showing altitude of top of coal bed, in feet.

C - C (Lower Cherokee) of Upper Fort Union Coal Zone
F2 - F2 (Red Rim) of Lower Fort Union Coal Zone

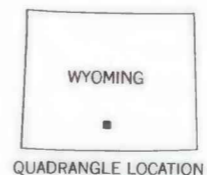
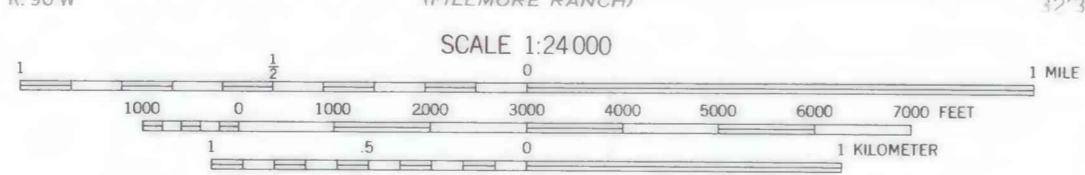
COAL BED SYMBOLS AND NAMES

— F2 —
TRACE OF COAL BED OUTCROP - Showing symbol of name of coal bed as listed above. Dashed where inferred; short dashed where inferred by present authors.

To convert feet to meters, multiply feet by 0.3048.



NOTE: Structure contours are not drawn beyond the dotted line because of insufficient data.



**COAL RESOURCE OCCURRENCE MAP OF THE RINER QUADRANGLE,
SWEETWATER AND CARBON COUNTIES, WYOMING**
BY
DAMES & MOORE
1979

This report has not been edited for conformity with U.S. Geological Survey editorial standards or stratigraphic nomenclature.