

EXPLANATION

400
OVERBURDEN ISOPACHS - Showing thickness of overburden, in feet, from the surface to the top of the coal bed. Dashed where vertical accuracy possibly not within 40 feet. Isopach interval is 50 feet (15.24 m) over strippable coal and 200 feet (60.96 m) beyond the stripping-limit line.

○ 251
DRILL HOLE - Showing thickness of overburden, in feet, from the surface to the top of the coal bed.

10
MINING-RATIO CONTOUR - Number indicates cubic yards of overburden per ton of recoverable coal by surface mining methods. Contours shown only in areas underlain by coal of Reserve Base thickness within the stripping-limit (in this quadrangle, the 200-foot-overburden isopach).

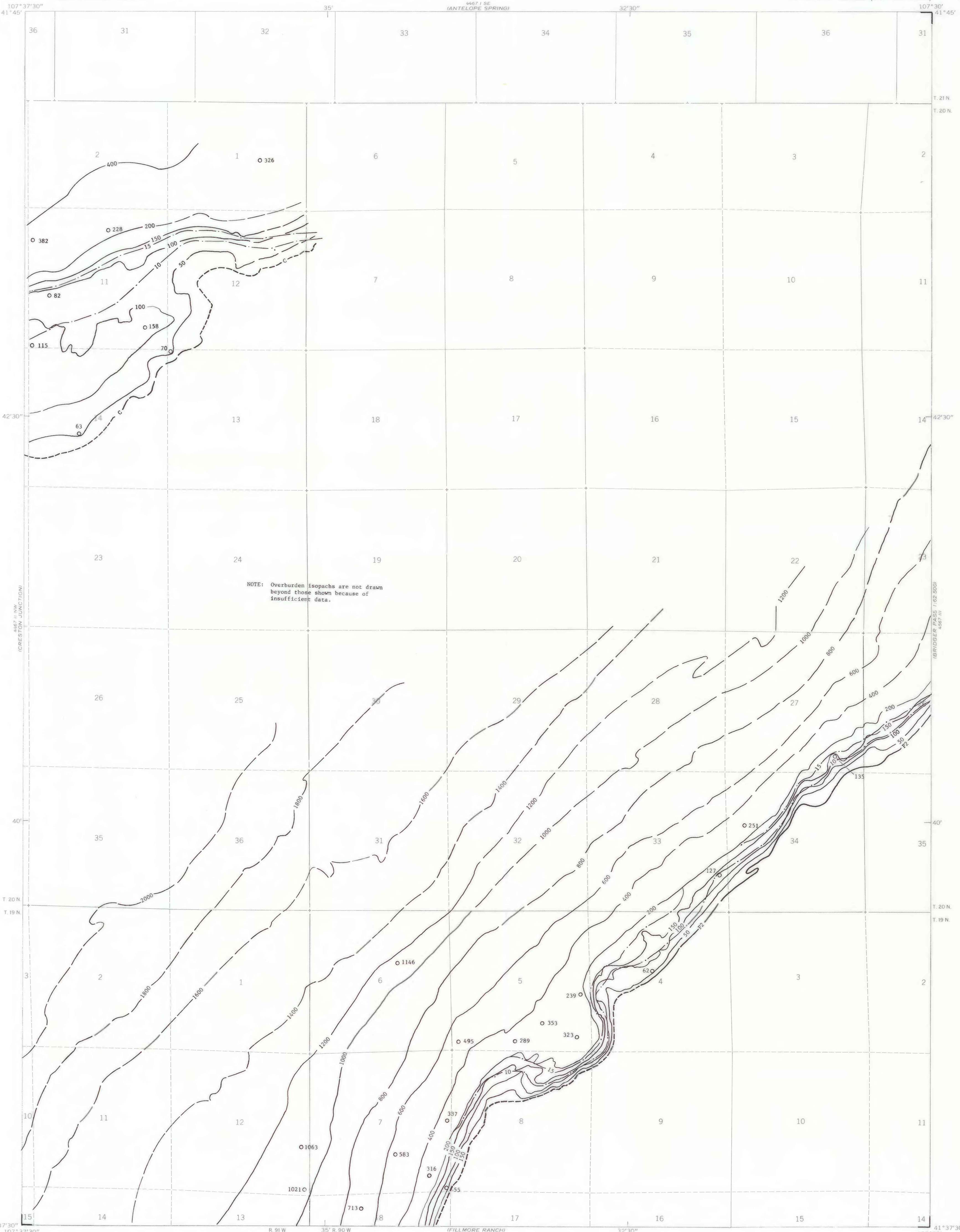
C - C (Lower Cherokee) of Upper Fort Union Coal Zone
F2 - F2 (Red Rim) of Upper Fort Union Coal Zone

COAL BED SYMBOLS AND NAMES

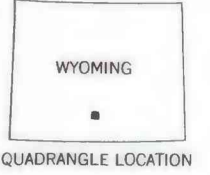
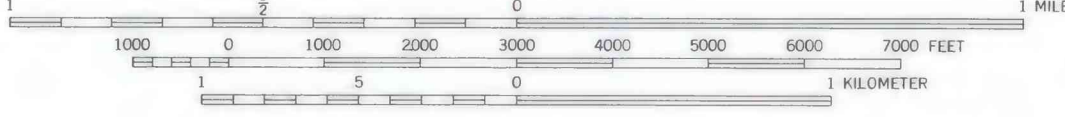
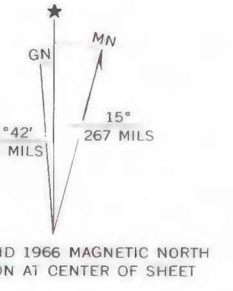
F2
TRACE OF COAL BED OUTCROP - Showing symbol of name of coal bed as listed above. Dashed where inferred; short dashed where inferred by present authors.

To convert feet to meters, multiply feet by 0.3048.

To convert mining ratio to cubic meters of overburden per metric ton of recoverable coal, multiply mining ratio by 0.8428.



NOTE: Overburden isopachs are not drawn beyond those shown because of insufficient data.



**COAL RESOURCE OCCURRENCE MAP OF THE RINER QUADRANGLE,
SWEETWATER AND CARBON COUNTIES, WYOMING**
BY
DAMES & MOORE
1979

This report has not been edited for conformity with U.S. Geological Survey editorial standards or stratigraphic nomenclature.