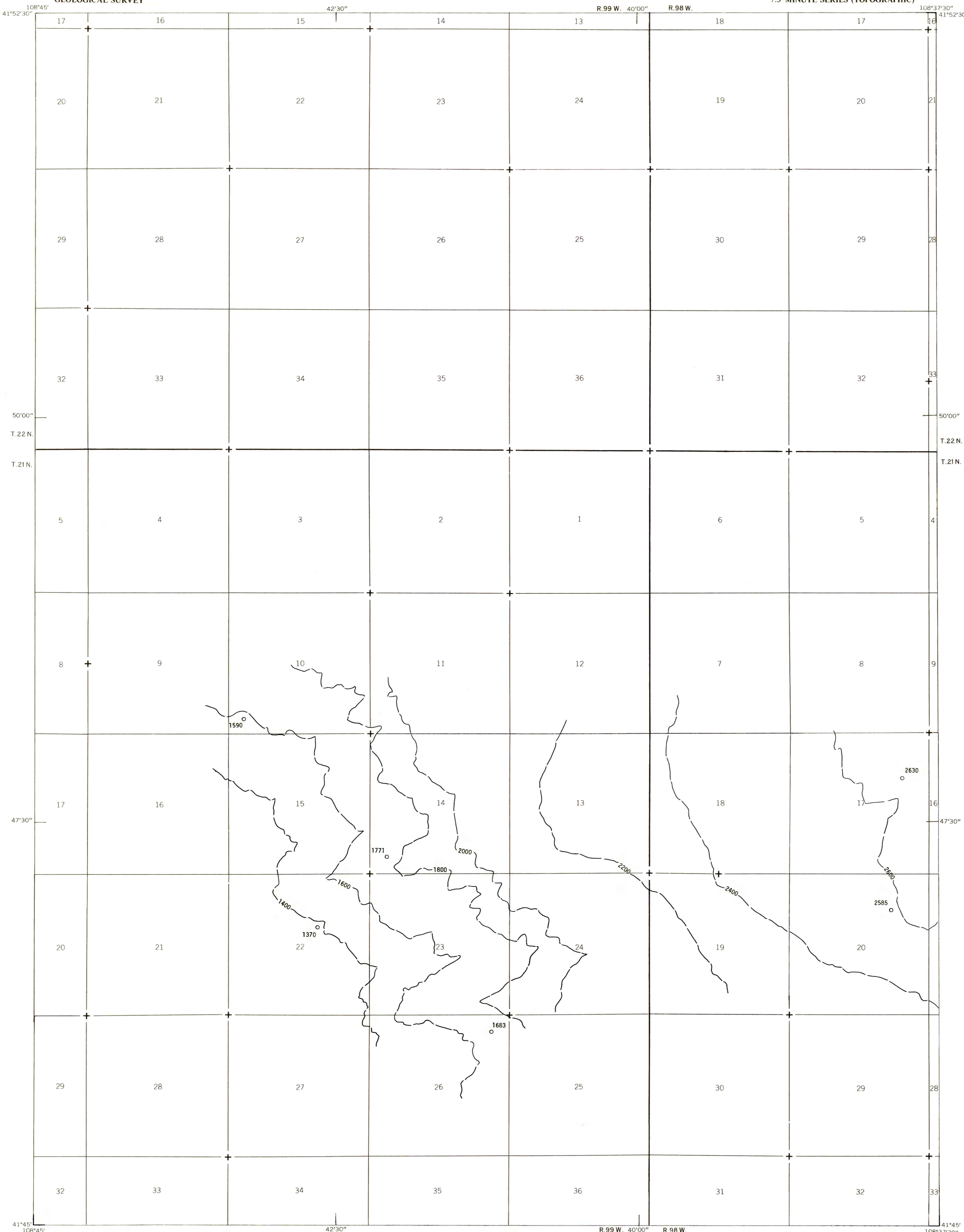


UNITED STATES
DEPARTMENT OF THE INTERIOR
GEOLOGICAL SURVEY

SOUTHWEST TWELVEMILE WELL QUADRANGLE
WYOMING-SWEETWATER CO.
7.5 MINUTE SERIES (TOPOGRAPHIC)

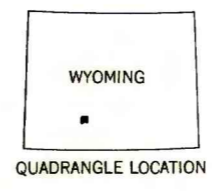
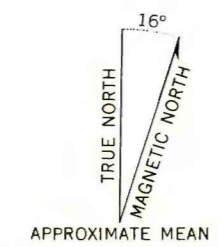
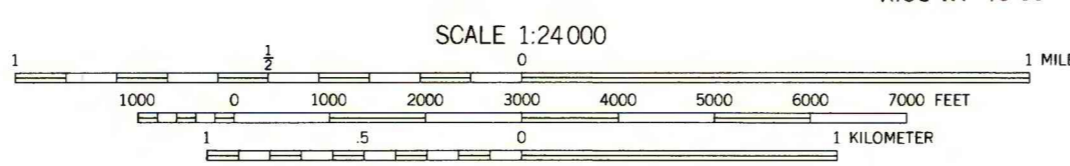
EXPLANATION

————— 2000 —————
OVERBURDEN ISOPACHS - Showing thickness of overburden, in feet, from surface to top of coal bed. Dashed where vertical accuracy possibly not within 40 feet. Isopach interval 200 feet (61 m).
○ 1771
DRILL HOLE - Showing thickness of overburden, in feet, from surface to top of coal bed.
To convert feet to meters, multiply feet by 0.3048.



Base from U.S. Geological Survey, 1958

Compiled in 1977/1978



This report has not been edited for conformity with U.S. Geological Survey editorial standards or stratigraphic nomenclature.

COAL RESOURCE OCCURRENCE MAP OF THE SOUTHWEST QUARTER OF THE TWELVEMILE WELL 15-MINUTE QUADRANGLE, SWEETWATER COUNTY, WYOMING

**BY
DAMES & MOORE
1979**