

UNITED STATES  
DEPARTMENT OF THE INTERIOR  
GEOLOGICAL SURVEY

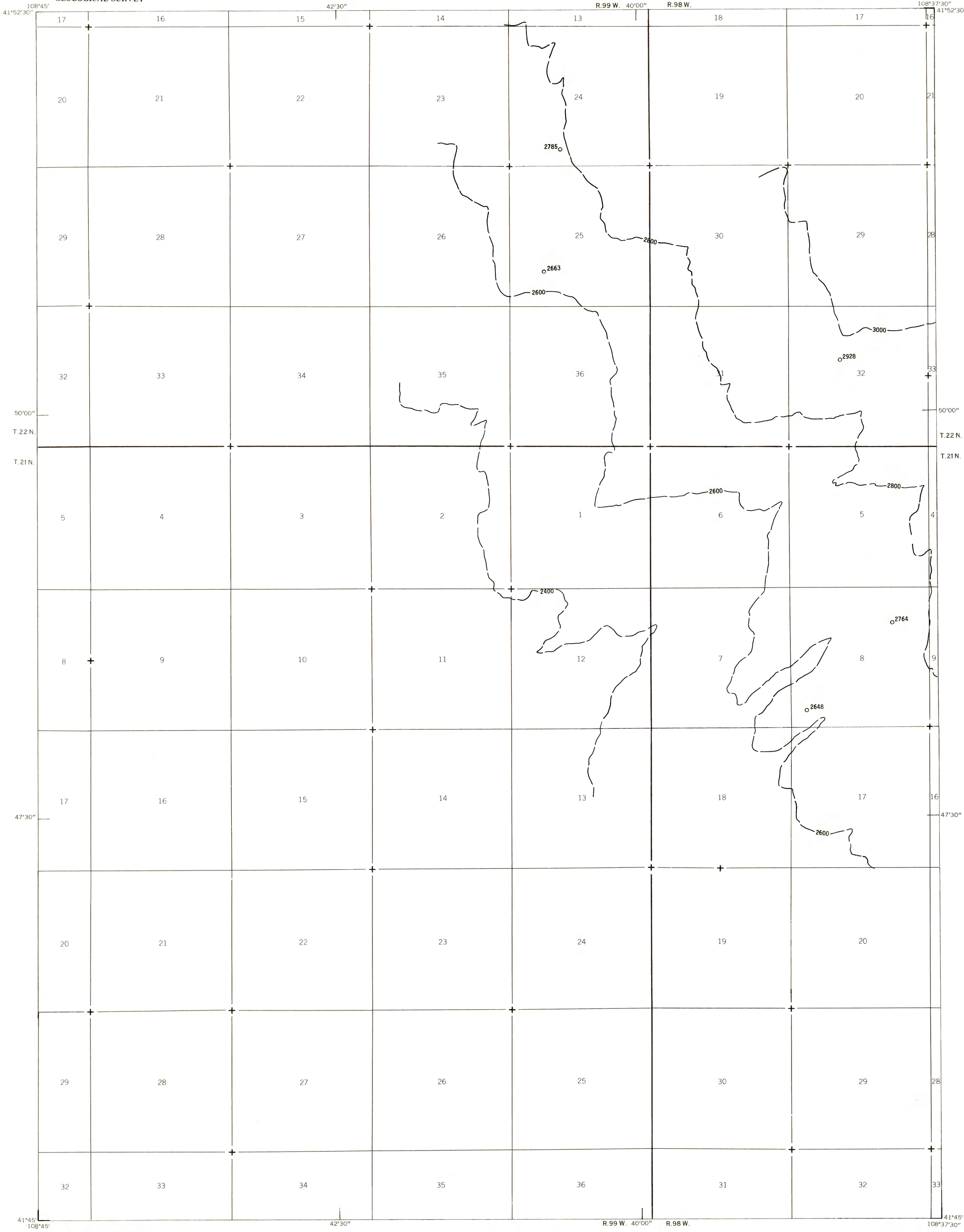
SOUTHWEST TWELVEMILE WELL QUADRANGLE  
WYOMING-SWEETWATER CO.  
7.5 MINUTE SERIES (TOPOGRAPHIC)

EXPLANATION

— 2600 —  
OVERBURDEN ISOPACHS - Showing thickness of overburden, in feet, from surface to top of coal bed. Dashed where vertical accuracy possibly not within 40 feet. Isopach interval 200 feet (61 m).

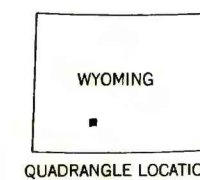
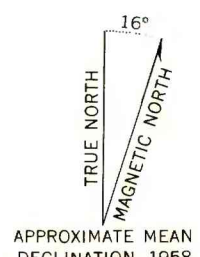
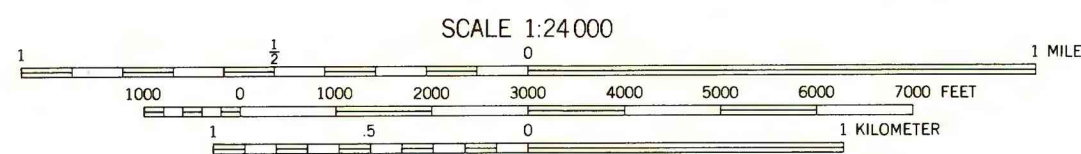
○ 2928  
DRILL HOLE - Showing thickness of overburden, in feet, from surface to top of coal bed.

To convert feet to meters, multiply feet by 0.3048.



Base from U.S. Geological Survey, 1958

Compiled in 1977/1978



# COAL RESOURCE OCCURRENCE MAP OF THE SOUTHWEST QUARTER OF THE TWELVEMILE WELL 15-MINUTE QUADRANGLE, SWEETWATER COUNTY, WYOMING

BY  
DAMES & MOORE  
1979

This report has not been edited for conformity with U.S. Geological Survey editorial standards or stratigraphic nomenclature.