

UNITED STATES
DEPARTMENT OF THE INTERIOR
GEOLOGICAL SURVEY

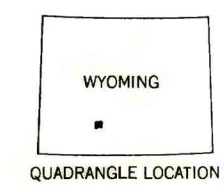
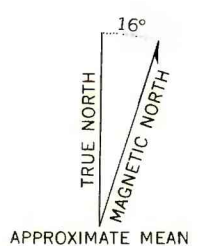
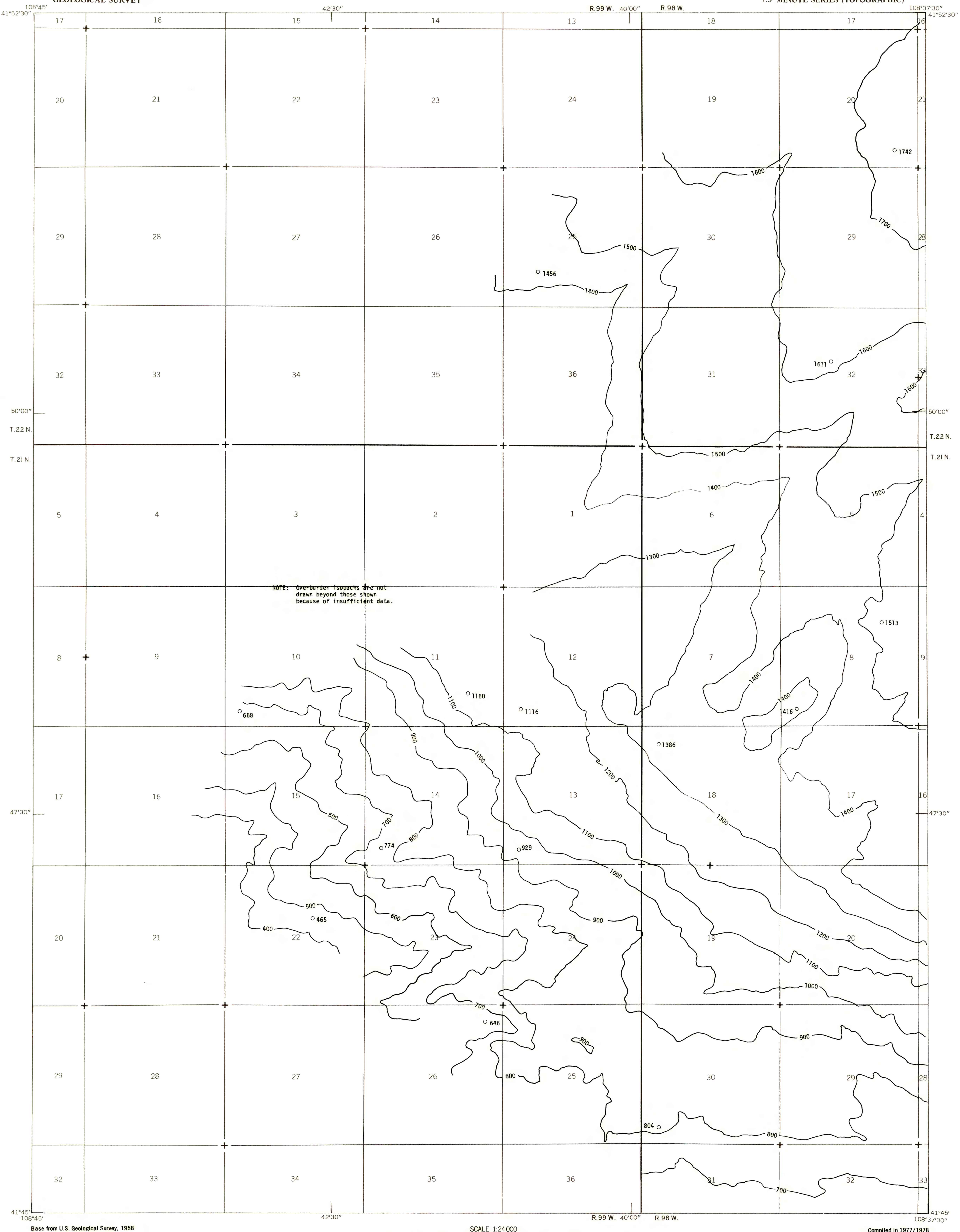
SOUTHWEST TWELVEMILE WELL QUADRANGLE
WYOMING-SWEETWATER CO.
7.5 MINUTE SERIES (TOPOGRAPHIC)

EXPLANATION

1000
OVERBURDEN ISOPACHS - Showing thickness of overburden, in feet, from surface to top of coal bed. Isopach interval is 100 feet (31 m).

○ 1386
DRILL HOLE - Showing thickness of overburden, in feet, from surface to top of coal bed.

To convert feet to meters, multiply feet by 0.3048.



This report has not been edited for conformity with U.S. Geological Survey editorial standards or stratigraphic nomenclature.

COAL RESOURCE OCCURRENCE MAP OF THE SOUTHWEST QUARTER OF THE TWELVEMILE WELL 15-MINUTE QUADRANGLE, SWEETWATER COUNTY, WYOMING

BY
DAMES & MOORE
1979