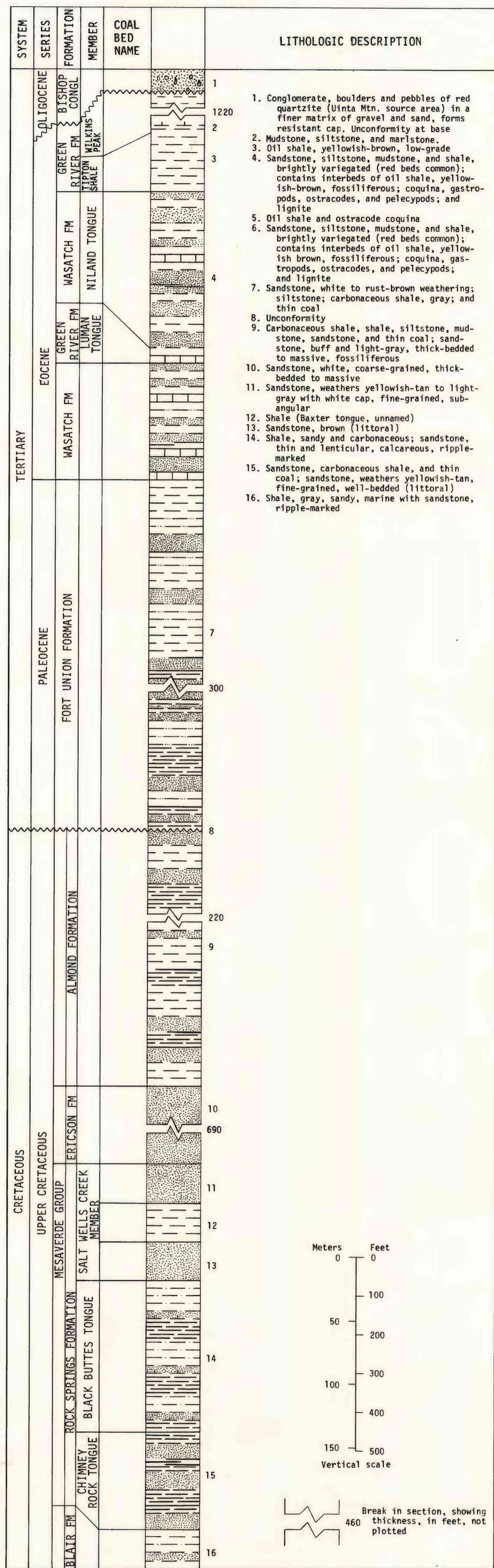
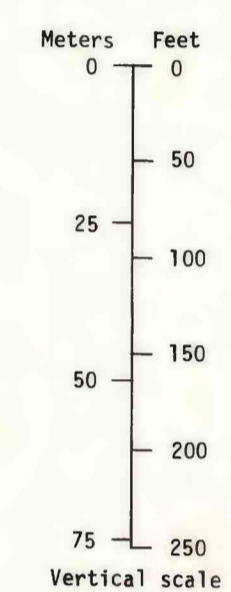
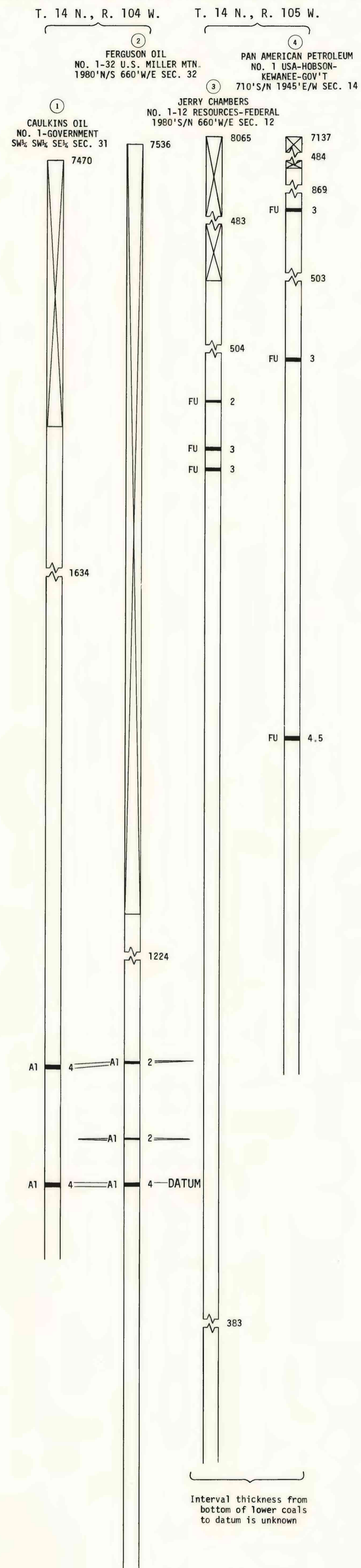


This report has not been edited for conformity with U.S. Geological Survey editorial standards or stratigraphic nomenclature.

COMPOSITE COLUMNAR SECTION



CORRELATION OF COAL BEDS IN DRILL HOLES



EXPLANATION

- Index number
- Well name
- Well location
- Altitude, in feet, of well
- No record of lithology
- Rock interval
- Coal bed showing thickness in feet
- Break in rock interval, showing thickness, in feet, not plotted
- Coal bed symbols and names
- FU - Fort Union, undifferentiated
- A1 - Almond, undifferentiated

REFERENCES

Bradley, W.H., 1961, Geologic map of a part of southwestern Wyoming and adjacent states: U.S. Geol. Survey Misc. Geol. Inv. Map I-332.

Culbertson, W.C., 1965, Tongues of the Green River and Wasatch Formations in the southeastern part of the Green River Basin, Wyoming, in Wyoming Geol. Assoc. Guidebook, 19th Ann. Field Conf., 1965: p. 151-155.

Douglass, W.B., Jr., and Blazard, T.R., 1961, Facies relationships of the Blair, Rock Springs, and Ericson Formations of the Rock Springs uplift and Washakie Basin, in Symposium on Late Cretaceous rocks of Wyoming and adjacent areas, Wyoming Geol. Assoc. Guidebook, 16th Ann. Field Conf., 1961: p. 81-86.

Roehler, H.N., 1977, Geologic map of the Rock Springs uplift and adjacent areas, Sweetwater County, Wyoming: U.S. Geol. Survey Open-File Report 77-242, scale 1:126,720.

COAL RESOURCE OCCURRENCE MAP OF THE MAXON RANCH QUADRANGLE, SWEETWATER COUNTY, WYOMING
BY
DAMES & MOORE
1979