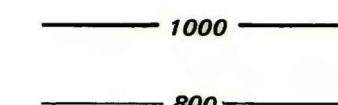
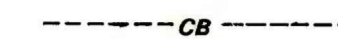


EXPLANATION



OVERBURDEN ISOPACHS - Showing thickness of overburden, in feet, from the surface to top of the Castlegate "B" coal bed. Isopach interval 200 feet (61.0 m).



TRACE OF COAL BED OUTCROP - Showing symbol of name of coal bed. Dashed where inferred by present authors.

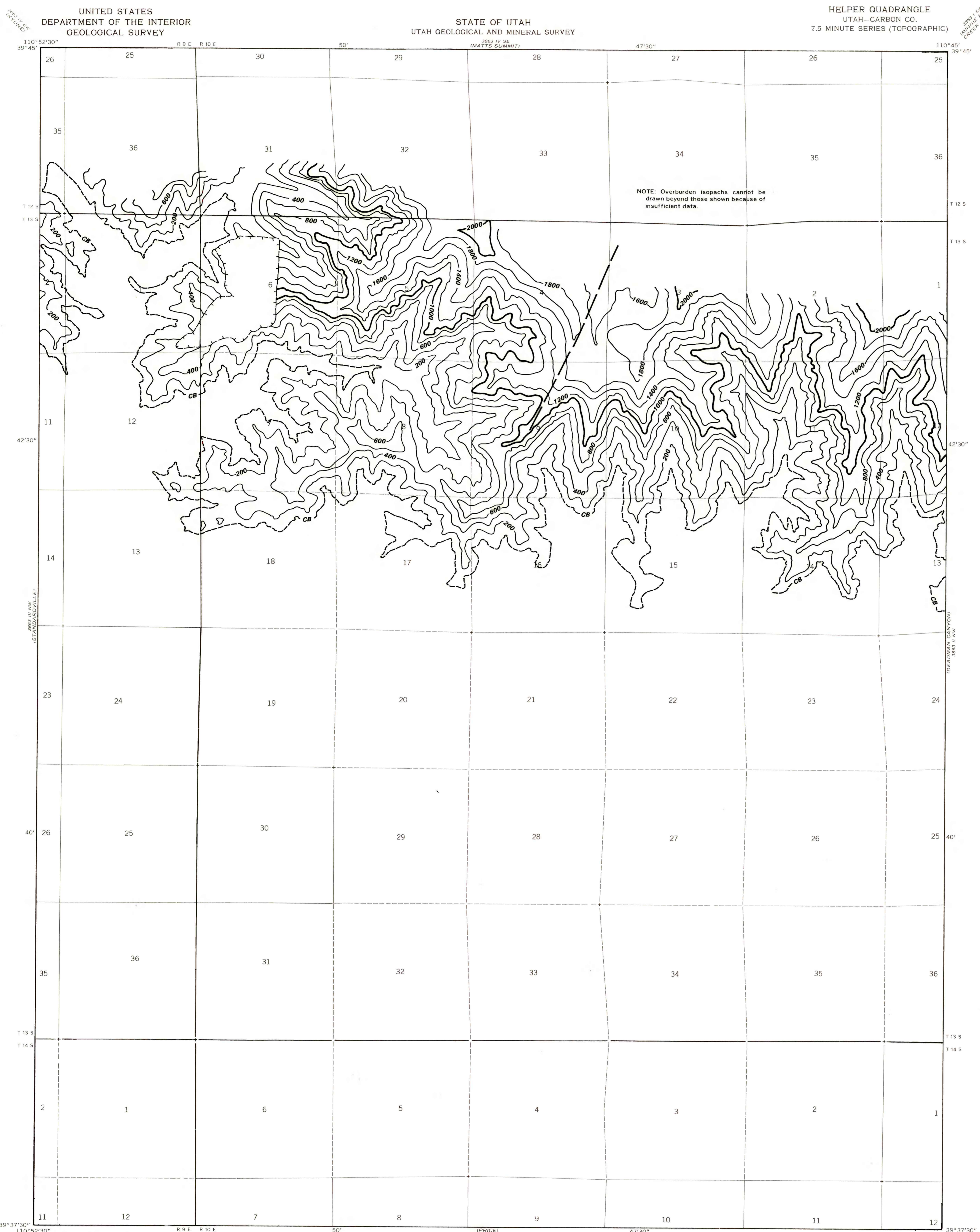


FAULT - Dashed where approximately located.



UNDERGROUND COAL MINE - Hachures point to mined-out area. Dashed where approximately located.

To convert feet to meters, multiply feet by 0.3048



NOTE: Overburden isopachs cannot be drawn beyond those shown because of insufficient data.

