

EXPLANATION

The area covered by this quadrangle is entirely within the KRCSA boundary.

NON-FEDERAL COAL LAND - Land within the KRCSA boundary for which the Federal Government does not own the coal rights.

RB 16.83

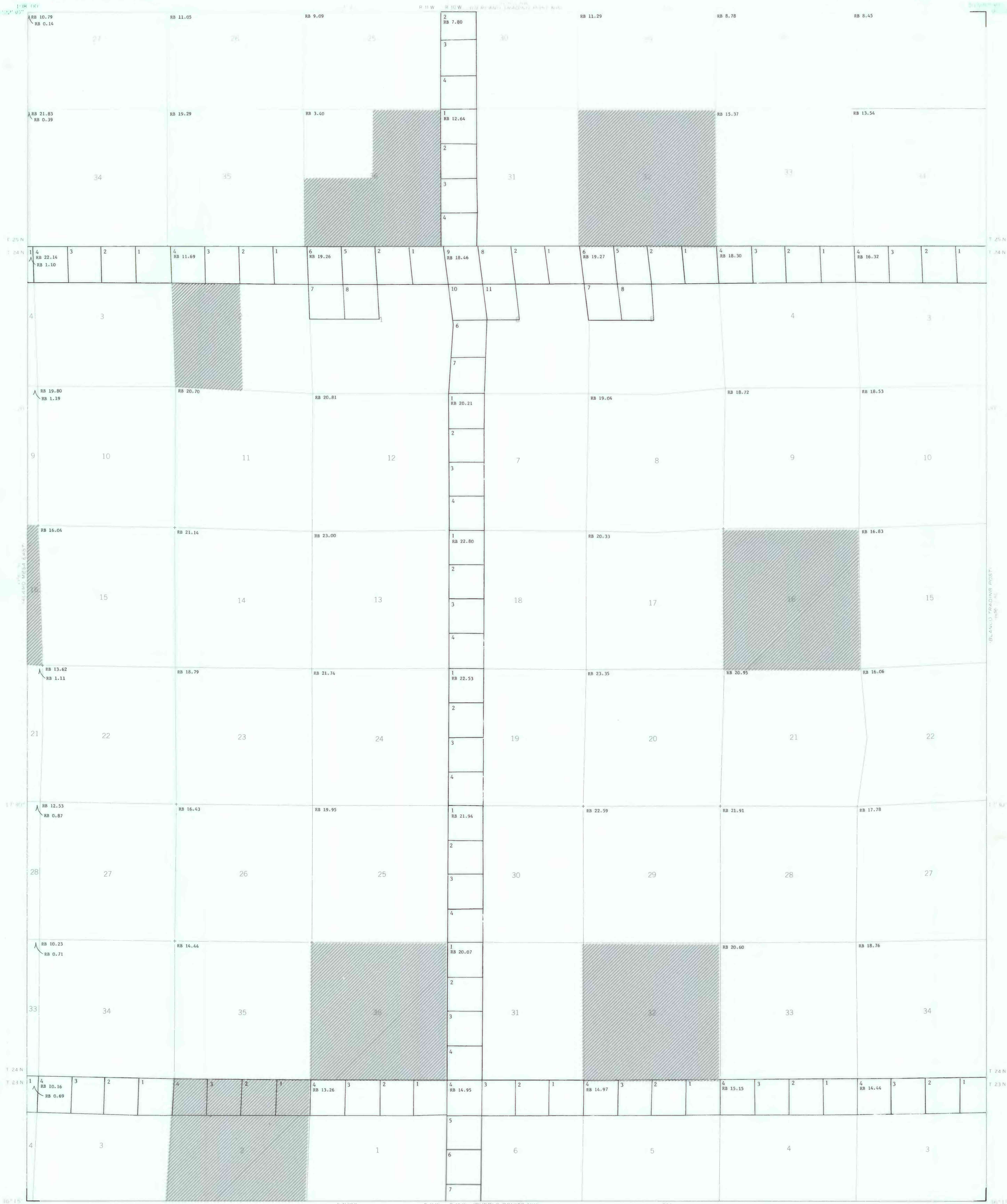
TOTAL RESERVE BASE (RB) OF FEDERAL COAL PER SECTION - In millions of short tons, calculated for each section of Federal land following the guidelines given in U.S. Geological Survey Bulletin 1450-B. To convert short tons to metric tons, multiply short tons by 0.9072.

4	3	2	1
5	6		
6			
7			

SECTION OF LAND - Showing lots and lot numbers.

NOTE: BLM Coal Ownership Data current as of October 15, 1977.

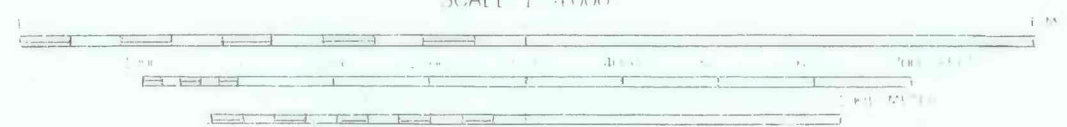
U.S. Bureau of Mines and U.S. Geological Survey, 1976, Coal resource classification system of the U.S. Bureau of Mines and U.S. Geological Survey: U.S. Geological Survey Bulletin 1450-B, 7 p.



Base from U.S. Geological Survey, 1966

Compiled in 1979

UTM GRID AND 1968 MAGNETIC NORTH DECLINATION AT CENTER OF SHEET



COAL RESOURCE OCCURRENCE MAP OF THE HUERFANO TRADING POST SW QUADRANGLE, SAN JUAN COUNTY, NEW MEXICO

BY
DAMES & MOORE
1979

PLATE 2
BOUNDARY AND COAL DATA MAP

This map was prepared under contract to the U.S. Geological Survey and has not been edited for conformity with Geological Survey editorial standards. Opinions and conclusions expressed herein do not necessarily represent those of the Geological Survey.