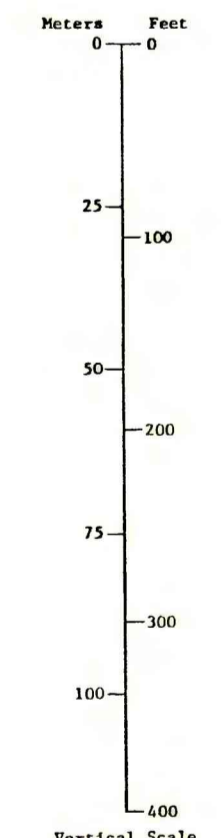
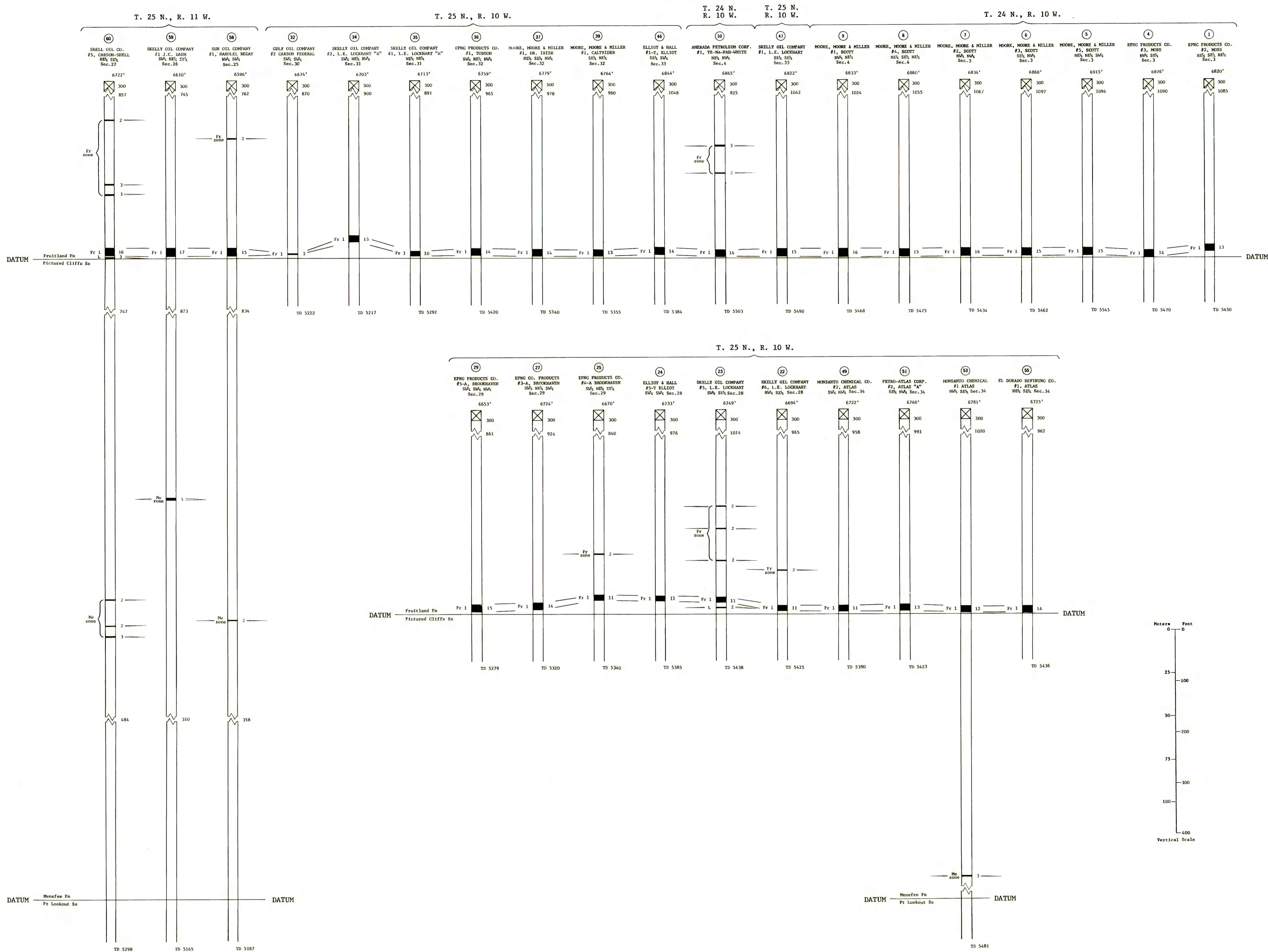


CORRELATION OF COAL BEDS IN DRILL HOLES



COAL RESOURCE OCCURRENCE MAP OF THE HUERFANO TRADING POST SW QUADRANGLE, SAN JUAN COUNTY, NEW MEXICO
BY
DAMES & MOORE
1979

OPEN FILE REPORT 79-152
PLATE 3 OF 11
This map was prepared under contract to the U.S. Geological Survey by Dames & Moore, Inc. in conformity with Geological Survey editorial standards. Opinions and conclusions expressed herein do not necessarily represent those of the Geological Survey.

COAL DATA SHEET
PLATE 3
SHEET 2 OF 3
Compiled in 1979