

EXPLANATION

1800
OVERBURDEN ISOPACHS - Showing thickness of overburden, in feet, from the surface to the top of the Menefee coal zone, which is coincident with the top of the La Ventana Tongue. Isopach interval 200 feet (61 meters). Isopachs dashed where inferred.

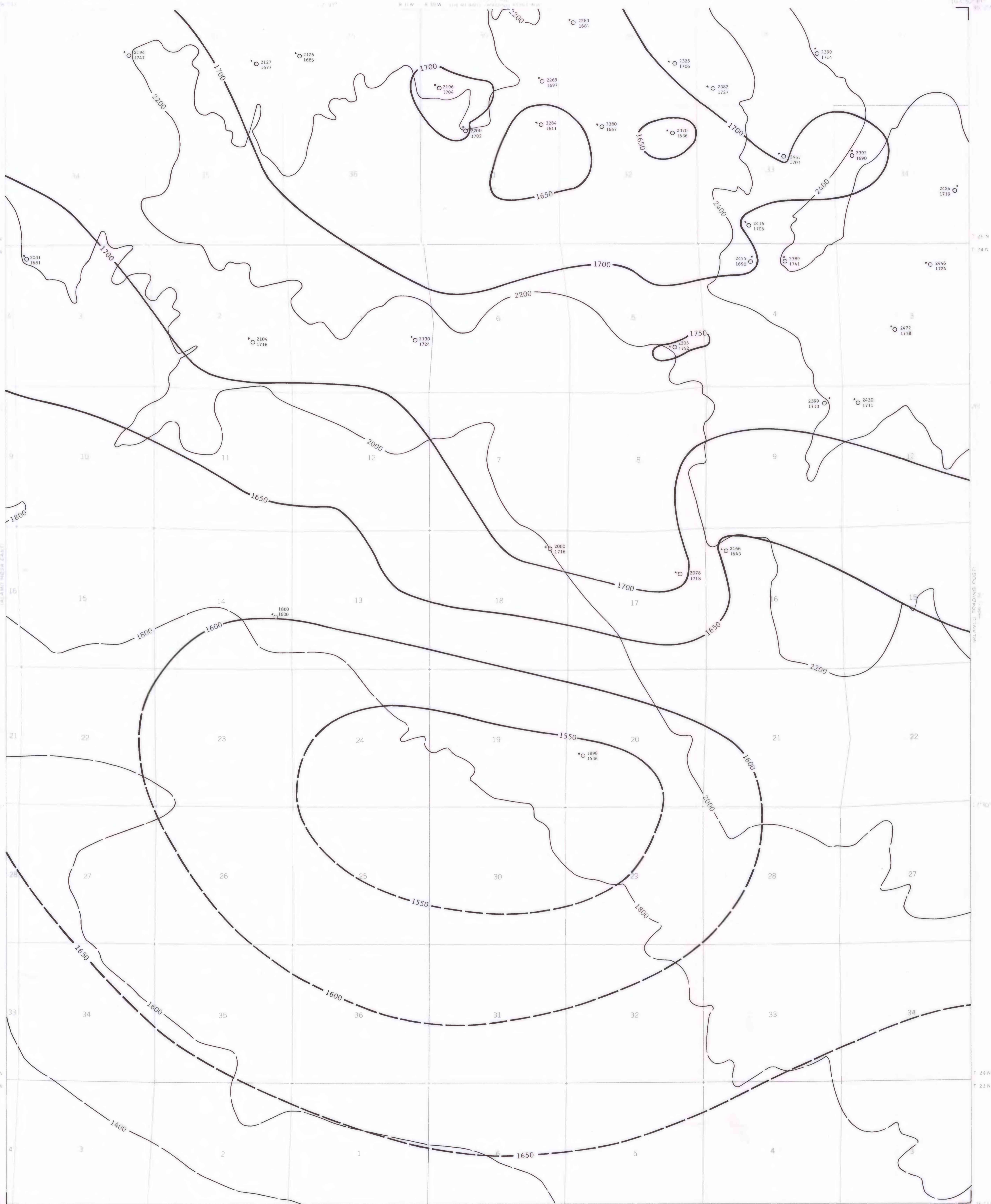
1550
INTERBURDEN ISOPACHS - Showing thickness of interburden, in feet, within the Menefee coal zone. Isopach interval 50 feet (15.2 meters). Isopachs dashed where inferred.

○ 1898
1536
DRILL HOLE - Showing thickness of overburden, in feet, (upper number) from the surface to the top of the Menefee coal zone, which is coincident with the top of the La Ventana Tongue, and thickness of interburden, in feet, (lower number) within the Menefee coal zone.

*The lower part of the Menefee coal zone lies below 3,000 feet (914.4 meters) of overburden. Therefore the value shown for this drill hole is not representative of the total zone.

To convert feet to meters, multiply feet by 0.3048.

The Menefee coal zone extends from the top of the La Ventana Tongue (Cliff House S3) to the base of the Menefee fm. The La Ventana Tongue and the Hogback Men. Tongue (Menefee fm) interfinger and are contemporaneous. The Menefee zone overburden is determined by subtracting the elevation of the top of the La Ventana Tongue (500 Plate 5) from the ground level elevation. The interburden is the noncoal-bearing portion of the Menefee coal zone (i.e. the combined rock thickness of the undifferentiated Menefee fm and the La Ventana Tongue).



Base from U.S. Geological Survey, 1966

Compiled in 1979

GN
1°44'
11 Mo.
1.83
460 Mo.
UTM GRID AND 1966 MAGNETIC NORTH DECLINATION AT CENTER OF SHEET



COAL RESOURCE OCCURRENCE MAP OF THE HUERFANO TRADING POST SW QUADRANGLE, SAN JUAN COUNTY, NEW MEXICO
BY
DAMES & MOORE
1979

This map was prepared under contract to the U.S. Geological Survey and has not been edited for conformity with Geological Survey editorial standards. Opinions and conclusions expressed herein do not necessarily represent those of the Geological Survey.
PLATE 6
ISOPACH MAP OF OVERBURDEN AND INTERBURDEN OF THE MENEFFEE COAL ZONE