

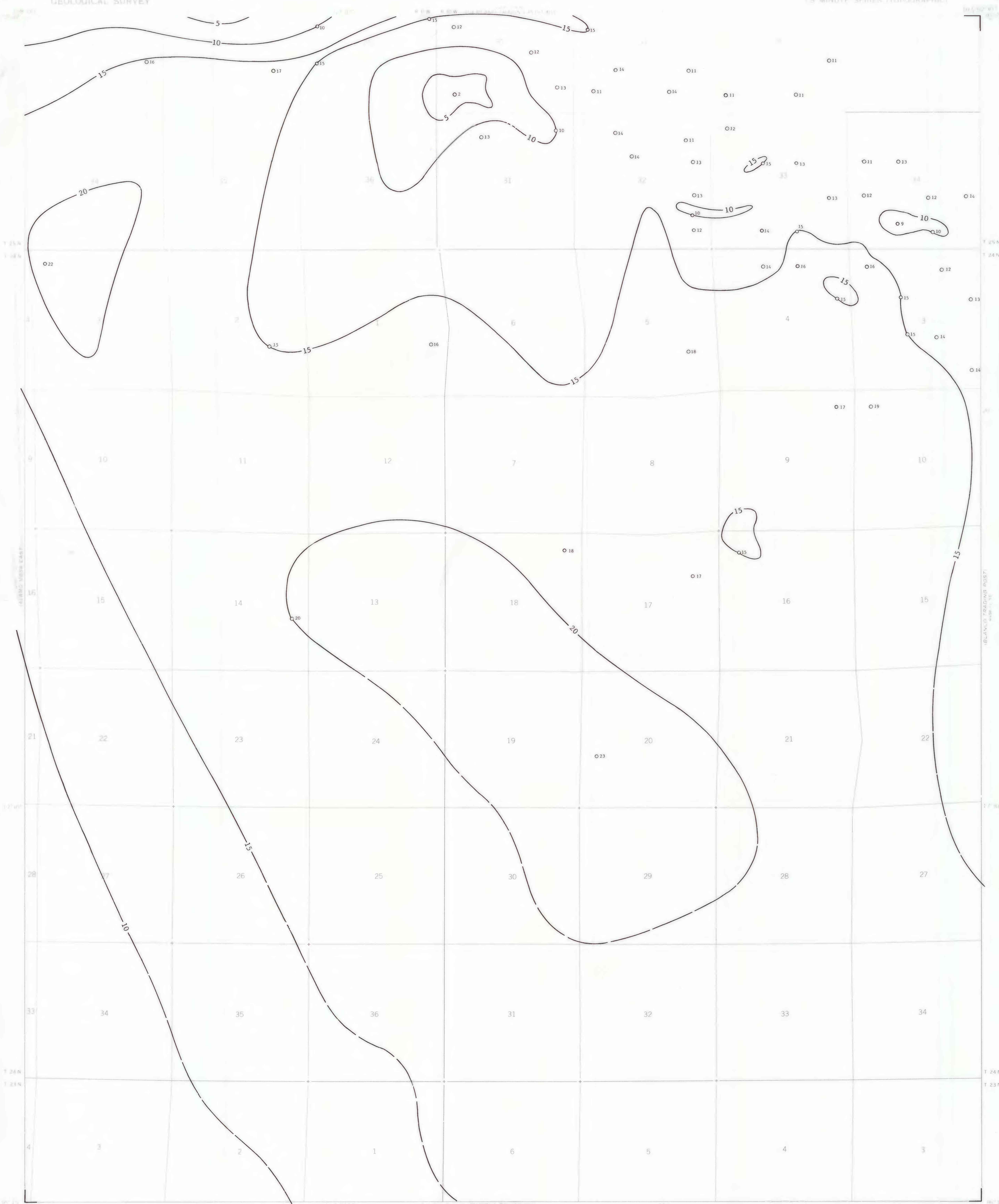
EXPLANATION

— 20 —  
ISOPACHS OF THE FRUITLAND 1 COAL BED -  
Showing thickness, in feet. Isopach  
interval 5 feet (1.5 meters). Isopachs  
dashed where inferred.

○ 14  
DRILL HOLE - Showing thickness of the Fruit-  
land 1 coal bed, in feet.

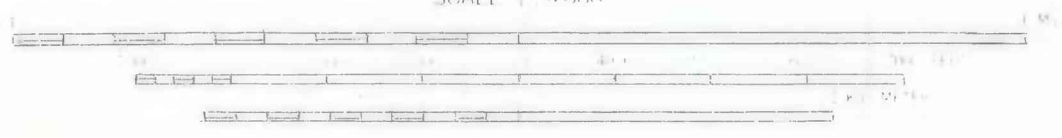
To convert feet to meters, multiply feet  
by 0.3048.

Fruitland coal beds isopached as a single  
bed on this map are equivalent in stratig-  
raphic position but may not be continuous.



Base from U.S. Geological Survey, 1966

Compiled in 1979



UTM GRID AND 1966 MAGNETIC NORTH  
DECLINATION AT CENTER OF SHEET



**COAL RESOURCE OCCURRENCE MAP OF THE HUERFANO TRADING POST SW  
QUADRANGLE, SAN JUAN COUNTY, NEW MEXICO**

**BY  
DAMES & MOORE  
1979**

This map was prepared under contract to the U.S. Geological Survey and has not been edited for conformity with Geological Survey editorial standards. Opinions and conclusions expressed herein do not necessarily represent those of the Geological Survey.

PLATE 7  
ISOPACH MAP OF THE  
FRUITLAND 1 COAL BED