

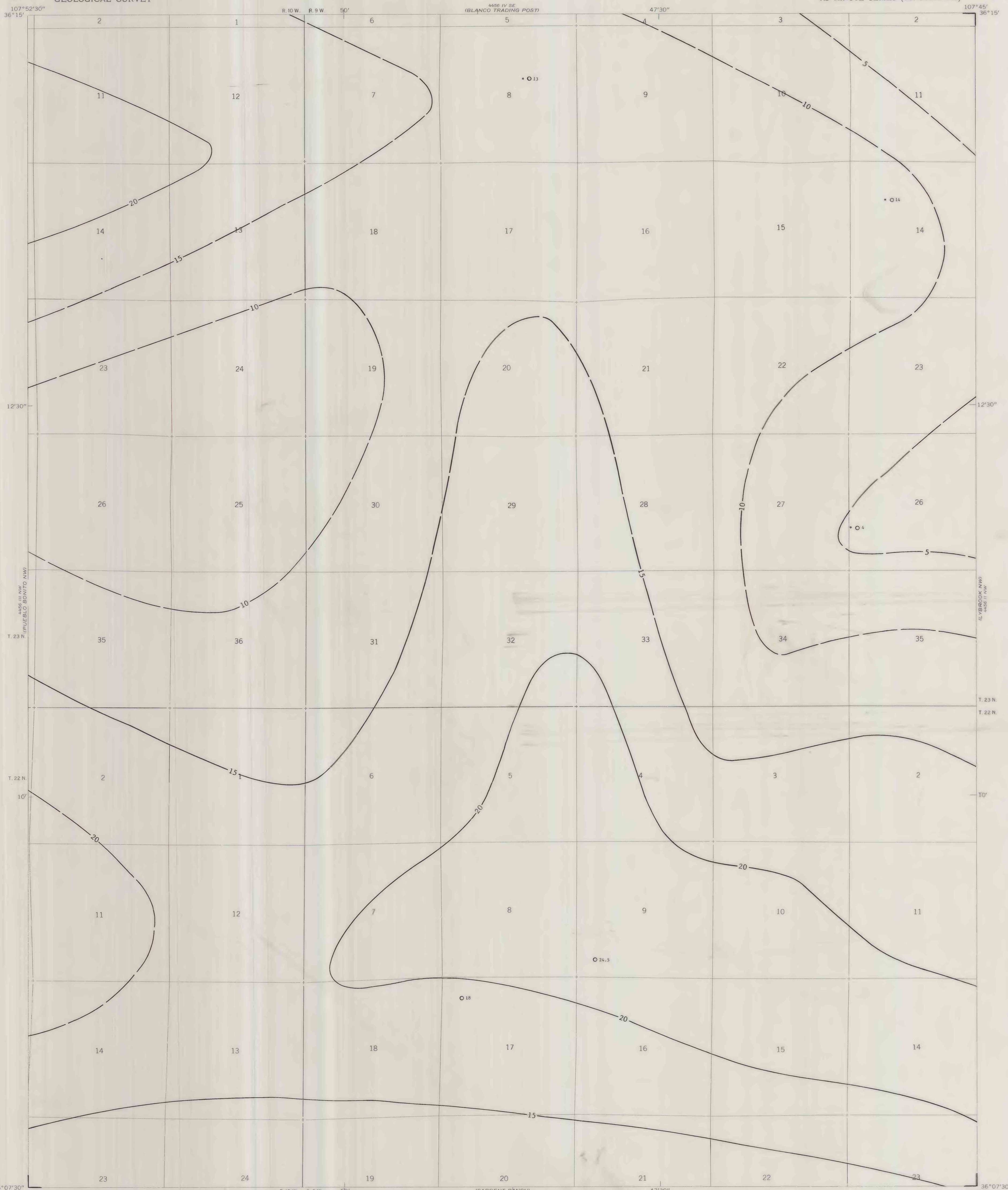
EXPLANATION

10  
ISOPACHS OF THE MENEFEE ZONE COAL BEDS -  
Showing total coal thickness, in feet.  
Isopach interval 5 feet (1.5 meters).  
Isopachs dashed where inferred.

24.5  
DRILL HOLE - Showing total thickness of  
Menefee zone coal beds, in feet.

To convert feet to meters, multiply feet by  
0.3048.

\*The lower part of the Menefee coal zone lies  
below 3,000 feet (914 meters) of overburden.  
Therefore, the value shown for this  
drill hole is not representative of the  
total zone.



COAL RESOURCE OCCURRENCE MAP OF THE KIMBETO QUADRANGLE,  
SAN JUAN COUNTY, NEW MEXICO

BY  
DAMES & MOORE  
1979

This map was prepared under contract to the U.S. Geological Survey and has not been edited for conformity with Geological Survey editorial standards. Opinions and conclusions expressed herein do not necessarily represent those of the Geological Survey.