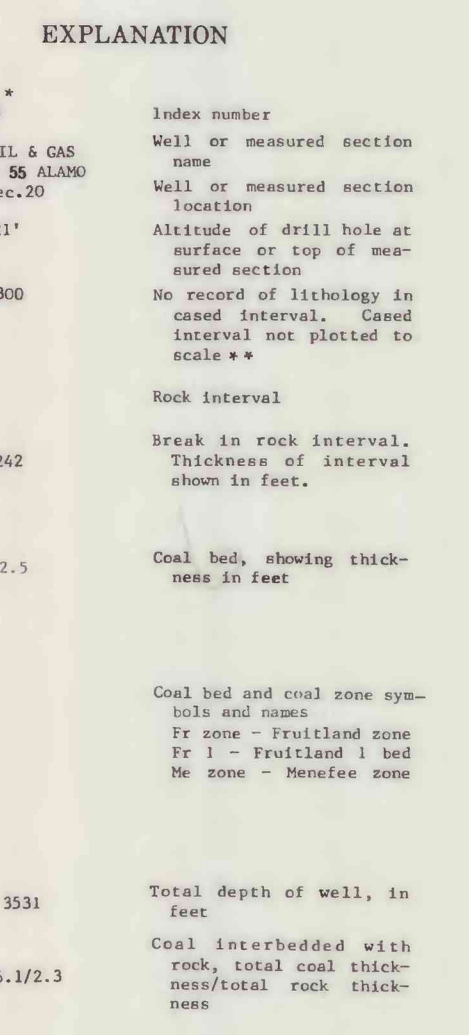
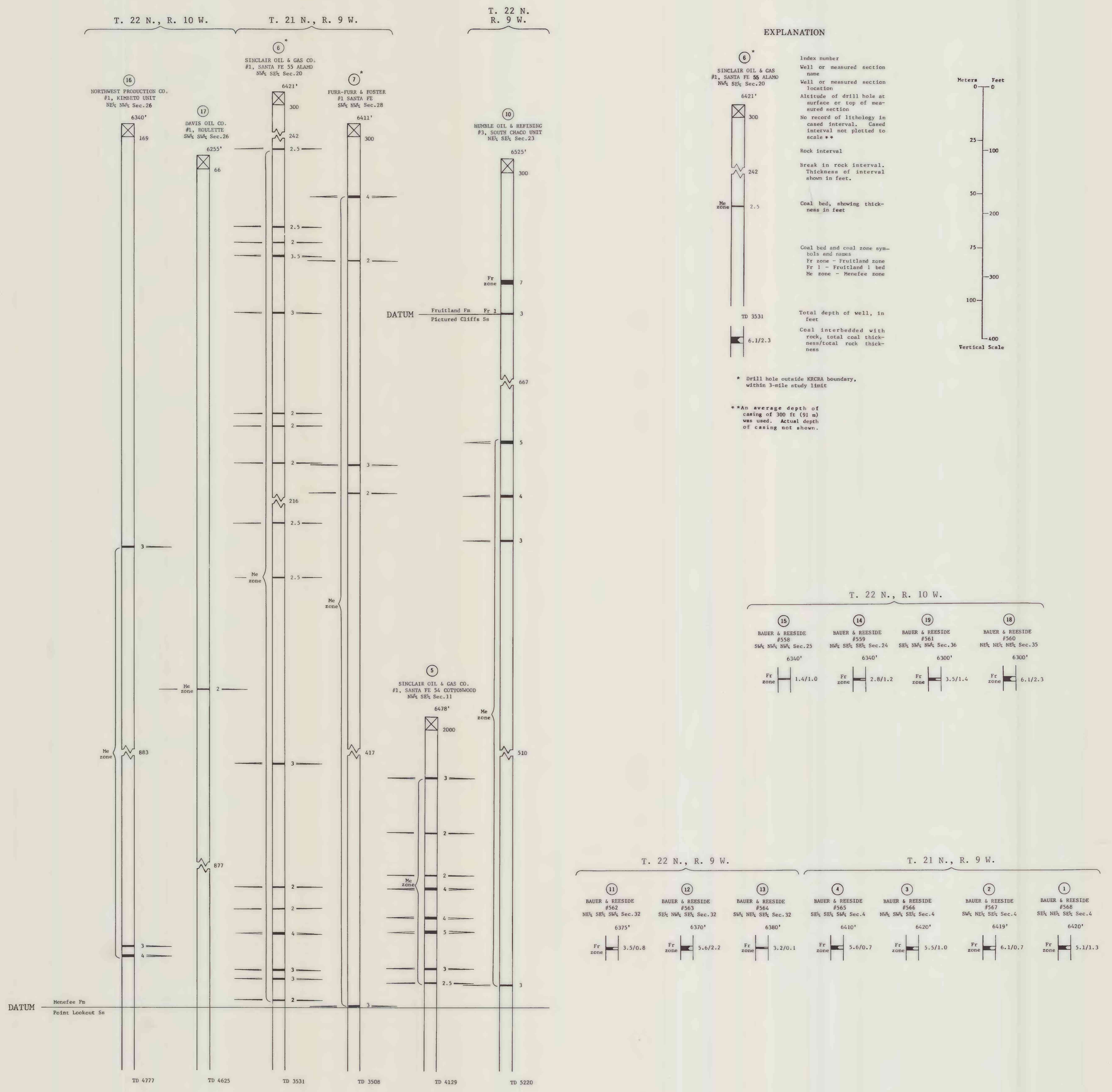
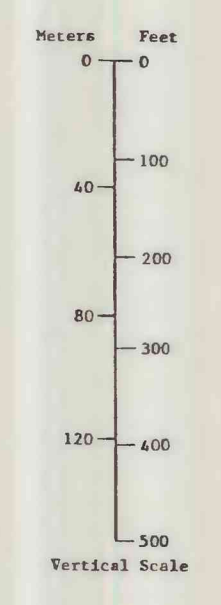


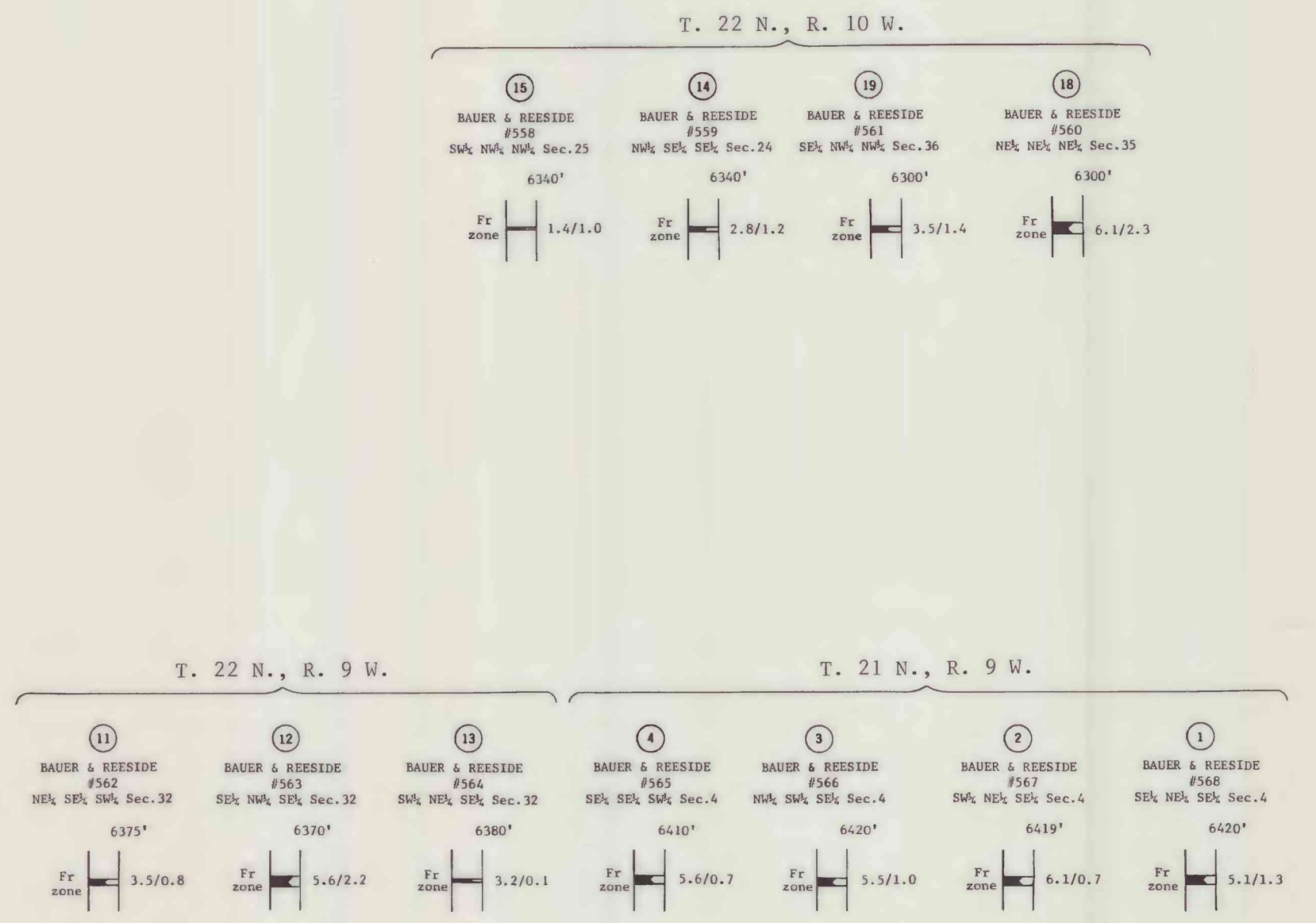
This map was prepared under contract to the U.S. Geological Survey and has not been edited for conformity with Geological Survey editorial standards. Opinions and conclusions expressed herein are those of the author and do not represent those of the Survey.

CORRELATION OF COAL BEDS IN DRILL HOLES AND MEASURED SECTIONS

SYSTEM	SERIES	GROUP	FORMATION	MEMBER	COAL BED NAME	LITHOLOGIC DESCRIPTION
CRETACEOUS	UPPER CRETACEOUS	MESAVEPPE GROUP	CLIFF HOUSE SANDSTONE	CHACRA TONGUE	*	1. Surface outcrop ranges from the Chacra Tongue of the Cliff House Sandstone in the southwest quadrant to the Kirtland Shale in the northeast quadrant.
						2. Silty shale, gray to gray-brown
						3. Shale, light olive green to gray, carbonaceous, calcareous, flaky; thin interbedded sandstone, gray, calcareous
						4. Coal, Fruitland zone
						5. Coal, Fruitland 1 bed
						6. Sandstone, white to light gray, calcareous, scattered siderite grains; thin interbedded shale, gray-green
						7. Shale, dark gray, plant fossils, calcareous; interbedded sandstone, gray, calcareous
						8. Sandstone, light gray, locally silty, slightly calcareous; interbedded shale and siltstone
						9. Sandstone, light gray, calcareous, interstratified kaolinite
						10. Shale, dark gray, to brown, carbonaceous; interbedded sandstone
						11. Coal, Menefee zone
						12. Shale, gray to brown, carbonaceous to noncarbonaceous, slightly calcareous, plant fossils; interbedded sandstone, white to tan, calcareous
						13. Coal, Menefee zone
						14. Sandstone, light to medium gray, slightly calcareous; thin interbedded shale, gray
** Informal name - local usage.						
CRETACEOUS	UPPER CRETACEOUS	MESAVEPPE GROUP	FRUITLAND FM	UNDIFFERENTIATED	*	1. Surface outcrop ranges from the Chacra Tongue of the Cliff House Sandstone in the southwest quadrant to the Kirtland Shale in the northeast quadrant.
						2. Silty shale, gray to gray-brown
						3. Shale, light olive green to gray, carbonaceous, calcareous, flaky; thin interbedded sandstone, gray, calcareous
						4. Coal, Fruitland zone
						5. Coal, Fruitland 1 bed
						6. Sandstone, white to light gray, calcareous, scattered siderite grains; thin interbedded shale, gray-green
						7. Shale, dark gray, plant fossils, calcareous; interbedded sandstone, gray, calcareous
						8. Sandstone, light gray, locally silty, slightly calcareous; interbedded shale and siltstone
						9. Sandstone, light gray, calcareous, interstratified kaolinite
						10. Shale, dark gray, to brown, carbonaceous; interbedded sandstone
						11. Coal, Menefee zone
						12. Shale, gray to brown, carbonaceous to noncarbonaceous, slightly calcareous, plant fossils; interbedded sandstone, white to tan, calcareous
						13. Coal, Menefee zone
						14. Sandstone, light to medium gray, slightly calcareous; thin interbedded shale, gray
** Informal name - local usage.						



* Drill hole outside KRCEA boundary, within 3-mile study limit.
** An average depth of casing of 300 ft (91 m) was used. Actual depth of casing not shown.



COAL RESOURCE OCCURRENCE MAP OF THE SARGENT RANCH QUADRANGLE, SAN JUAN AND McKINLEY COUNTIES, NEW MEXICO

BY
DAMES & MOORE
1979