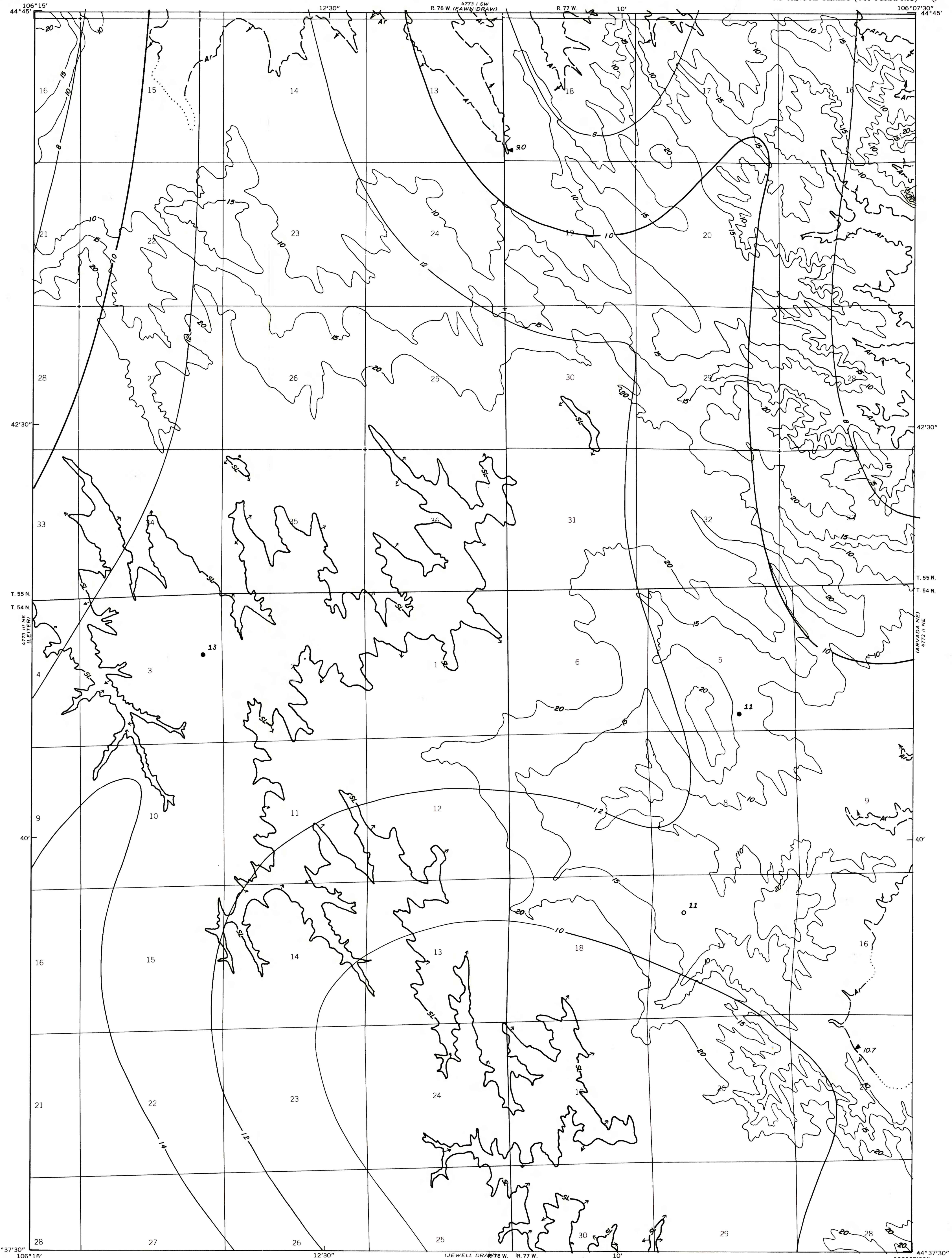


4773 II SE  
GARDNER BUTTE



EXPLANATION

● 13 ○ 11  
DRILL HOLE-Showing coal thickness  
in feet.

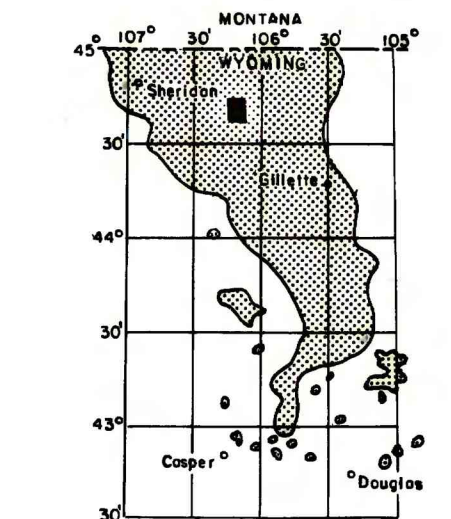
— 5 —  
— 10 —  
ISOPACHS OF COAL BED-Showing  
thickness in feet. Isopach  
interval 2 feet. Dashed where  
coal is burned or eroded.

— 15 —  
MINING RATIO CONTOUR-Number indicates  
cubic yards of overburden per ton  
of recoverable coal by surface mining  
methods. Contours shown only in  
area suitable for surface mining  
within the stripping limit.

— SL —  
STRIPPING LIMIT LINE-500 foot  
overburden isopach boundary for  
surface mining of coal. Arrows  
point toward area suitable for  
surface mining.

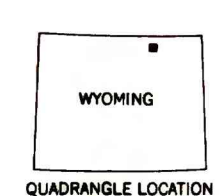
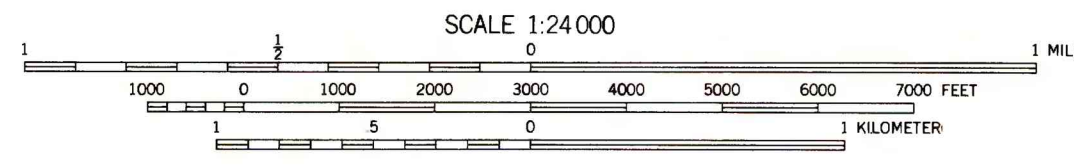
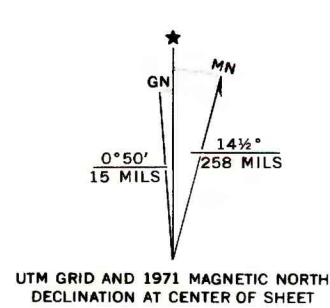
▲ 10.7  
TRACE OF COAL BED OUTCROP-Showing  
coal thickness in feet, measured  
at triangle. Arrow points toward  
the coal-bearing area. Coal bed  
dashed where inferred or projected.  
Coal bed dotted where covered.

To convert feet to meters,  
multiply feet by 0.3048.



MAP SHOWING LOCATION OF THE  
ARVADA QUADRANGLE AND THE  
POWDER RIVER BASIN KNOWN RE-  
COVERABLE COAL RESOURCE AREA  
(STIPPLED), WYOMING

4773 III SE  
HARRAN BUTTE



**COAL RESOURCE OCCURRENCE MAP OF THE ARVADA  
QUADRANGLE, SHERIDAN COUNTY, WYOMING**  
BY  
**IntraSearch**  
1980

This report has not been edited  
for conformity with U. S. Geological  
Survey editorial standards or  
stratigraphic nomenclature.

**PLATE 4  
ISOPACH AND MINING-RATIO  
MAP OF  
ARVADA COAL BED**