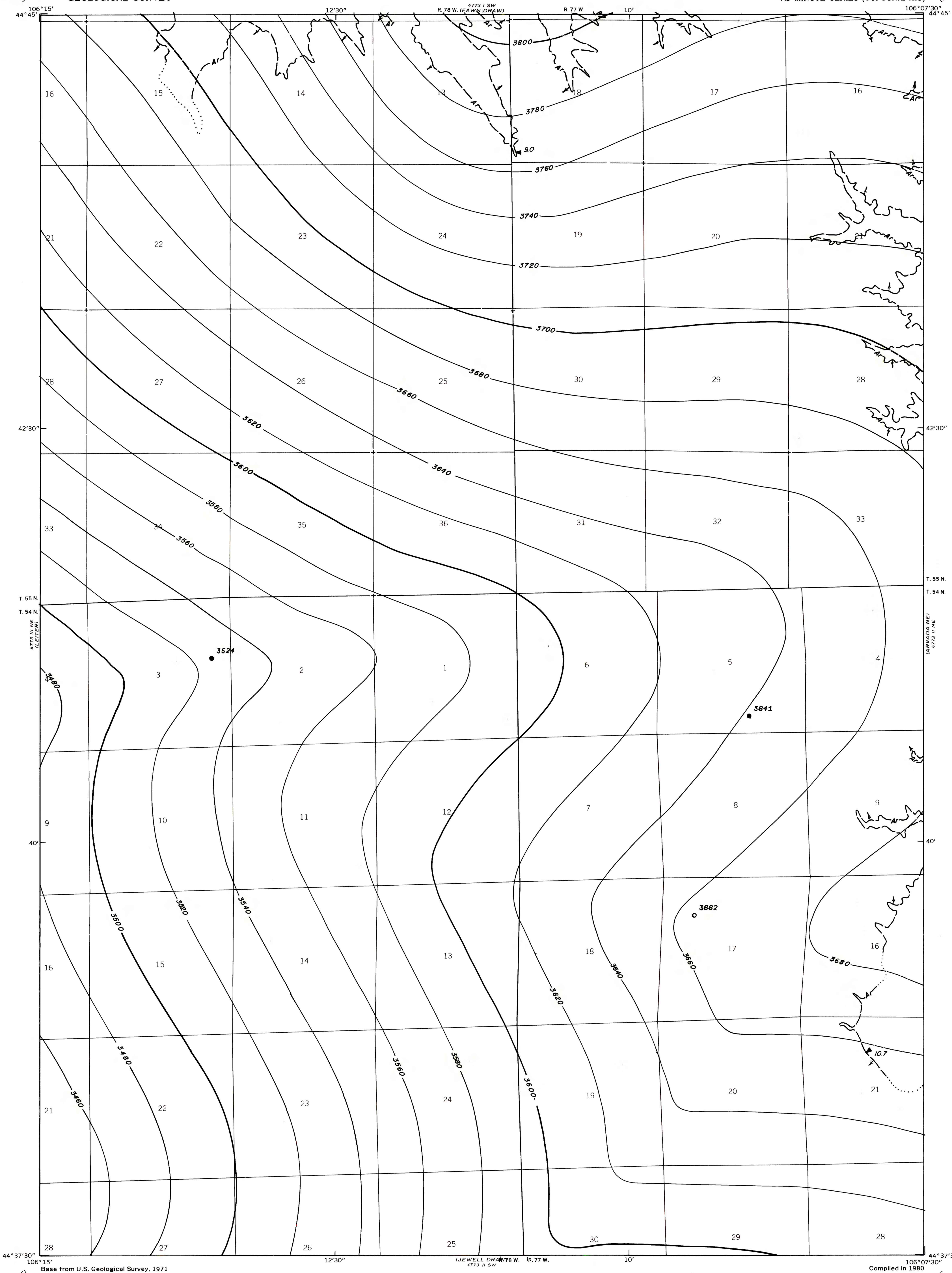


4773 N 5E  
GARDNER QU. SW



EXPLANATION

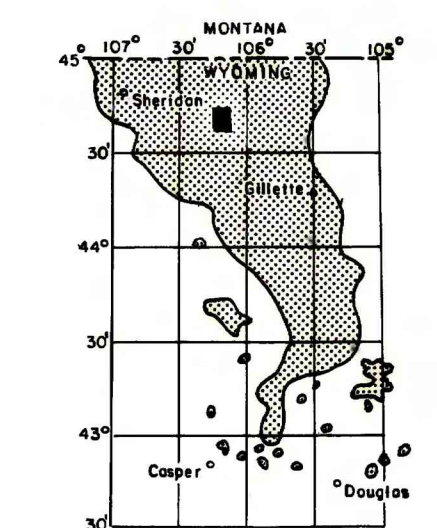
● 3641 ○ 3662  
DRILL HOLE-Showing elevation  
at top of coal bed, in feet.

--- 3720 ---  
--- 3700 ---

STRUCTURE CONTOURS-Drawn on top  
of coal bed. Contour interval  
20 feet. Datum is mean sea  
level. Dashed where coal is  
eroded or projected.

--- Ar ---  
TRACE OF COAL BED OUTCROP-Arrow  
points toward the coal-bearing  
area. Coal bed dashed where  
inferred or projected. Coal  
bed dotted where covered.

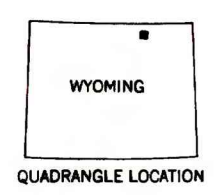
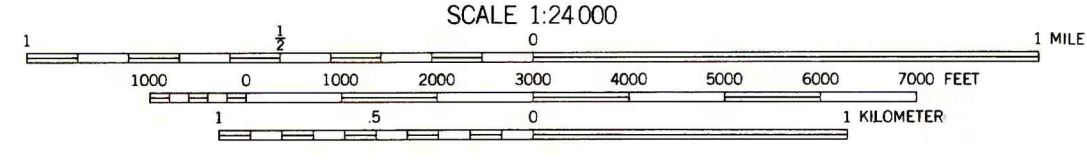
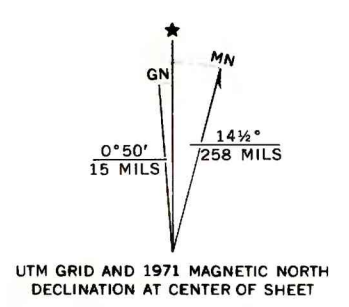
To convert feet to meters,  
multiply feet by 0.3048.



MAP SHOWING LOCATION OF THE  
ARVADA QUADRANGLE AND THE  
POWDER RIVER BASIN KNOWN RE-  
COVERABLE COAL RESOURCE AREA  
(STIPPLED), WYOMING

Base from U.S. Geological Survey, 1971

Compiled in 1980



**COAL RESOURCE OCCURRENCE MAP OF THE ARVADA  
QUADRANGLE, SHERIDAN COUNTY, WYOMING**

BY  
**IntraSearch**  
1980

This report has not been edited  
for conformity with U. S. Geological  
Survey editorial standards or  
stratigraphic nomenclature.