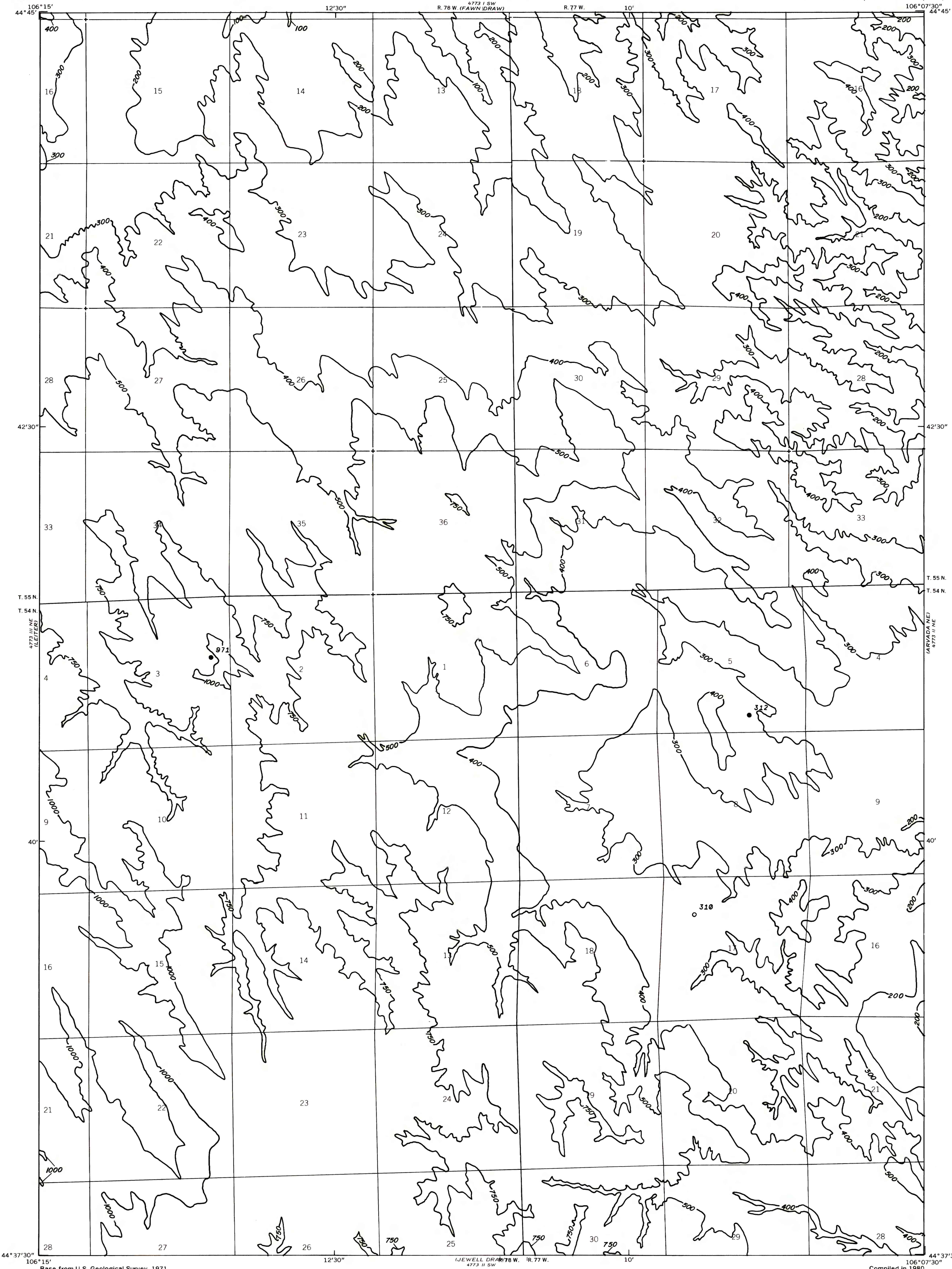


4773 I SW  
4773 II SW  
4773 III SW  
4773 IV SW  
4773 V SW  
4773 VI SW  
4773 VII SW  
4773 VIII SW  
4773 IX SW  
4773 X SW  
4773 XI SW  
4773 XII SW  
4773 XIII SW  
4773 XIV SW  
4773 XV SW  
4773 XVI SW  
4773 XVII SW  
4773 XVIII SW  
4773 XIX SW  
4773 XX SW  
4773 XXI SW  
4773 XXII SW  
4773 XXIII SW  
4773 XXIV SW  
4773 XXV SW  
4773 XXVI SW  
4773 XXVII SW  
4773 XXVIII SW  
4773 XXIX SW  
4773 XXX SW

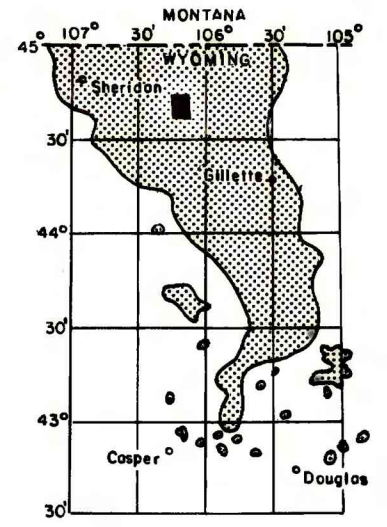


EXPLANATION

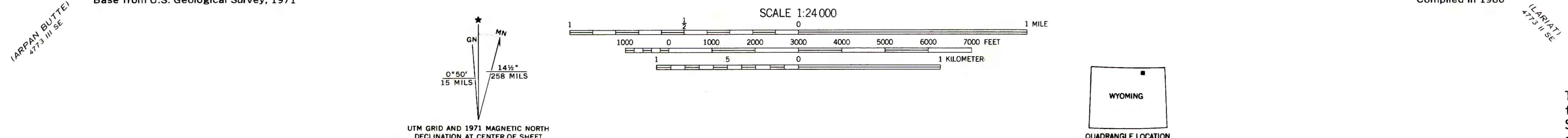
● 312 ○ 310  
DRILL HOLE-Showing thickness of overburden, in feet, from the surface to top of coal bed.

— 300 —  
OVERBURDEN ISOPACH-Showing thickness of overburden, in feet, from the surface to the top of the coal bed. Isopach interval 100 feet below the 500 foot isopach; 250 feet above the 500 foot isopach.

To convert feet to meters, multiply feet by 0.3048.



MAP SHOWING LOCATION OF THE ARVADA QUADRANGLE AND THE POWDER RIVER BASIN KNOWN RECOVERABLE COAL RESOURCE AREA (STIPPLED), WYOMING



COAL RESOURCE OCCURRENCE MAP OF THE ARVADA QUADRANGLE, SHERIDAN COUNTY, WYOMING

BY  
**IntraSearch**  
1980

PLATE 11  
ISOPACH MAP OF  
OVERBURDEN OF  
UPPER SMITH COAL BED

This report has not been edited for conformity with U. S. Geological Survey editorial standards or stratigraphic nomenclature.