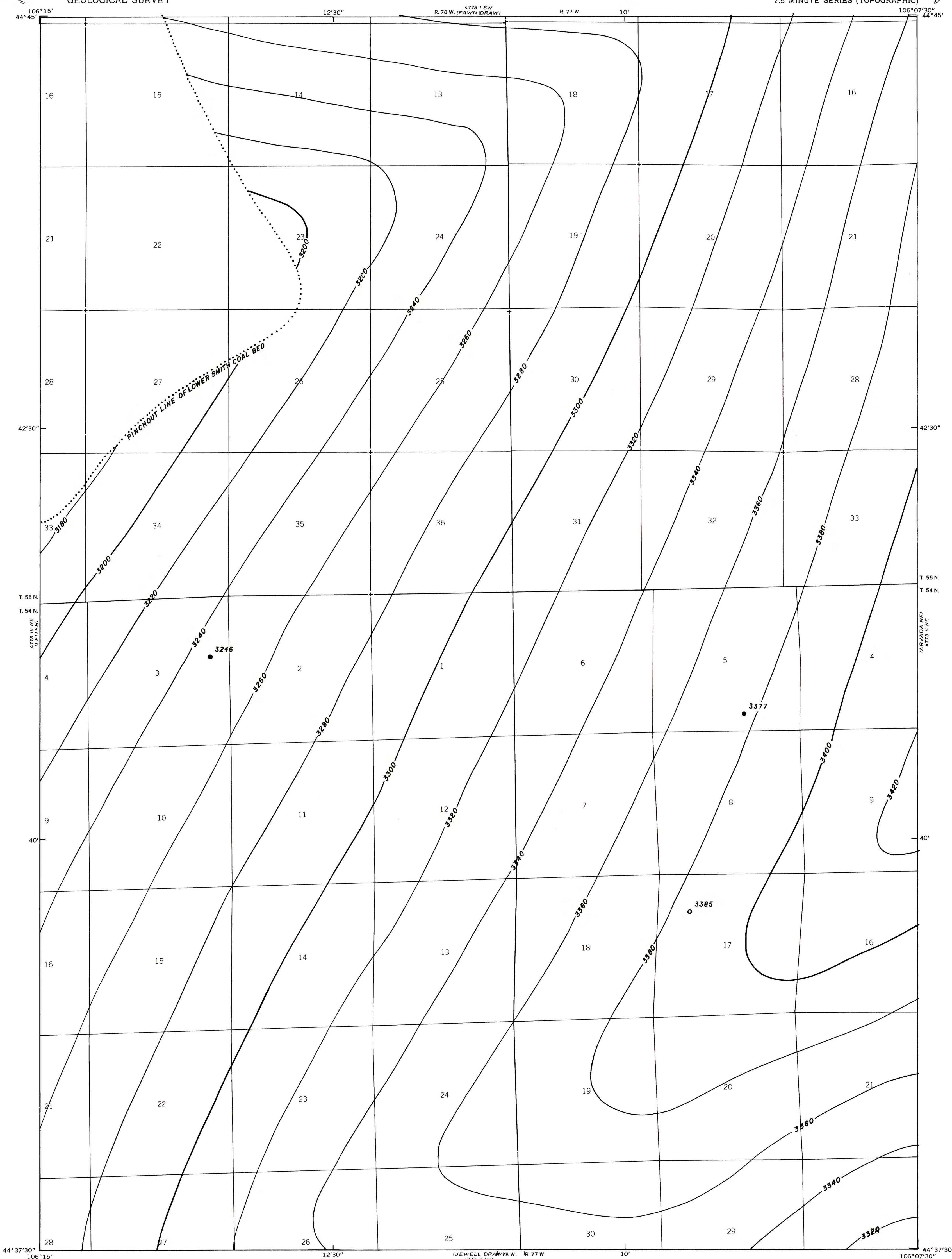


69721 NE
GARFIELD CO. I.D.

4773 SE
CABIN CREEK 50

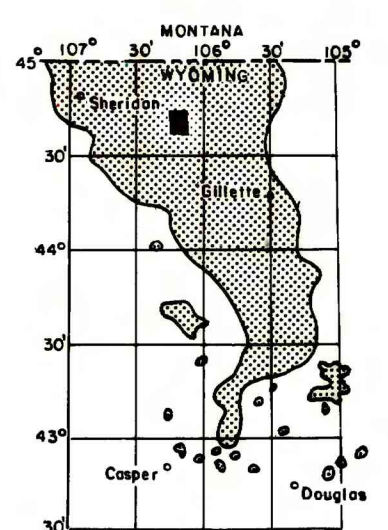


EXPLANATION

● 3246 ○ 3385
DRILL HOLE-Showing elevation
at top of coal bed, in feet.

— 3380 —
— 3400 —
STRUCTURE CONTOURS-Drawn on top
of coal bed. Contour interval
20 feet. Datum is mean sea
level.

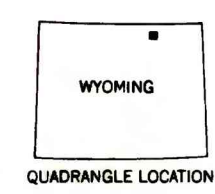
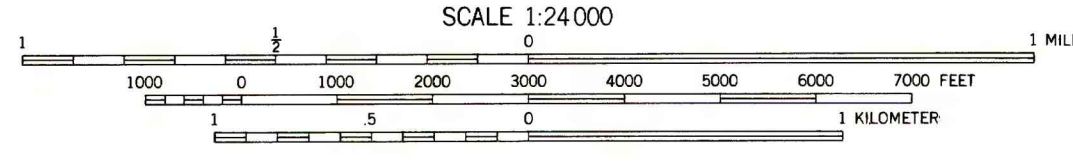
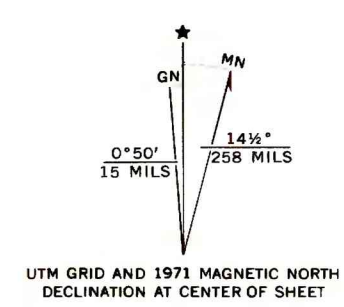
To convert feet to meters,
multiply feet by 0.3048.



MAP SHOWING LOCATION OF THE
ARVADA QUADRANGLE AND THE
POWDER RIVER BASIN KNOWN RE-
COVERABLE COAL RESOURCE AREA
(STIPPLED), WYOMING

Base from U.S. Geological Survey, 1971

Compiled in 1980



**COAL RESOURCE OCCURRENCE MAP OF THE ARVADA
QUADRANGLE, SHERIDAN COUNTY, WYOMING**

BY
IntraSearch
1980

PLATE 15
STRUCTURE CONTOUR MAP OF
LOWER SMITH COAL BED

This report has not been edited
for conformity with U. S. Geological
Survey editorial standards or
stratigraphic nomenclature.