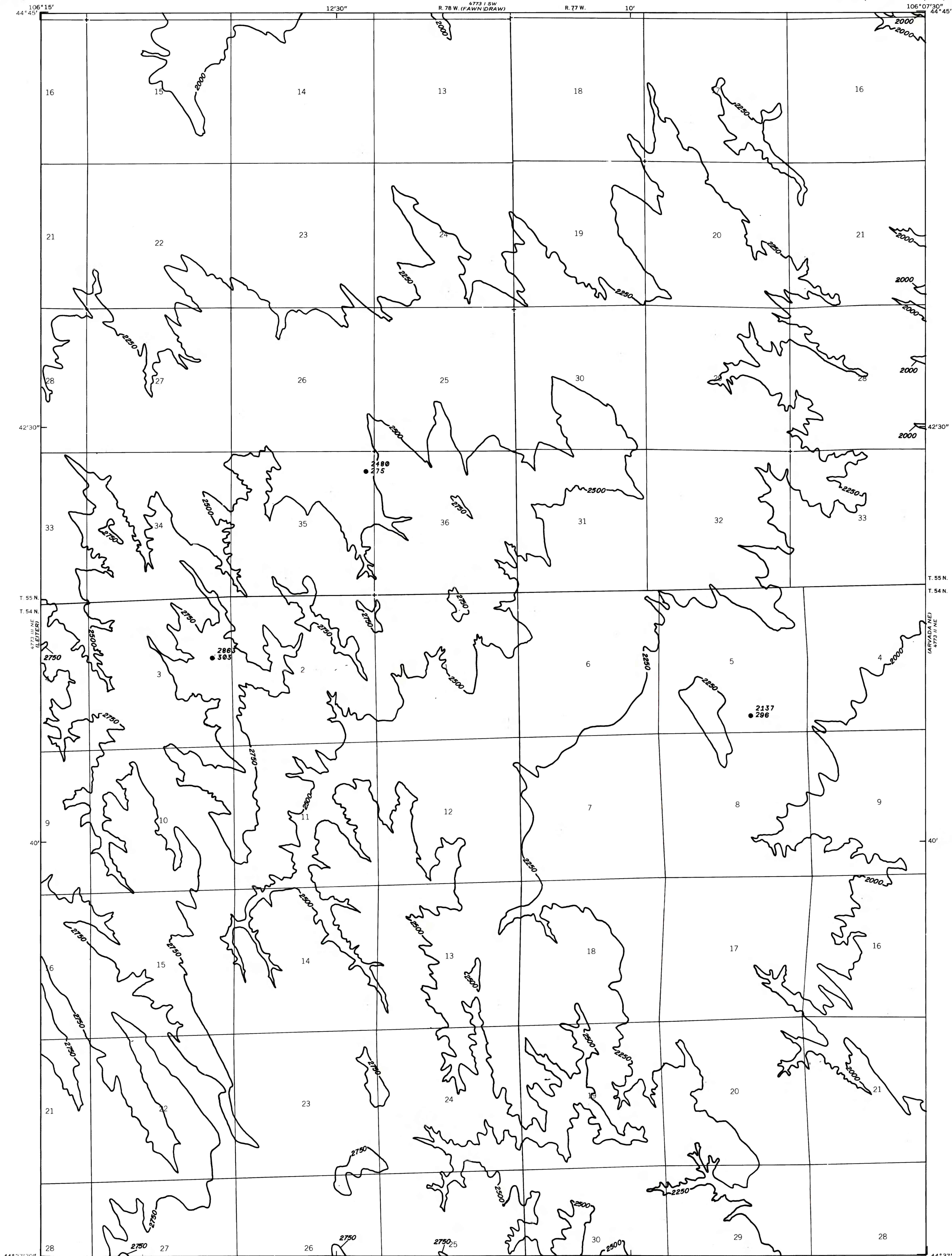


44°37'30" N
106°07'30" W
GARDNER BLK. (1)

44°37'30" N
106°07'30" W
GARDNER BLK. (1)



EXPLANATION

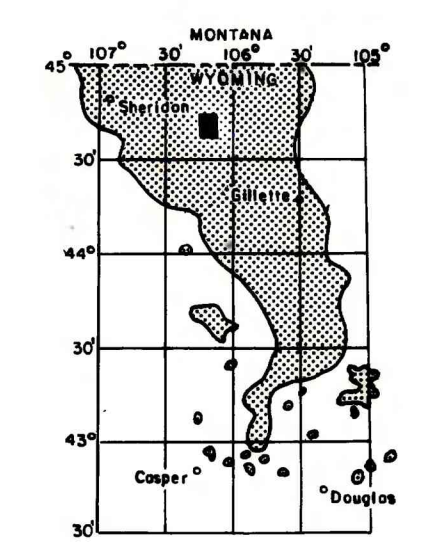
● 2137
● 296

DRILL HOLE-Showing thickness of overburden, in feet, from the surface to top of coal bed. Lower number indicates interburden thickness, in feet, between upper and lower splits of coal bed.

— 2250 —

OVERBURDEN ISOPACH-Showing thickness of overburden, in feet, from the surface to the top of the coal bed. Isopach interval 250 feet.

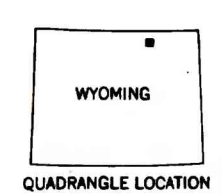
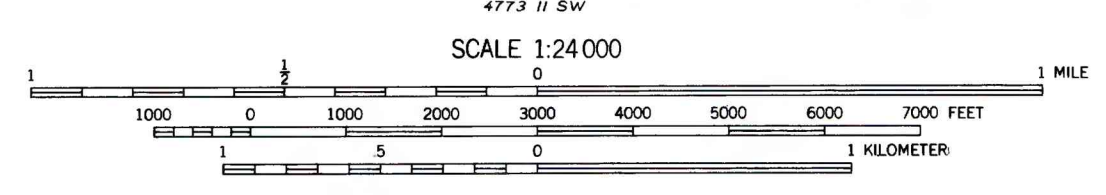
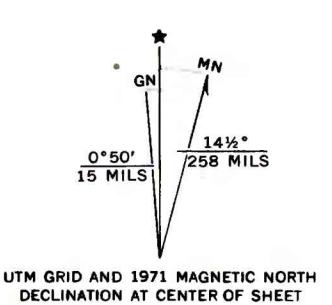
To convert feet to meters,
multiply feet by 0.3048.



MAP SHOWING LOCATION OF THE ARVADA QUADRANGLE AND THE POWDER RIVER BASIN KNOWN RECOVERABLE COAL RESOURCE AREA (STIPPLED), WYOMING

44°37'30" N
106°07'30" W
GARDNER BLK. (1)

Base from U.S. Geological Survey, 1971



**COAL RESOURCE OCCURRENCE MAP OF THE ARVADA
QUADRANGLE, SHERIDAN COUNTY, WYOMING**

BY
IntraSearch
1980

**PLATE 41
ISOPACH MAP OF
OVERBURDEN OF
MOYER-OEDEKOVEN COAL BED COMPOSITE**

This report has not been edited for conformity with U. S. Geological Survey editorial standards or stratigraphic nomenclature.