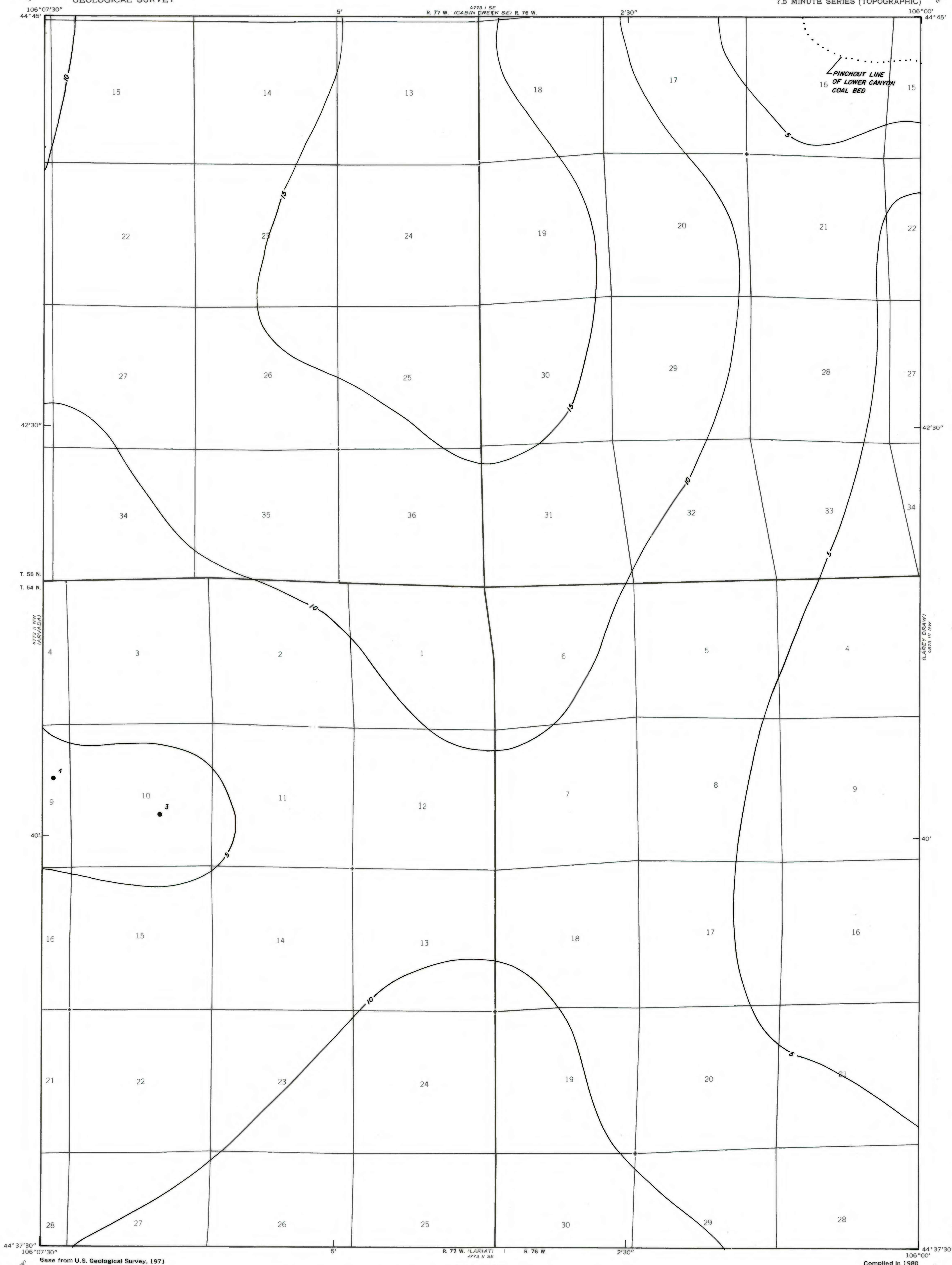


4773 I SE  
(LARRY DRAW)  
4773 II SE  
(LARRY DRAW)

UNITED STATES  
DEPARTMENT OF THE INTERIOR  
GEOLOGICAL SURVEY

ARVADA NE QUADRANGLE  
WYOMING  
7.5 MINUTE SERIES (TOPOGRAPHIC)

OPEN FILE REPORT 79-167  
PLATE 29 OF 55

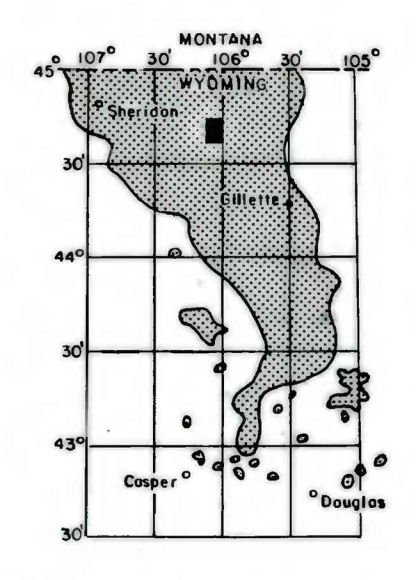


EXPLANATION

● 3  
DRILL HOLE-Showing coal thickness in feet.

— 10 —  
ISOPACH OF COAL BED-Showing thickness in feet. Isopach interval 5 feet.

To convert feet to meters, multiply feet by 0.3048.

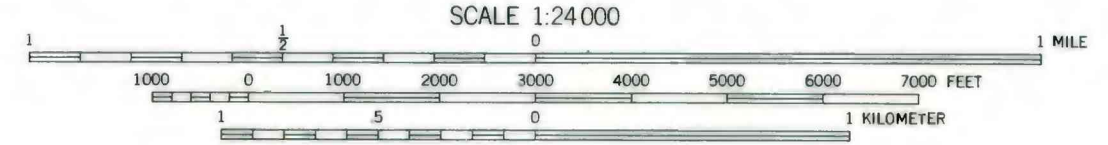
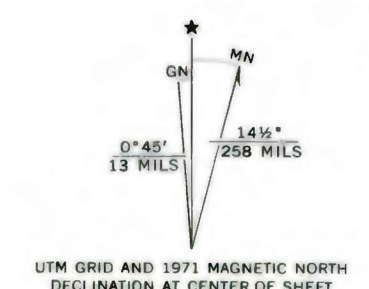


MAP SHOWING LOCATION OF THE ARVADA NE QUADRANGLE AND THE POWDER RIVER BASIN KNOWN RECOVERABLE COAL RESOURCE AREA (STIPPLED), WYOMING

4773 I SE  
(LARRY DRAW)  
4773 II SE  
(LARRY DRAW)

Base from U.S. Geological Survey, 1971

Compiled in 1980



**COAL RESOURCE OCCURRENCE MAP OF THE ARVADA NE QUADRANGLE, SHERIDAN AND CAMPBELL COUNTIES, WYOMING**

BY  
**intraSearch**  
1980

PLATE 29  
ISOPACH MAP OF  
LOWER CANYON COAL BED

This report has not been edited for conformity with U. S. Geological Survey editorial standards or stratigraphic nomenclature.