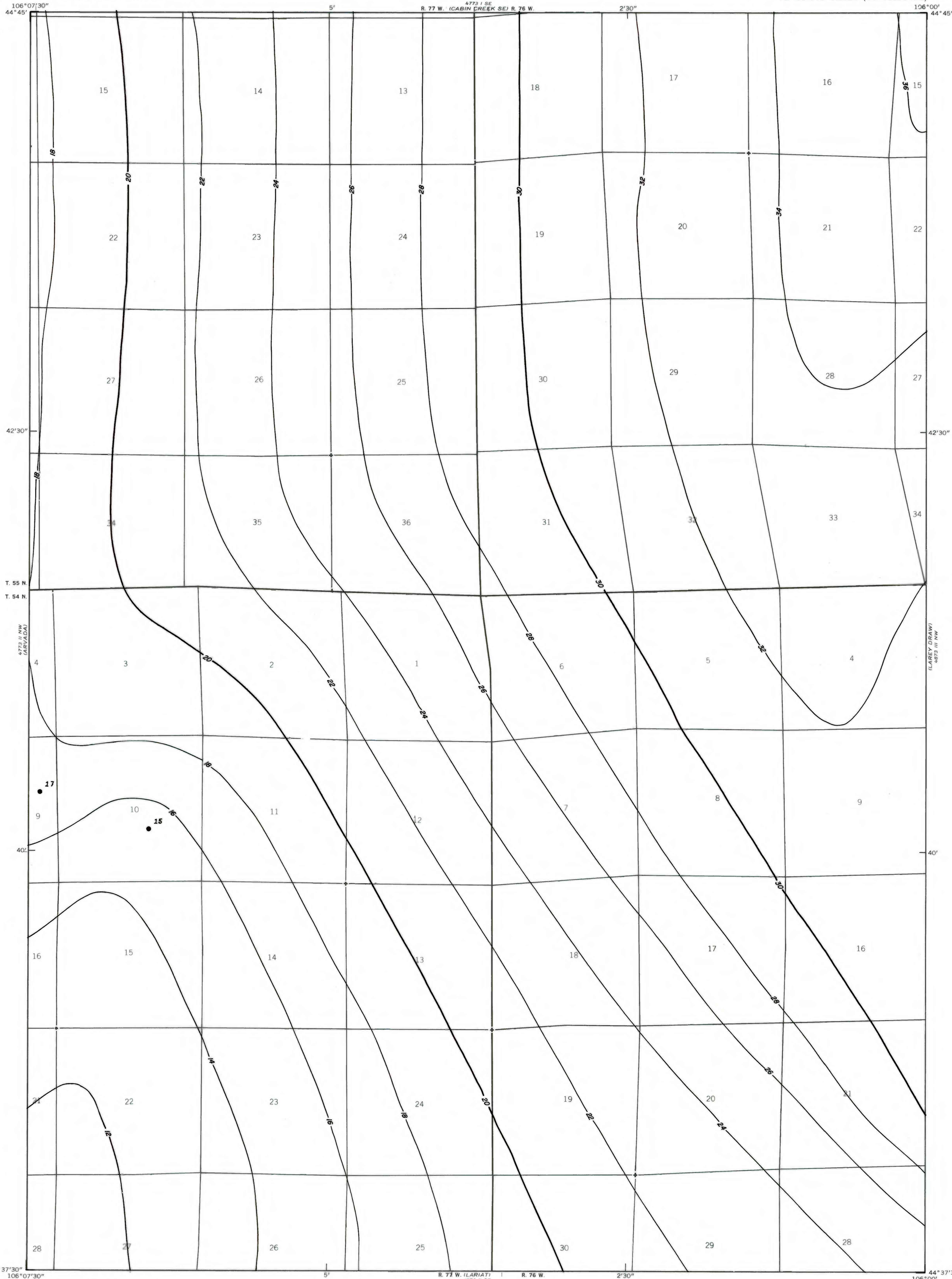


4773 II SW  
(FAYAN DRAW)

4773 II SW  
(LAREY DRAW)

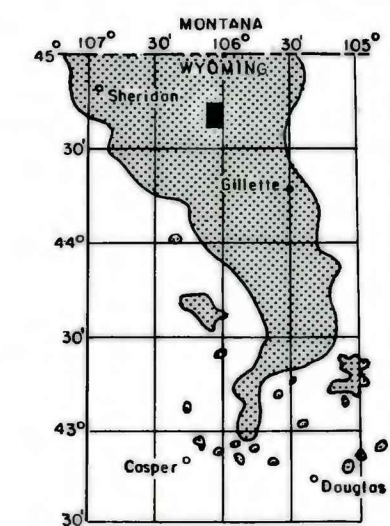


EXPLANATION

● 15  
● 17  
DRILL HOLE-Showing coal thickness  
in feet.

— 28 —  
— 30 —  
ISOPACHS OF COAL BED-Showing  
thickness in feet. Isopach  
interval 2 feet.

To convert feet to meters,  
multiply feet by 0.3048.

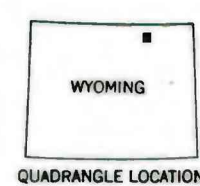
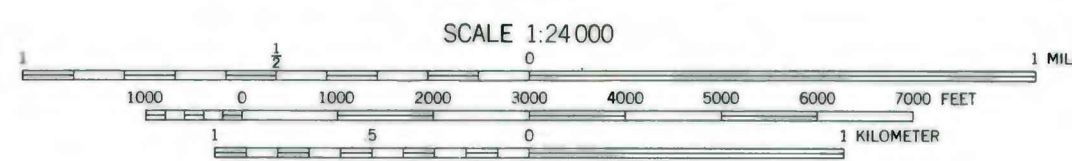
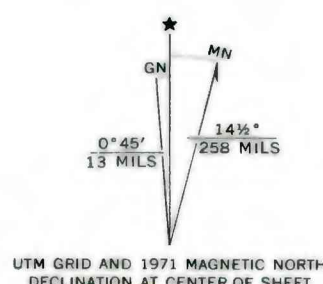


MAP SHOWING LOCATION OF THE  
ARVADA NE QUADRANGLE AND  
THE POWDER RIVER BASIN KNOWN  
RECOVERABLE COAL RESOURCE  
AREA (STIPPLED), WYOMING

4773 II SW  
(JEWELL DRAW)

Base from U.S. Geological Survey, 1971

Compiled in 1980



**COAL RESOURCE OCCURRENCE MAP OF THE ARVADA NE  
QUADRANGLE, SHERIDAN AND CAMPBELL COUNTIES, WYOMING**

BY  
**IntraSearch**  
1980

This report has not been edited  
for conformity with U. S. Geological  
Survey editorial standards or  
stratigraphic nomenclature.

PLATE 34  
ISOPACH MAP OF  
COOK COAL BEDS