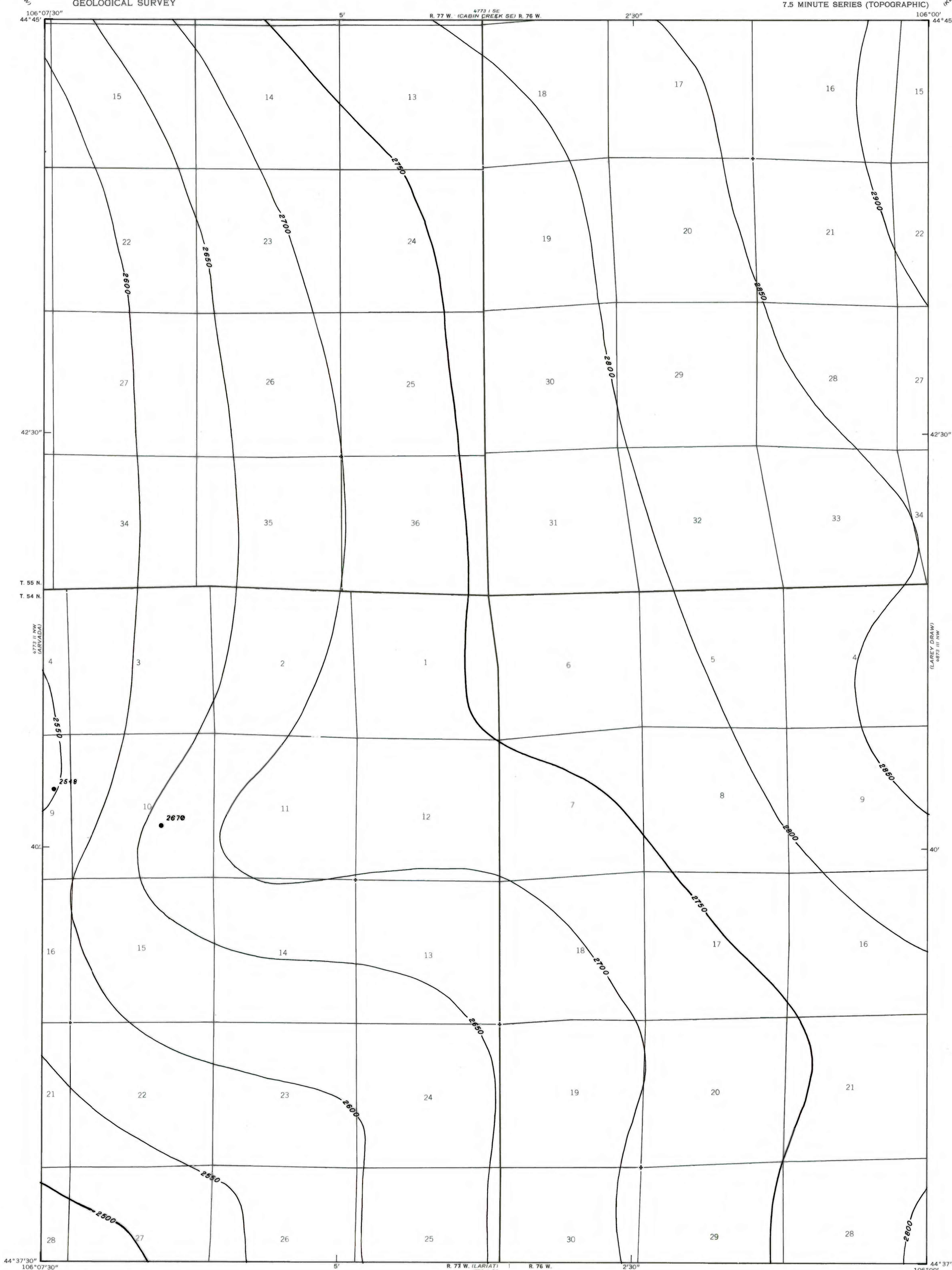


4773 1 SW  
(LAREY DRAW)

UNITED STATES  
DEPARTMENT OF THE INTERIOR  
GEOLOGICAL SURVEY

ARVADA NE QUADRANGLE  
WYOMING  
7.5 MINUTE SERIES (TOPOGRAPHIC)

OPEN FILE REPORT 79-167  
PLATE 35 OF 55

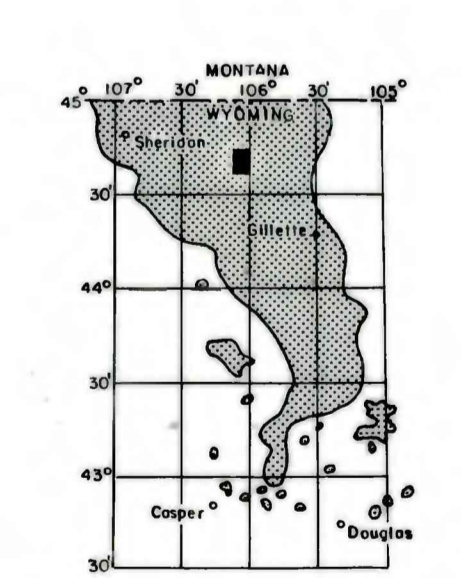


EXPLANATION

● 2548  
● 2670  
DRILL HOLE-Showing elevation  
at top of coal bed, in feet.

— 2800 —  
— 2750 —  
STRUCTURE CONTOURS-Drawn on top  
of coal bed. Contour interval  
50 feet. Datum is mean sea  
level.

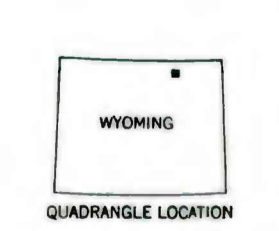
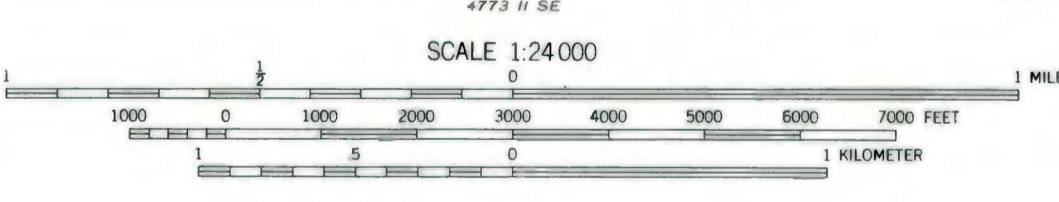
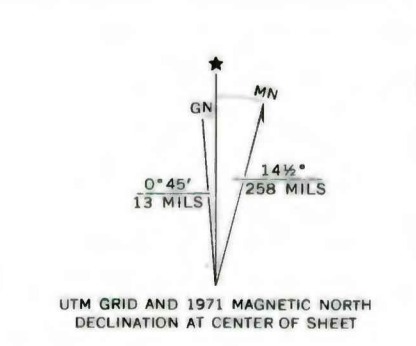
To convert feet to meters,  
multiply feet by 0.3048.



MAP SHOWING LOCATION OF THE  
ARVADA NE QUADRANGLE AND  
THE POWDER RIVER BASIN KNOWN  
RECOVERABLE COAL RESOURCE  
AREA (STIPPLED), WYOMING

4773 1 SW  
(JEWELL DRAW)

Base from U.S. Geological Survey, 1971



Compiled in 1980

This report has not been edited  
for conformity with U. S. Geological  
Survey editorial standards or  
stratigraphic nomenclature.

**COAL RESOURCE OCCURRENCE MAP OF THE ARVADA NE  
QUADRANGLE, SHERIDAN AND CAMPBELL COUNTIES, WYOMING**  
BY  
**IntraSearch**  
1980

PLATE 35  
STRUCTURE CONTOUR MAP OF  
COOK COAL BEDS