

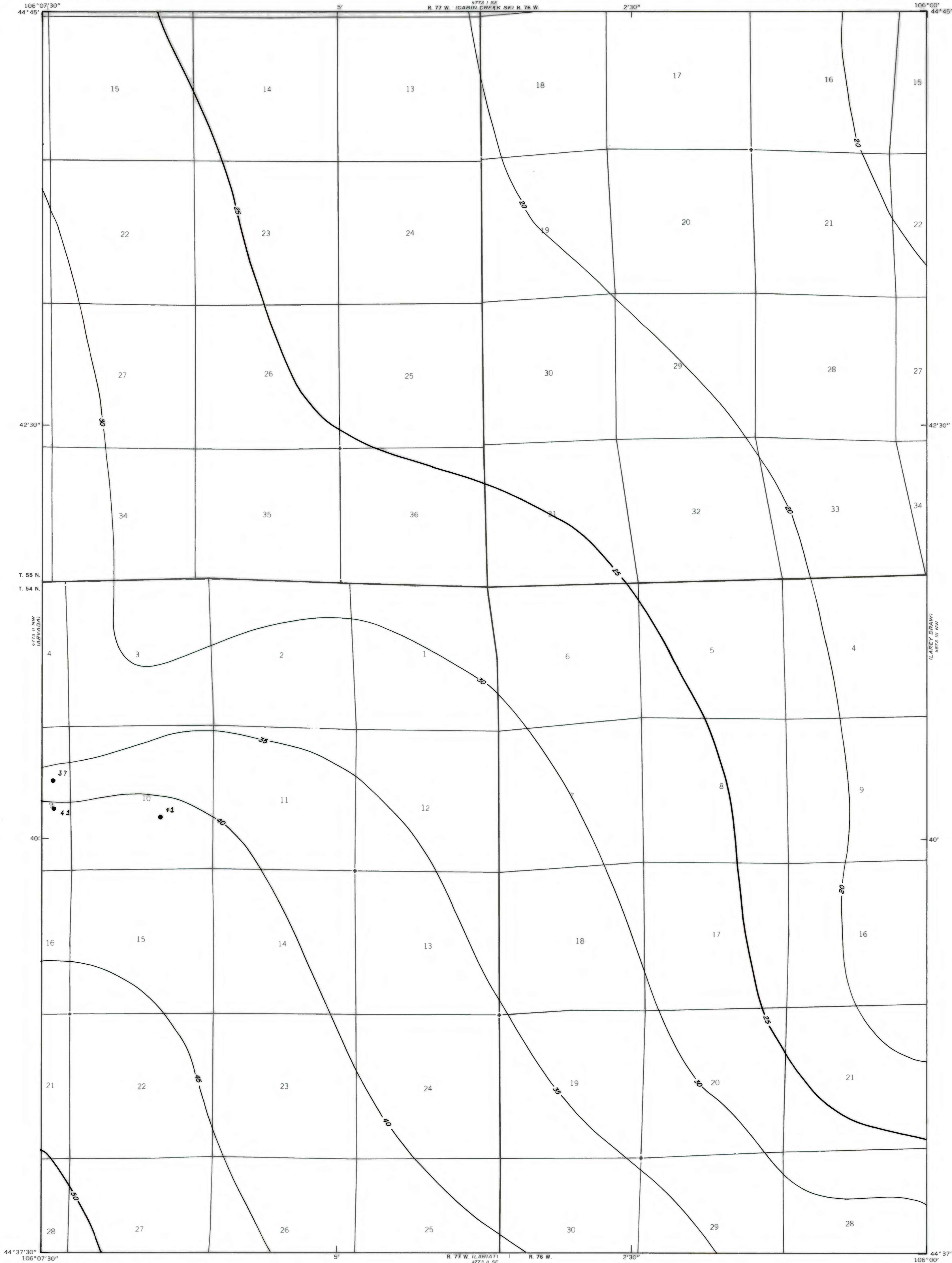
4773 (SE
FAYAN DRAW)

UNITED STATES
DEPARTMENT OF THE INTERIOR
GEOLOGICAL SURVEY

ARVADA NE QUADRANGLE
WYOMING
7.5 MINUTE SERIES (TOPOGRAPHIC)

OPEN FILE REPORT 79-167
PLATE 39 OF 55

4873 (SW
WELLS DRAW)

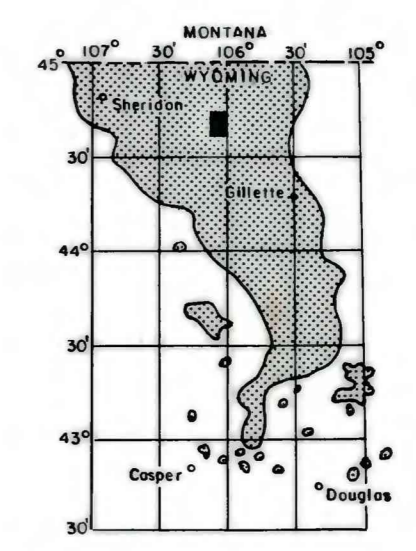


EXPLANATION

● 37
DRILL HOLE-Showing coal thickness
in feet.

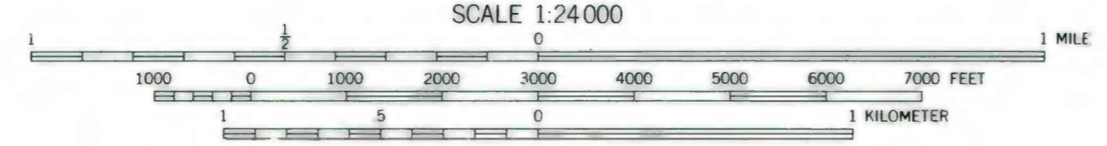
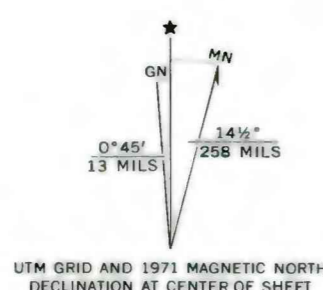
— 20 —
— 25 —
ISOPACHS OF COAL BED-Showing
thickness in feet. Isopach
interval 5 feet.

To convert feet to meters,
multiply feet by 0.3048.



MAP SHOWING LOCATION OF THE
ARVADA NE QUADRANGLE AND
THE POWDER RIVER BASIN KNOWN
RECOVERABLE COAL RESOURCE
AREA (STIPPLED), WYOMING

4773 (SW
WELLS DRAW)



Compiled in 1980

COAL RESOURCE OCCURRENCE MAP OF THE ARVADA NE
QUADRANGLE, SHERIDAN AND CAMPBELL COUNTIES, WYOMING

BY
IntraSearch
1980

This report has not been edited
for conformity with U. S. Geological
Survey editorial standards or
stratigraphic nomenclature.

PLATE 39
ISOPACH MAP OF
WALL COAL BEDS