

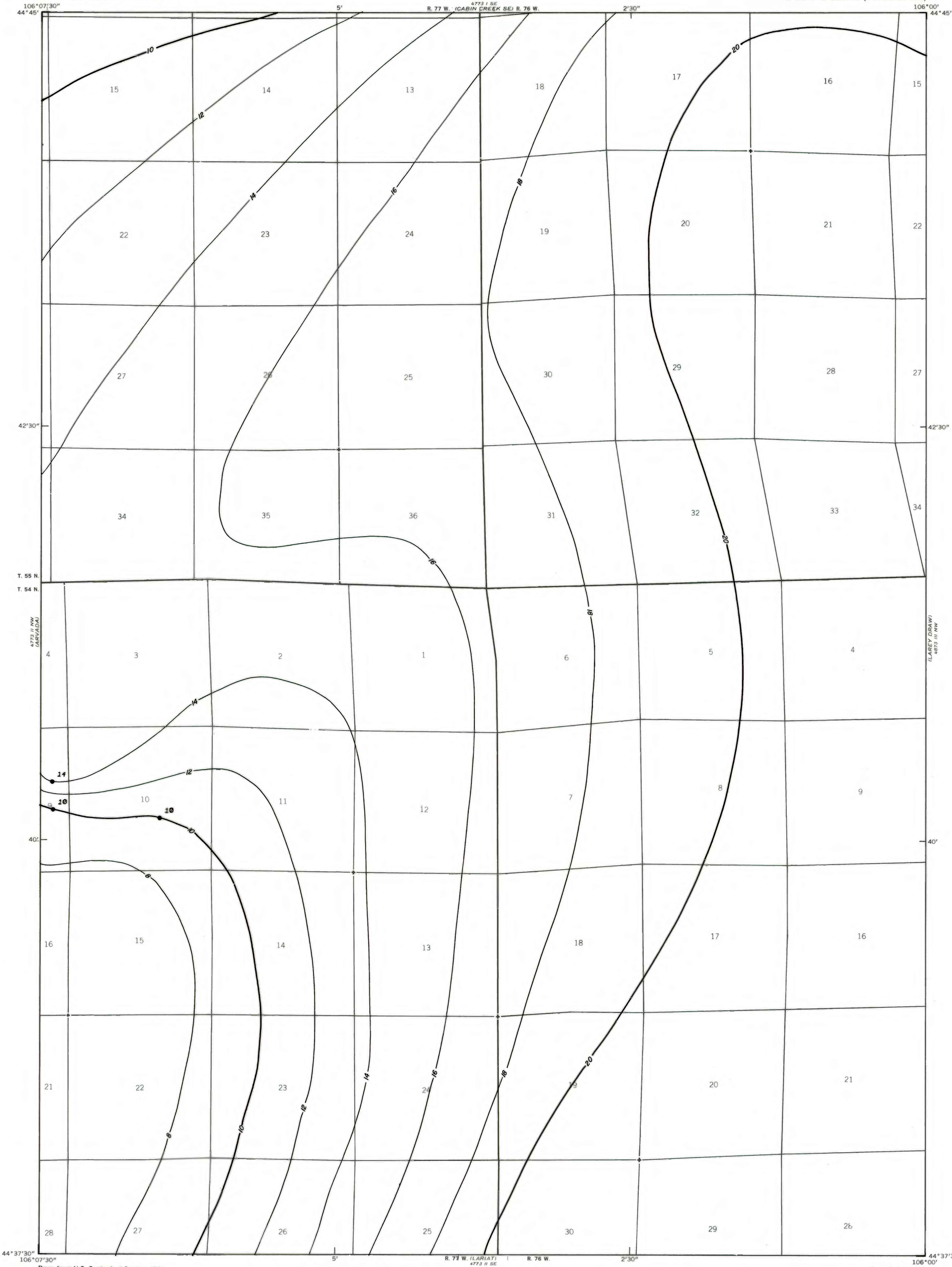
4773 SW  
FAVON DRAW

UNITED STATES  
DEPARTMENT OF THE INTERIOR  
GEOLOGICAL SURVEY

ARVADA NE QUADRANGLE  
WYOMING  
7.5 MINUTE SERIES (TOPOGRAPHIC)

OPEN FILE REPORT 79-167  
PLATE 44 OF 55

4773 SW  
RELINE DRAW

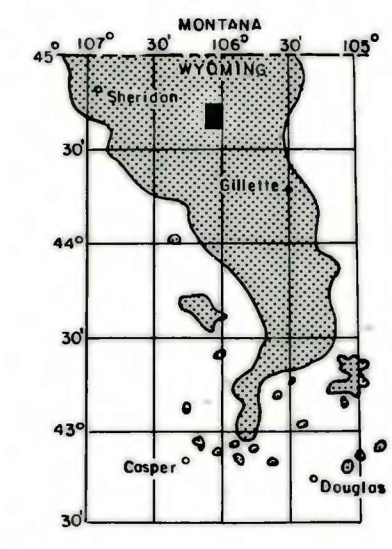


EXPLANATION

● 14  
DRILL HOLE-Showing coal thickness  
in feet.

— 18 —  
— 20 —  
ISOPACHS OF COAL BED-Showing  
thickness in feet. Isopach  
interval 2 feet.

To convert feet to meters,  
multiply feet by 0.3048.

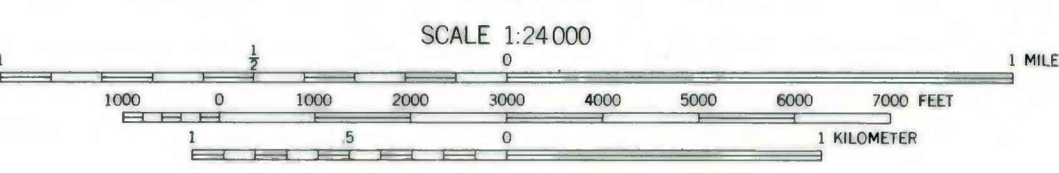
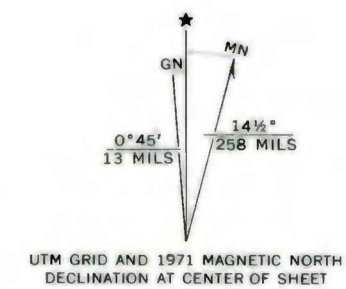


MAP SHOWING LOCATION OF THE  
ARVADA NE QUADRANGLE AND  
THE POWDER RIVER BASIN KNOWN  
RECOVERABLE COAL RESOURCE  
AREA (STIPPLED), WYOMING

4773 SW  
JEWELL DRAW

Base from U.S. Geological Survey, 1971

Compiled in 1980



**COAL RESOURCE OCCURRENCE MAP OF THE ARVADA NE  
QUADRANGLE, SHERIDAN AND CAMPBELL COUNTIES, WYOMING**

BY  
**intraSearch**  
1980

PLATE 44  
ISOPACH MAP OF  
PAWNEE COAL ZONE

This report has not been edited  
for conformity with U. S. Geological  
Survey editorial standards or  
stratigraphic nomenclature.