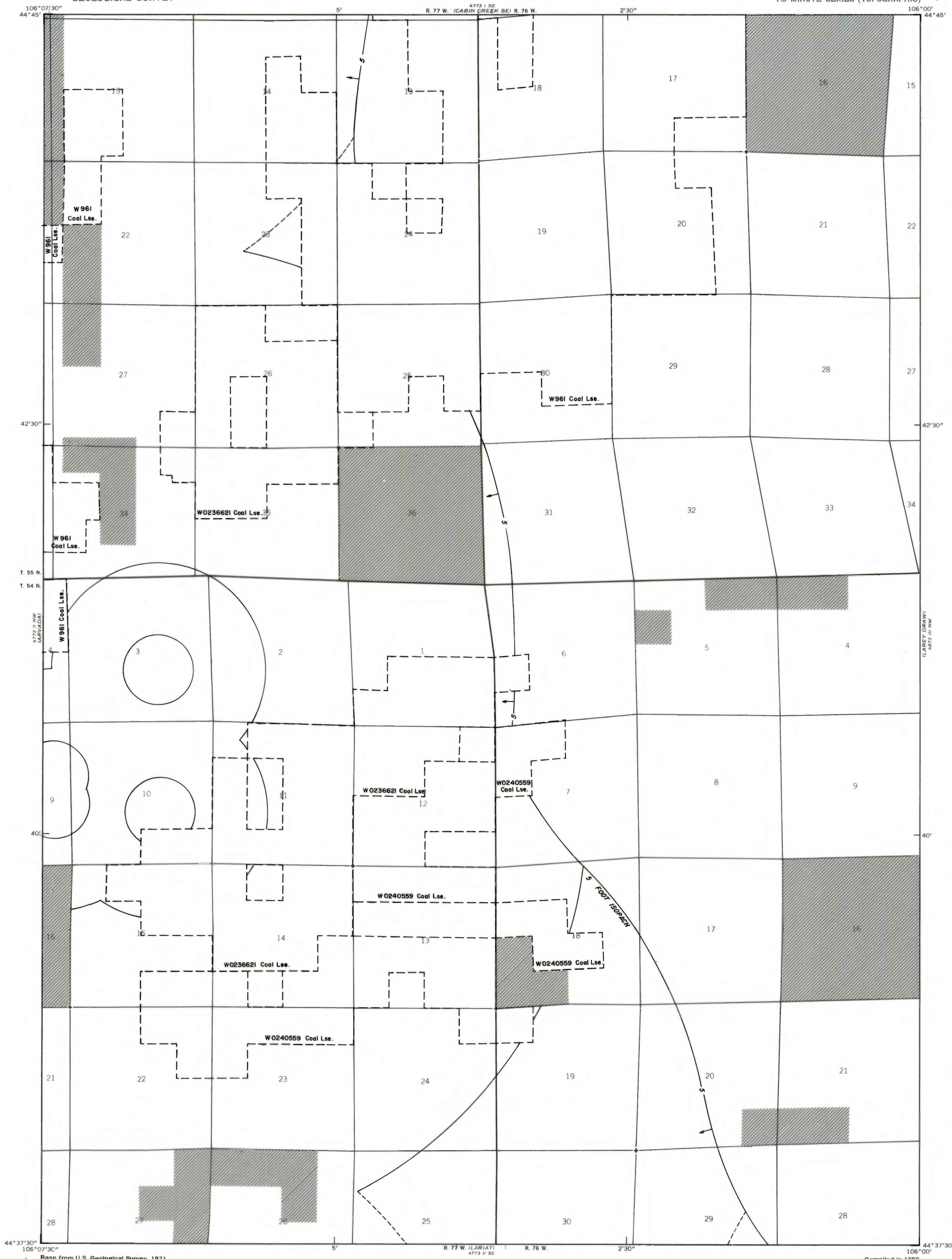


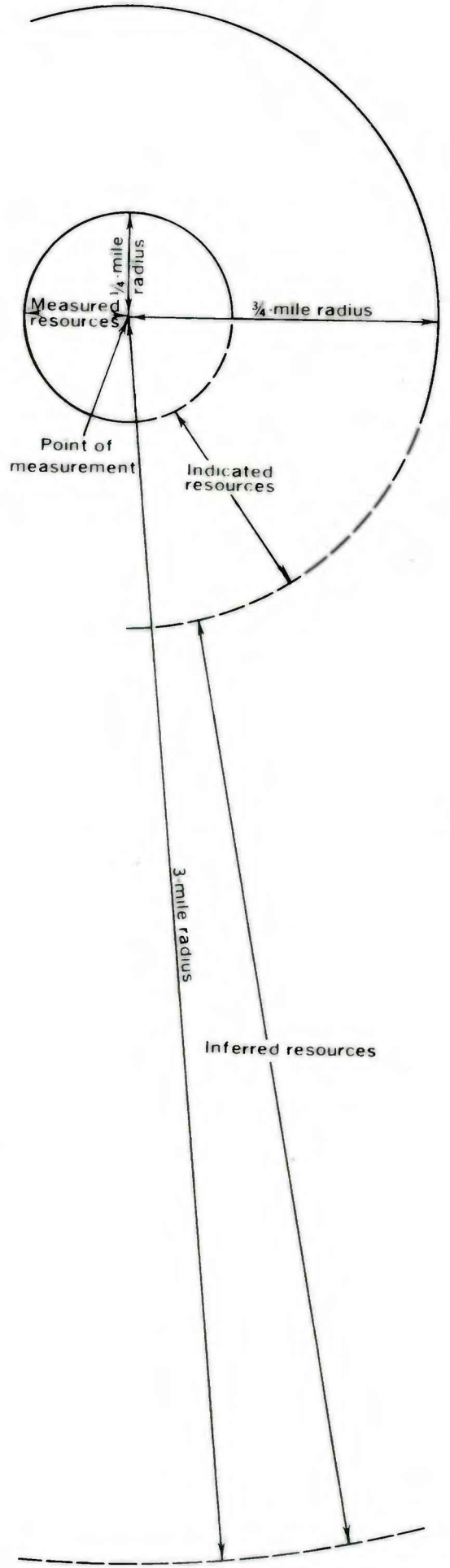
5221 SW
(LAWRY DRAW)



EXPLANATION

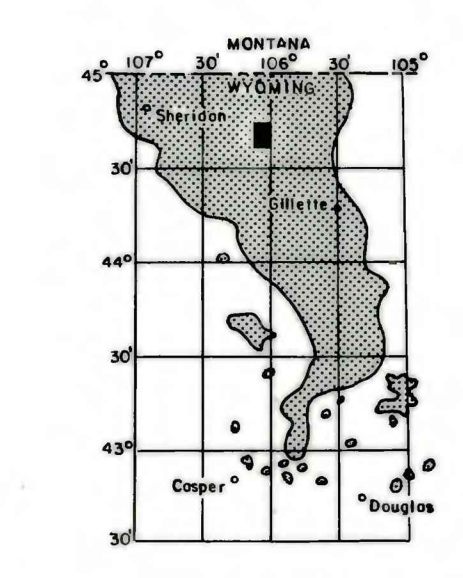
NON-FEDERAL COAL LAND-Coal tonnages not evaluated.

COAL LEASE-Coal Lse. Coal tonnages not evaluated.



BOUNDARY LINES-Enclosing areas of measured, indicated and inferred coal resources of the coal bed. Dashed where projected from adjacent quadrangles. Hypothetical resources beyond 3 miles.

To convert miles to kilometers, multiply miles by 1.609.

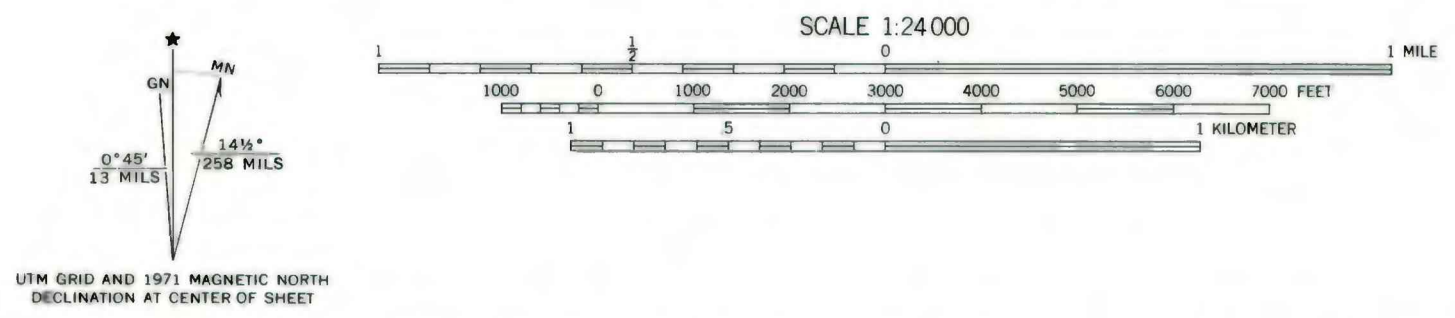


MAP SHOWING LOCATION OF THE ARVADA NE QUADRANGLE AND THE POWDER RIVER BASIN KNOWN RECOVERABLE COAL RESOURCE AREA (STIPPLED), WYOMING

14921 SW
(JEWELL DRAW)

Base from U.S. Geological Survey, 1971

Compiled in 1980



COAL RESOURCE OCCURRENCE MAP OF THE ARVADA NE QUADRANGLE, SHERIDAN AND CAMPBELL COUNTIES, WYOMING
BY
IntraSearch
1980

This report has not been edited for conformity with U. S. Geological Survey editorial standards or stratigraphic nomenclature.

PLATE 52
AREAL DISTRIBUTION OF IDENTIFIED RESOURCES OF MOYER-LOCAL-OEDEKOVEN COAL BED COMPOSITE