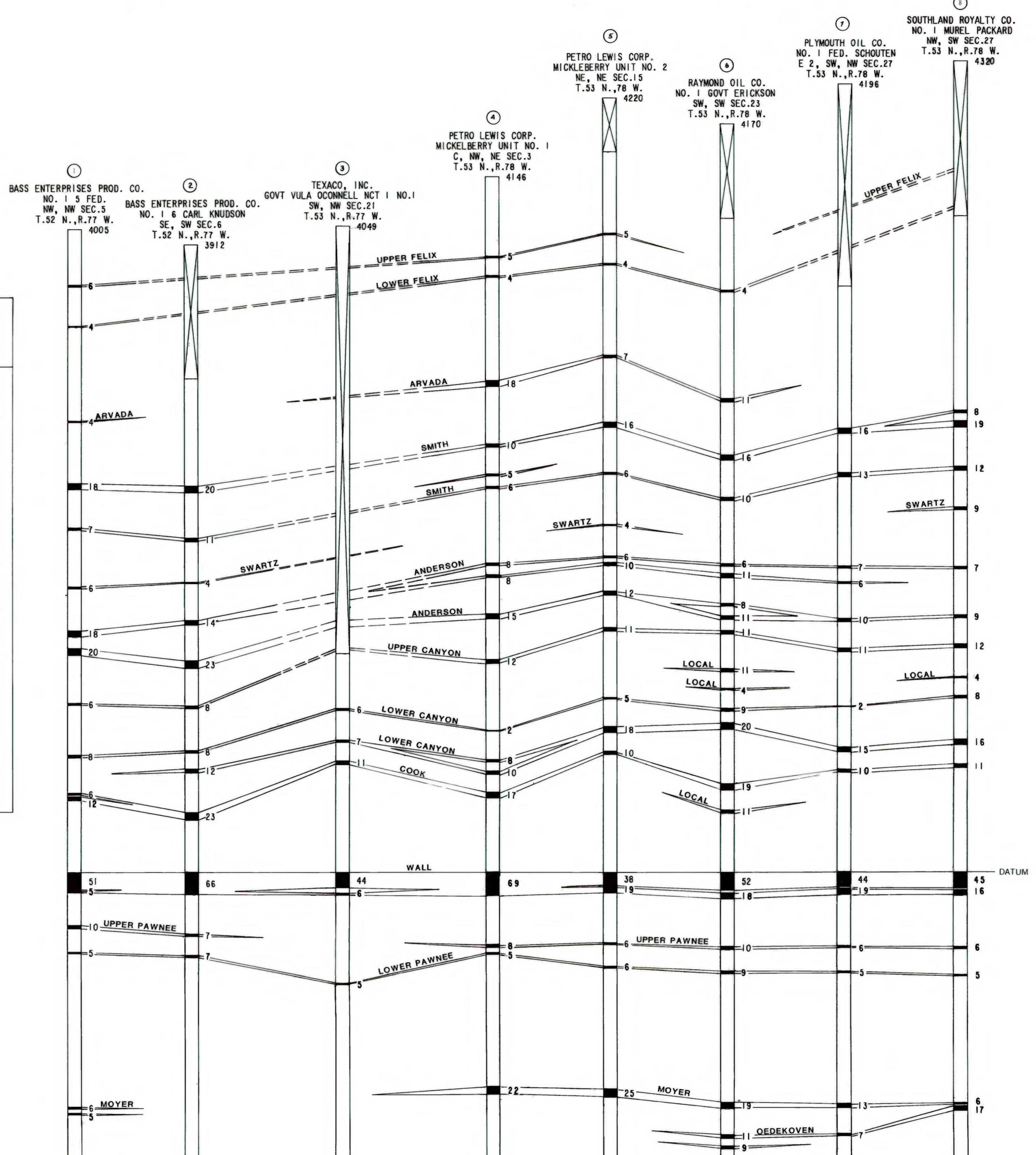
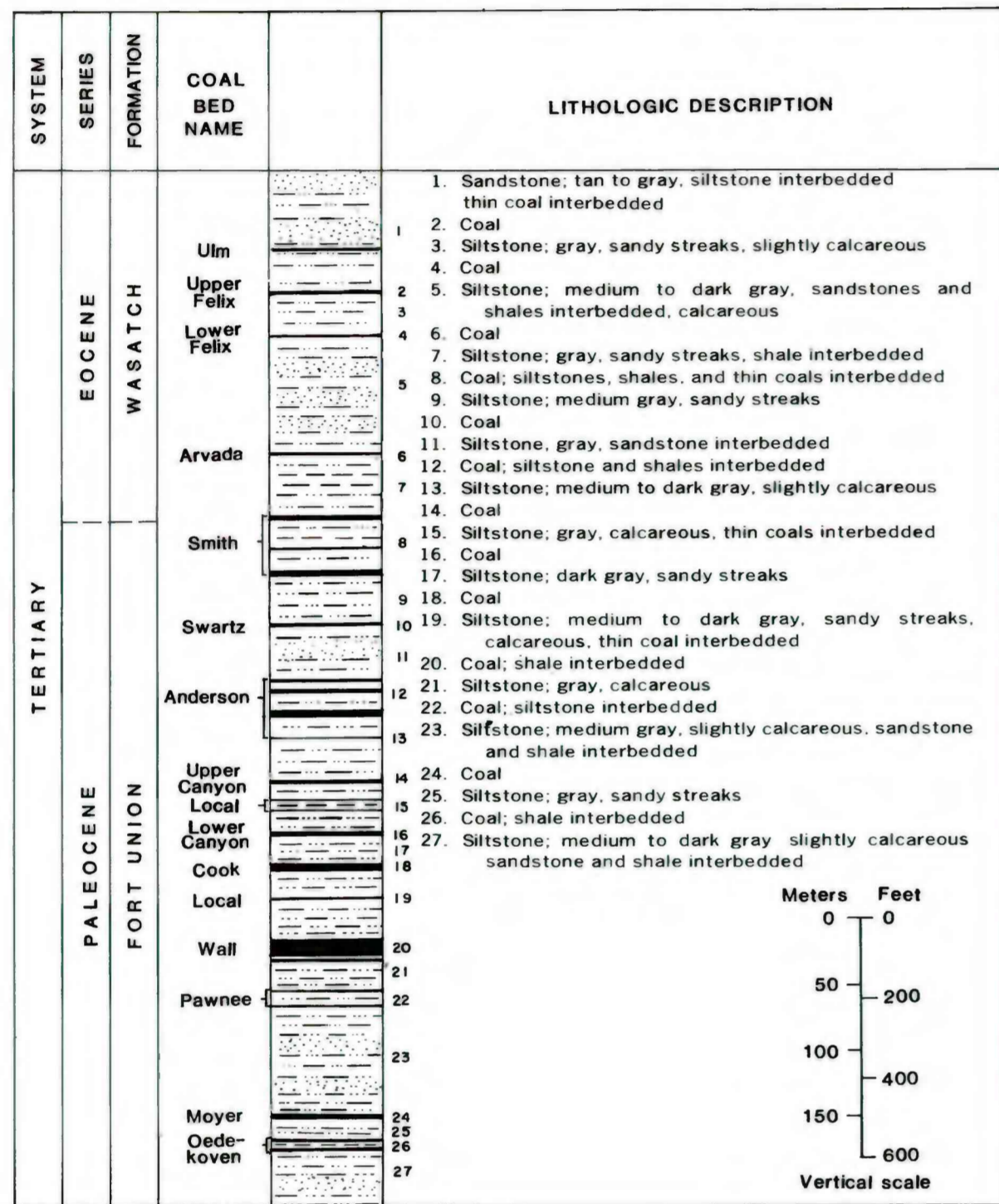


CORRELATION OF COAL BEDS IN DRILL HOLES

UNITED STATES
DEPARTMENT OF THE INTERIOR
GEOLOGICAL SURVEY

T. 52 N., R. 77 W. T. 53 N., R. 77 W. T. 53 N., R. 78 W.

COMPOSITE COLUMNAR SECTION



EXPLANATION

- Index number
- Company and well name
- Well location
- Elevation of drill hole at surface
- No record
- Rock interval
- Coal bed, showing thickness in feet

COAL BED NAMES

- Ulm
- Upper Felix
- Lower Felix
- Arvada
- Smith Zone
- Swartz
- Anderson Zone
- Upper Canyon
- Lower Canyon
- Cook
- Wall
- Upper Pawnee
- Lower Pawnee
- Moyer
- Oedehoven
- Local

Dashed lines, indicating the projection of coal beds through drill sites where no record (NR) intervals exist, are for correlation purposes only and are not intended to portray either the structural elevation or the thickness of these coal beds.

Vertical scale

Meters: 0, 25, 50, 75, 100, 125, 150, 200, 300, 400, 500, 600

Feet: 0, 25, 50, 75, 100, 125, 150, 200, 300, 400, 500, 600

PLATE 3
COAL DATA SHEET

COAL RESOURCE OCCURRENCE MAP OF THE JEWELL DRAW QUADRANGLE, SHERIDAN AND JOHNSON COUNTIES, WYOMING
BY
IntraSearch
1980

OPEN FILE REPORT 79-168
PLATE 3 OF 45
This report has not been edited for conformity with U. S. Geological Survey editorial standards or stratigraphic nomenclature.