
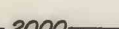
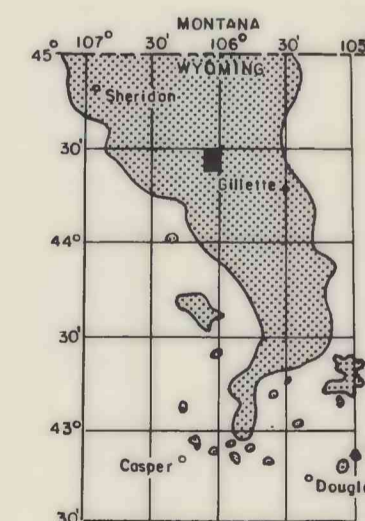


EXPLANATION


DRILL HOLE—Showing thickness of overburden, in feet, from the surface to top of coal bed. Lower number indicates interburden thickness, in feet, between upper and lower splits of coal bed.


OVERBURDEN ISOPACH—Showing thickness of overburden, in feet, from the surface to the top of the coal bed. Isopach interval 250 feet.

To convert feet to meters,
multiply feet by 0.3048.



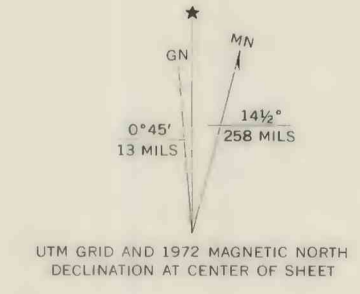
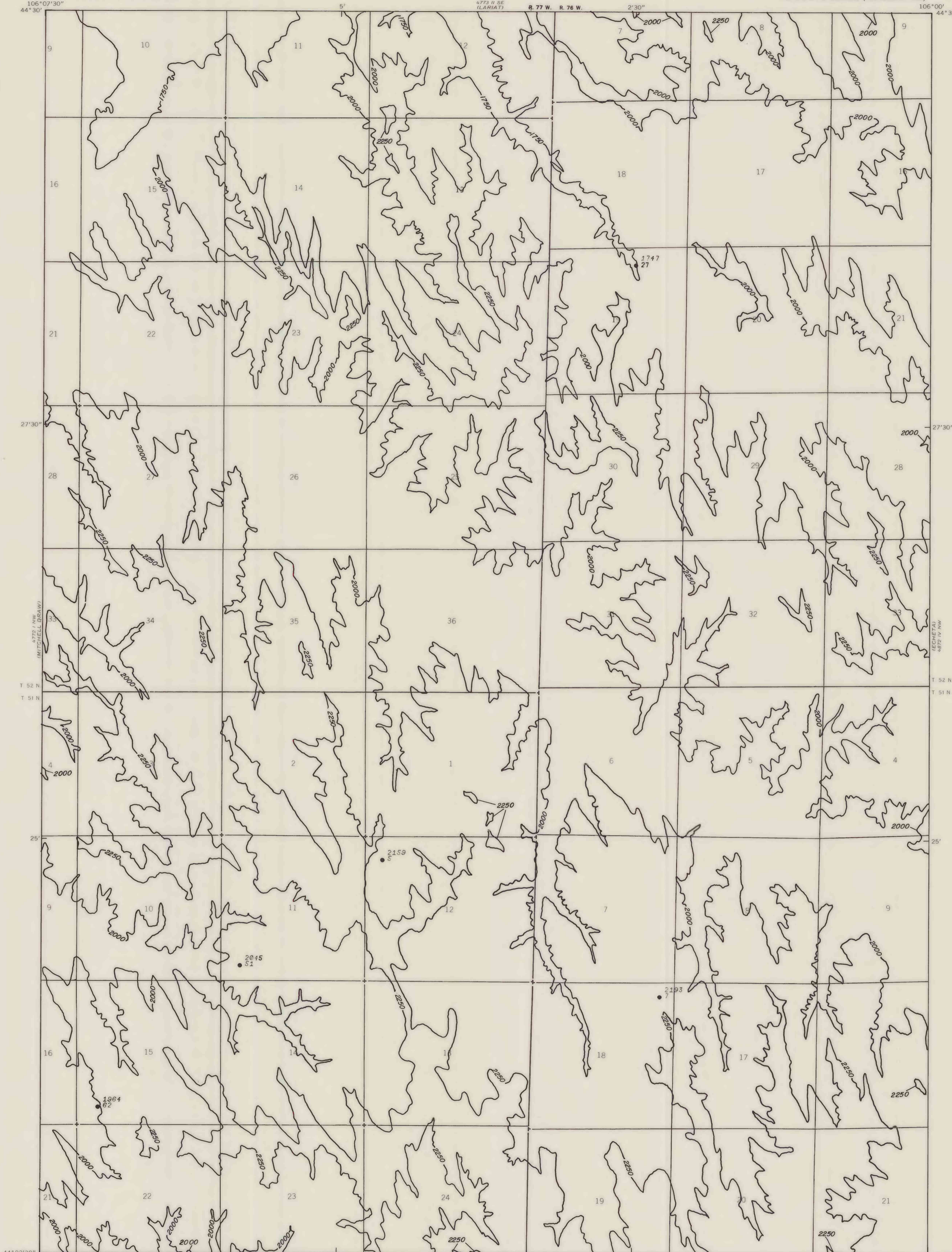
MAP SHOWING LOCATION OF THE LIVINGSTON DRAW QUADRANGLE AND THE POWDER RIVER BASIN KNOWN RECOVERABLE COAL RESOURCE AREA (STIPPLED), WYOMING

This report has not been edited for conformity with U. S. Geological Survey editorial standards or stratigraphic nomenclature.

COAL RESOURCE OCCURRENCE MAP OF THE LIVINGSTON DRAW QUADRANGLE, JOHNSON AND CAMPBELL COUNTIES, WYOMING

BY
IntraSearch
1980

PLATE 36
ISOPACH MAP OF OVERBURDEN OF
UPPER AND LOWER PAWNEE COAL BEDS



UTM GRID AND 1972 MAGNETIC NORTH DECLINATION AT CENTER OF SHEET

Base from U.S. Geological Survey, 1972
ISOMERVILLE FLATS WEST
77° 15' W
44° 22' 30" N

Compiled in 1980