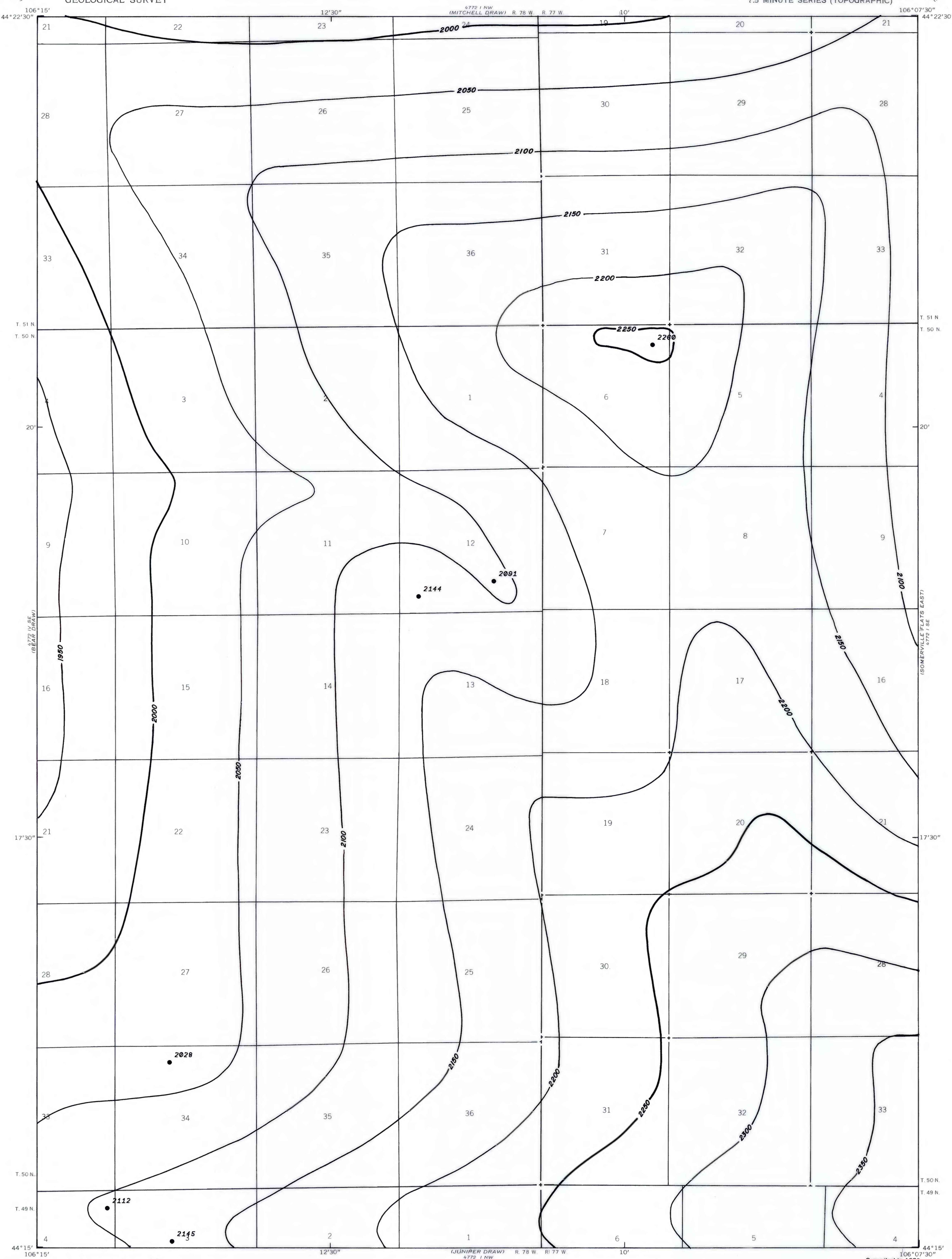


(PLOT OF DRAW)
4772 1 NW
44°22'30"

UNITED STATES
DEPARTMENT OF THE INTERIOR
GEOLOGICAL SURVEY

SOMERVILLE FLATS WEST QUADRANGLE
WYOMING—JOHNSON CO.
7.5 MINUTE SERIES (TOPOGRAPHIC)

OPEN FILE REPORT 79-172
PLATE 30 OF 40

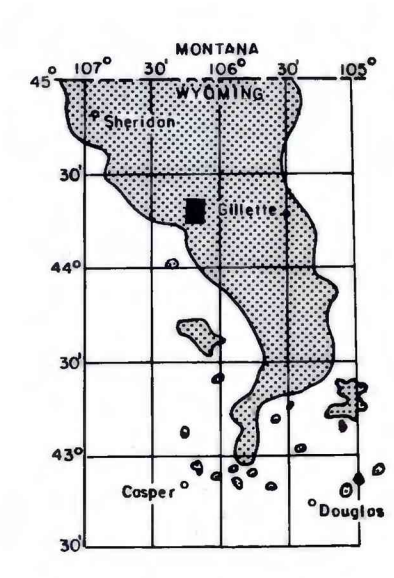


EXPLANATION

● 2144
DRILL HOLE—Showing elevation
at top of coal bed, in feet.

— 2200 —
— 2250 —
STRUCTURE CONTOURS—Drawn on top
of coal bed. Contour interval
50 feet. Datum is mean sea
level.

To convert feet to meters,
multiply feet by 0.3048.

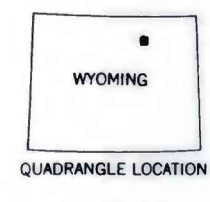
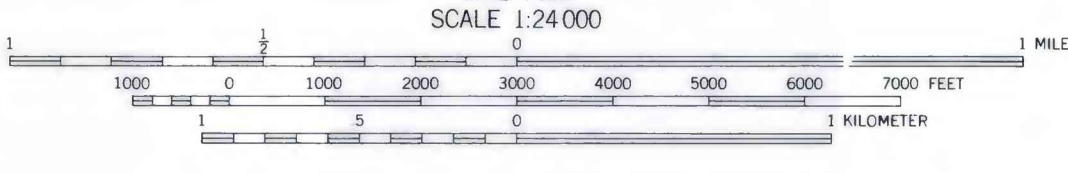
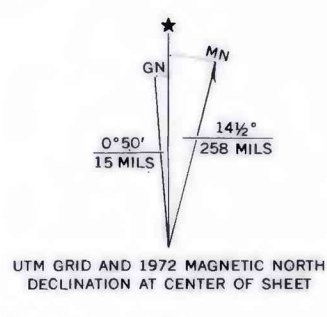


MAP SHOWING LOCATION OF THE
SOMERVILLE FLATS WEST QUAD-
RANGLE AND THE POWDER RIVER
BASIN KNOWN RECOVERABLE COAL
RESOURCE AREA (STIPPLED),
WYOMING

This report has not been edited
for conformity with U. S. Geological
Survey editorial standards or
stratigraphic nomenclature.

(PLOT OF DRAW)
4772 1 NW
44°22'30"

Base from U.S. Geological Survey, 1972



COAL RESOURCE OCCURRENCE MAP OF THE SOMERVILLE FLATS WEST
QUADRANGLE, JOHNSON COUNTY, WYOMING

BY
IntraSearch
1980

PLATE 30
STRUCTURE CONTOUR MAP OF
PAWNEE COAL ZONE