

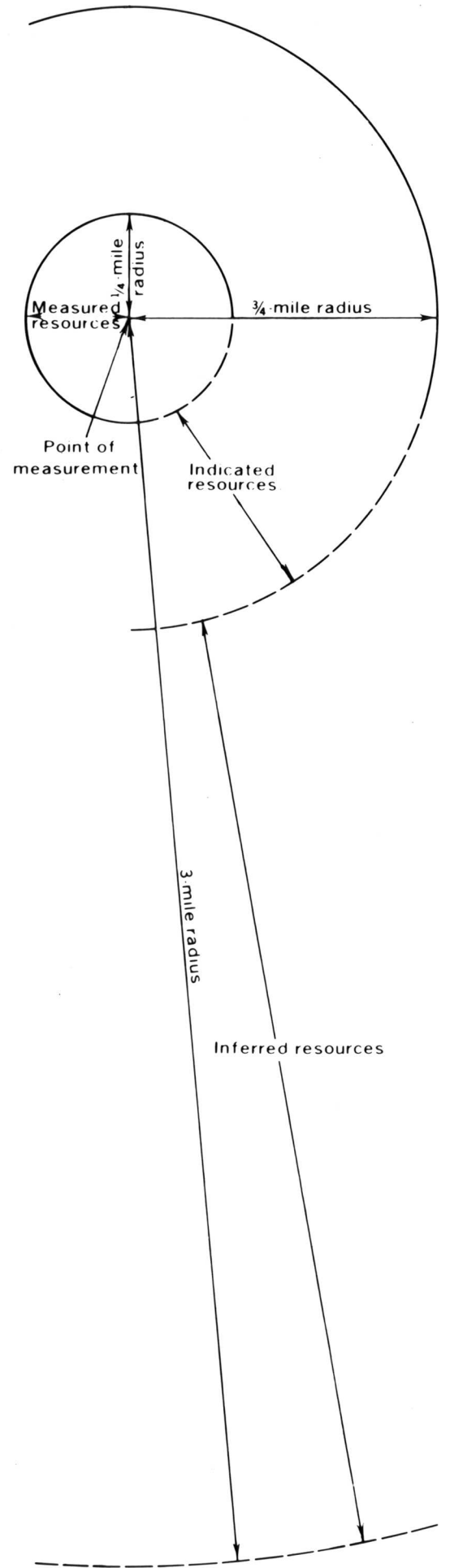


EXPLANATION

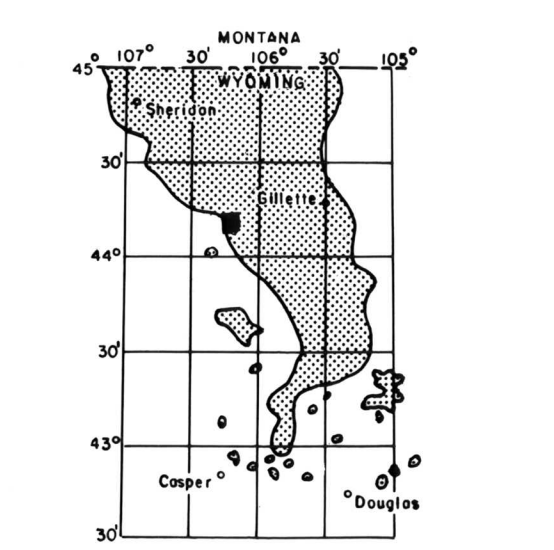
 NON-FEDERAL COAL LAND—Coal tonnages not evaluated.

 KRCRA  
KNOWN RECOVERABLE COAL RESOURCE AREA—KRCRA



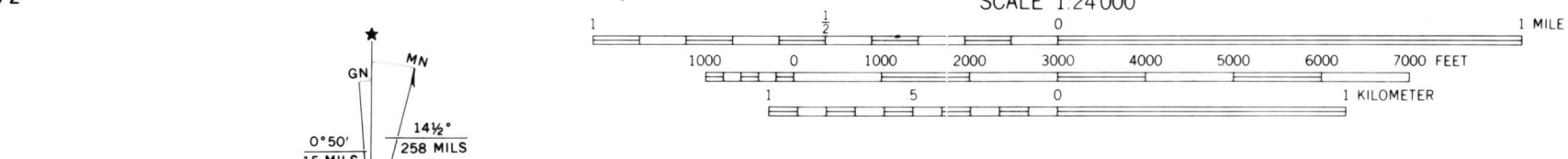
BOUNDARY LINES—Enclosing areas of measured, indicated and inferred coal resources of the coal bed. Dashed where projected from adjacent quadrangles.

To convert miles to kilometers, multiply miles by 1.609.



MAP SHOWING LOCATION OF THE JUNIPER DRAW QUADRANGLE AND THE POWDER RIVER BASIN KNOWN RECOVERABLE COAL RESOURCE AREA (STIPPLED), WYOMING

This report has not been edited for conformity with U. S. Geological Survey editorial standards or stratigraphic nomenclature.



COAL RESOURCE OCCURRENCE MAP OF THE JUNIPER DRAW  
QUADRANGLE, JOHNSON COUNTY, WYOMING

BY  
**IntraSearch**  
1980

PLATE 17  
AREAL DISTRIBUTION OF  
IDENTIFIED RESOURCES OF  
WYODAK COAL ZONE

Juniper Draw  
Wyodak ADIR  
Plate 17  
*John R.*