

EXPLANATION

- GL 6330
- NR 300.0
- R 1846.0
- C 4.0(L)
- R 158.0
- C 3.0(L)
- R 159.0
- C 2.0(L)
- C 3.0(L)
- R 78.0
- C 5.0(L)
- R 2463.0
- TD 5019.0

OIL AND GAS TEST HOLE - Showing drill-hole data, in feet. Letter designates name of coal bed as listed below. Index number refers to hole on plate 3 of CRO map.

- 77 R 3+
- C 1.0(L)
- R 7.1
- C 4.2+(L)
- NR

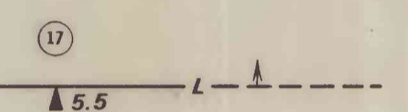
OUTCROP MEASURED SECTION - Showing rock interval and thickness of coal, in feet. Letter designates name of coal bed as listed below. Index number refers to section on plate 3 of CRO map.

- GL - Ground level elevation
- R - Rock interval
- C - Coal interval
- NR - No record of lithology
- TD - Total depth

DRILL HOLE AND MEASURED SECTION DATA SYMBOLS.

L - Local lenticular coal bed

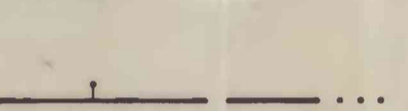
COAL BED SYMBOL AND NAME



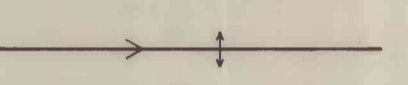
TRACE OF COAL BED OUTCROP - Showing thickness of coal in feet, measured at triangle. Letter designates name of coal bed as listed above. Arrow points toward the coal bearing area. Index number refers to section on plate 3 of CRO map. Dashed line indicates inferred outcrop.



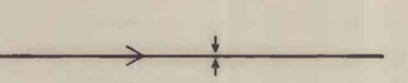
BURNED AND CLINKERED COAL BED - Showing area of baked and fused rock (v symbol).



FAULT - Dashed where approximately located; bar and ball on downthrown side; dotted where concealed.



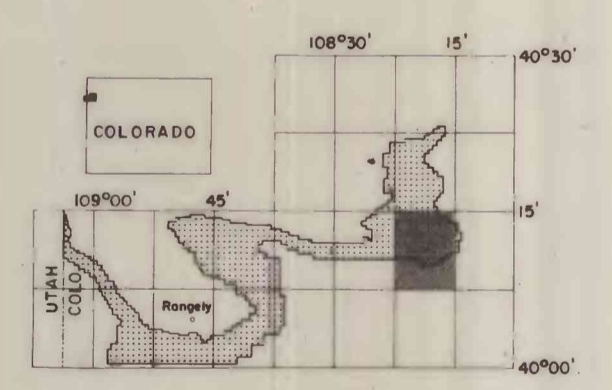
ANTICLINE - Showing axial trace and direction of plunge.



SYNCLINE - Showing axial trace and direction of plunge.

STRIKE AND DIP OF BEDS

To convert feet to meters, multiply feet by 0.3048



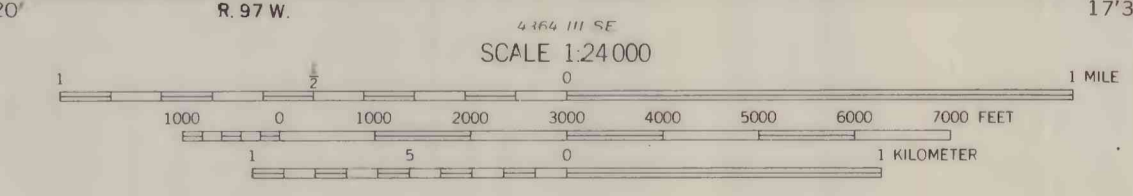
MAP SHOWING LOCATION OF THE SMIZER GULCH QUADRANGLE (SHADED) AND THE LOWER WHITE RIVER KNOWN RECOVERABLE COAL RESOURCE AREA (STIPPLED).

This report has not been edited for conformity with Geological Survey editorial standards or stratigraphic nomenclature.

COAL RESOURCE OCCURRENCE MAP OF THE SMIZER GULCH QUADRANGLE,
RIO BLANCO AND MOFFAT COUNTIES, COLORADO

BY
AAA ENGINEERING AND DRAFTING, INC.
1980

Base from U.S. Geological Survey, 1966



Geology from U.S.G.S. geologic map of the Smizer Gulch Quadrangle, Rio Blanco and Moffat Counties, Colorado (GQ-1131) by W. J. Hall Jr.

Compiled in 1979

