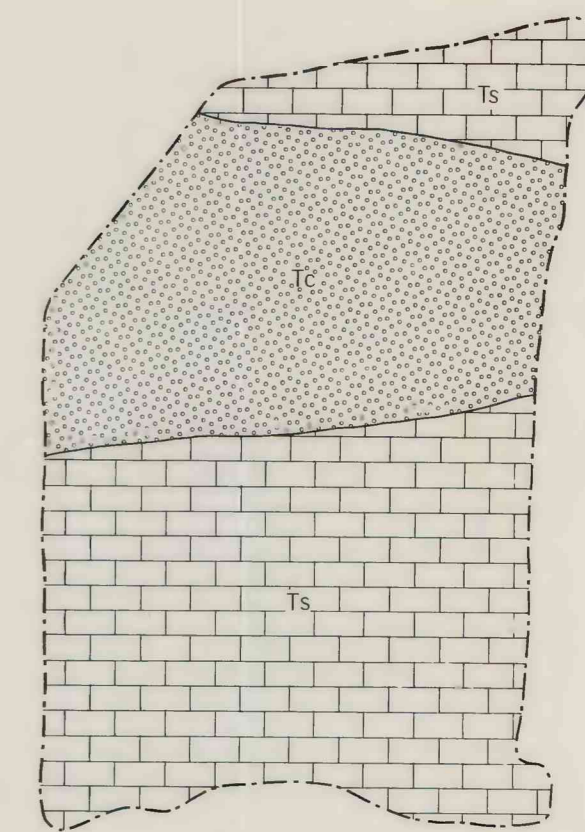
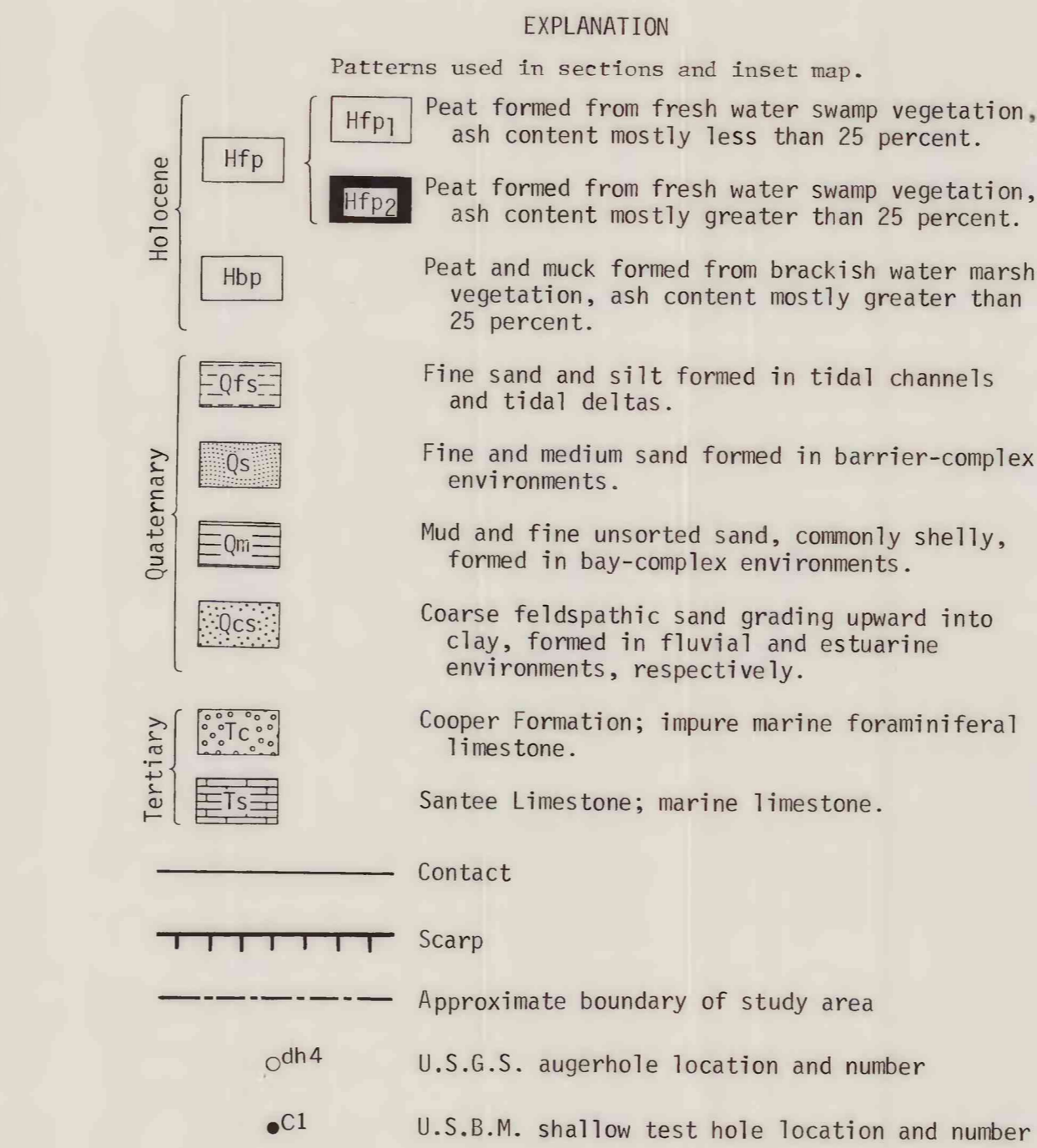
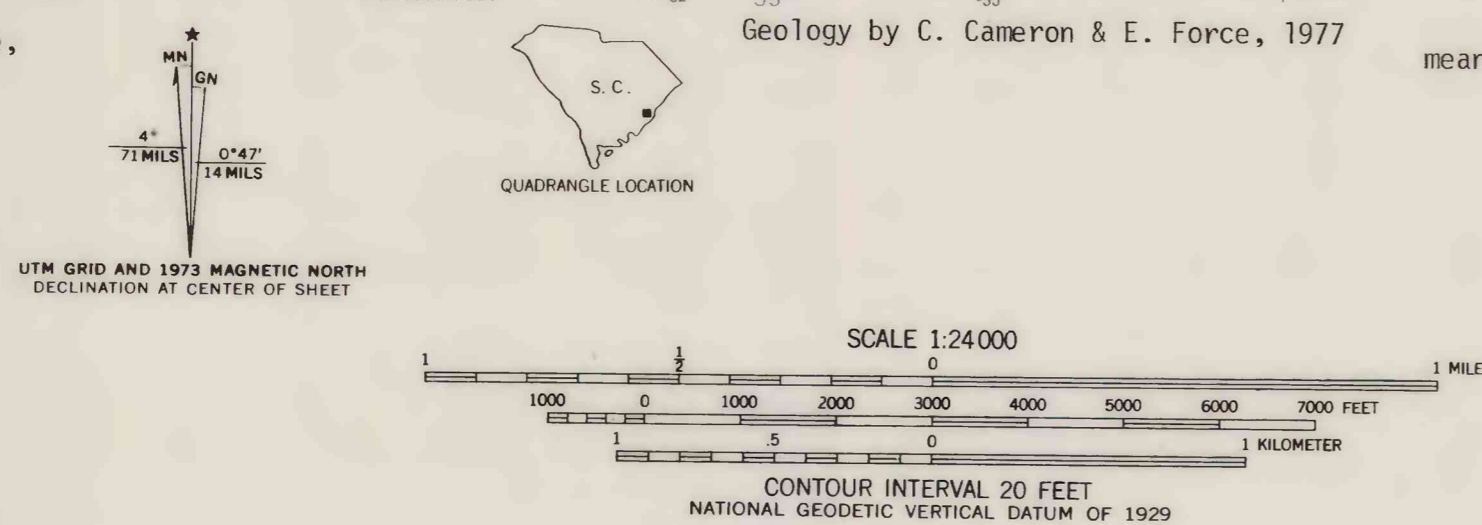
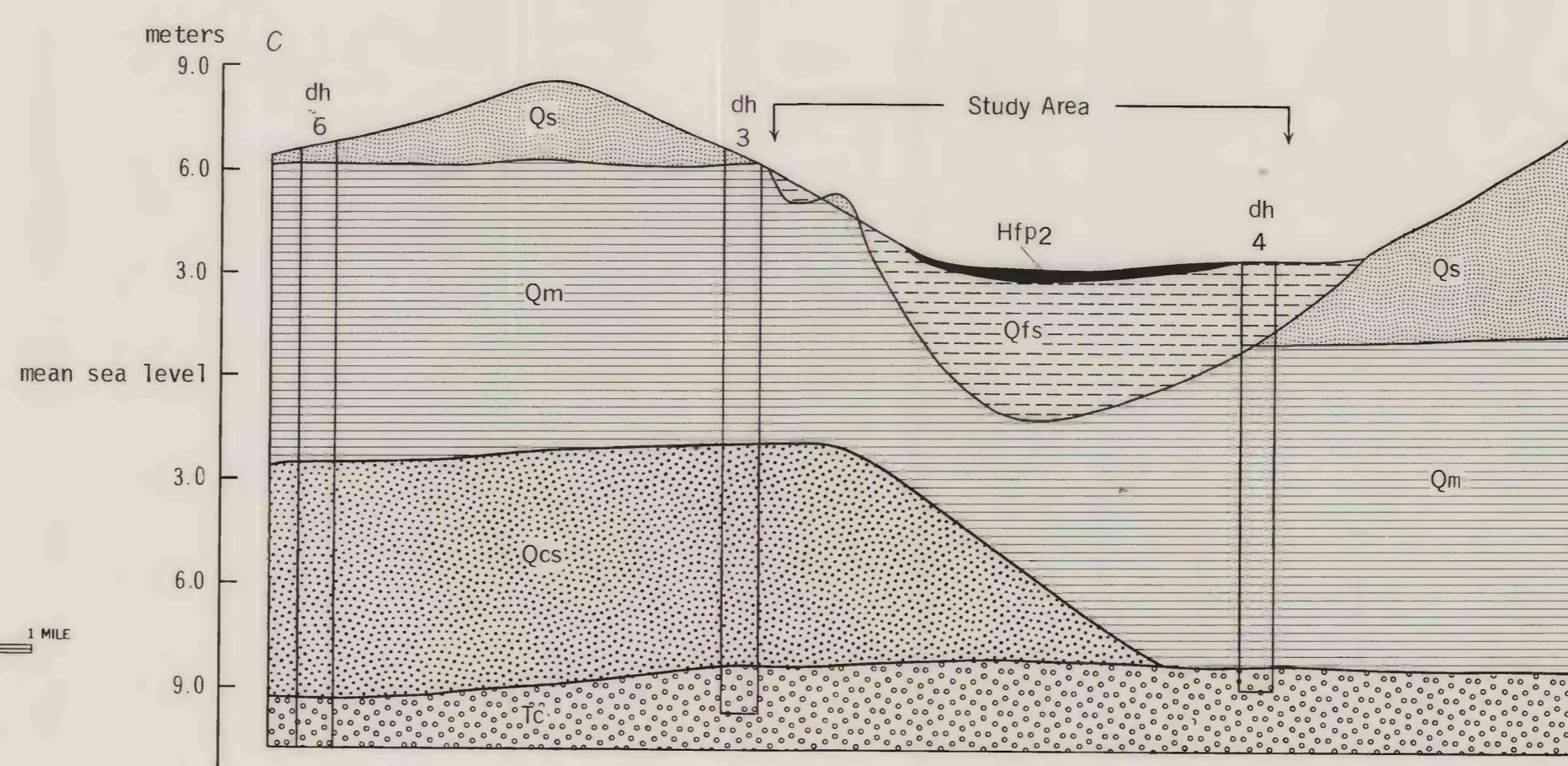
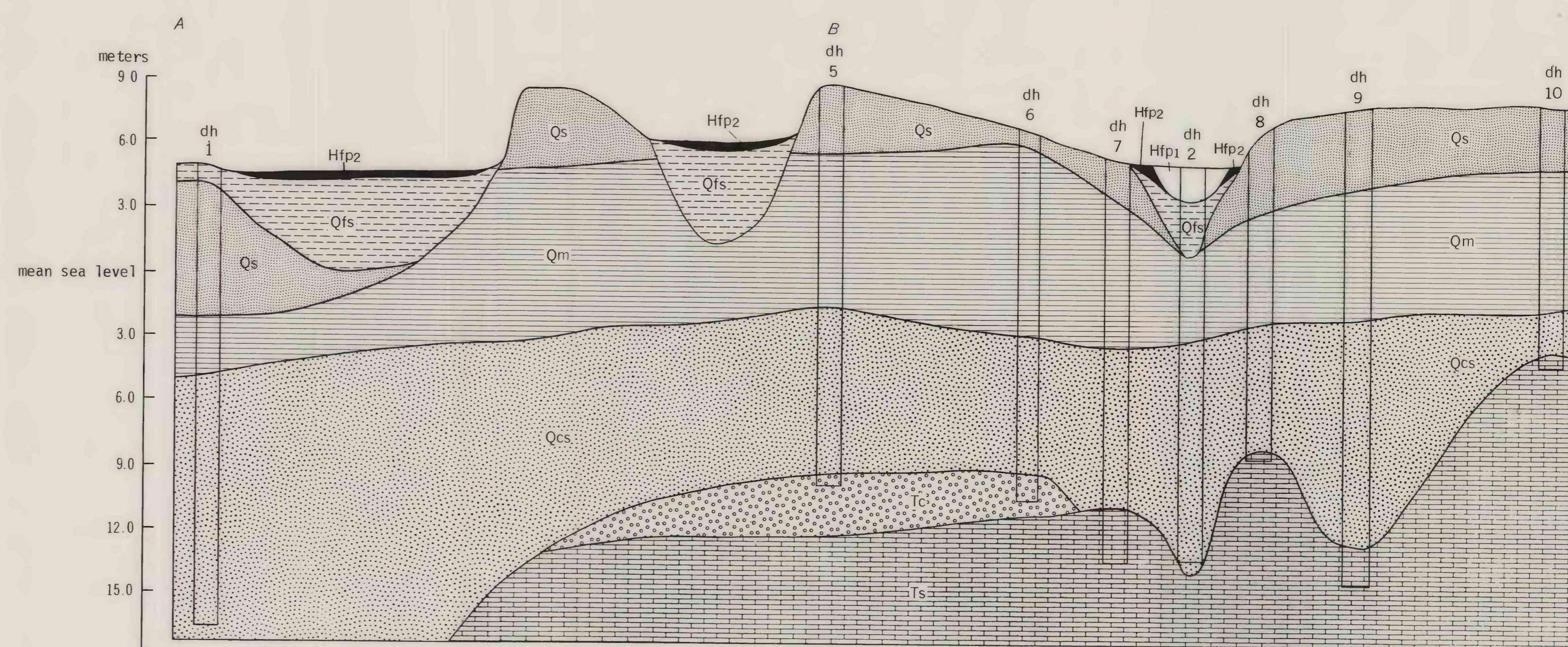
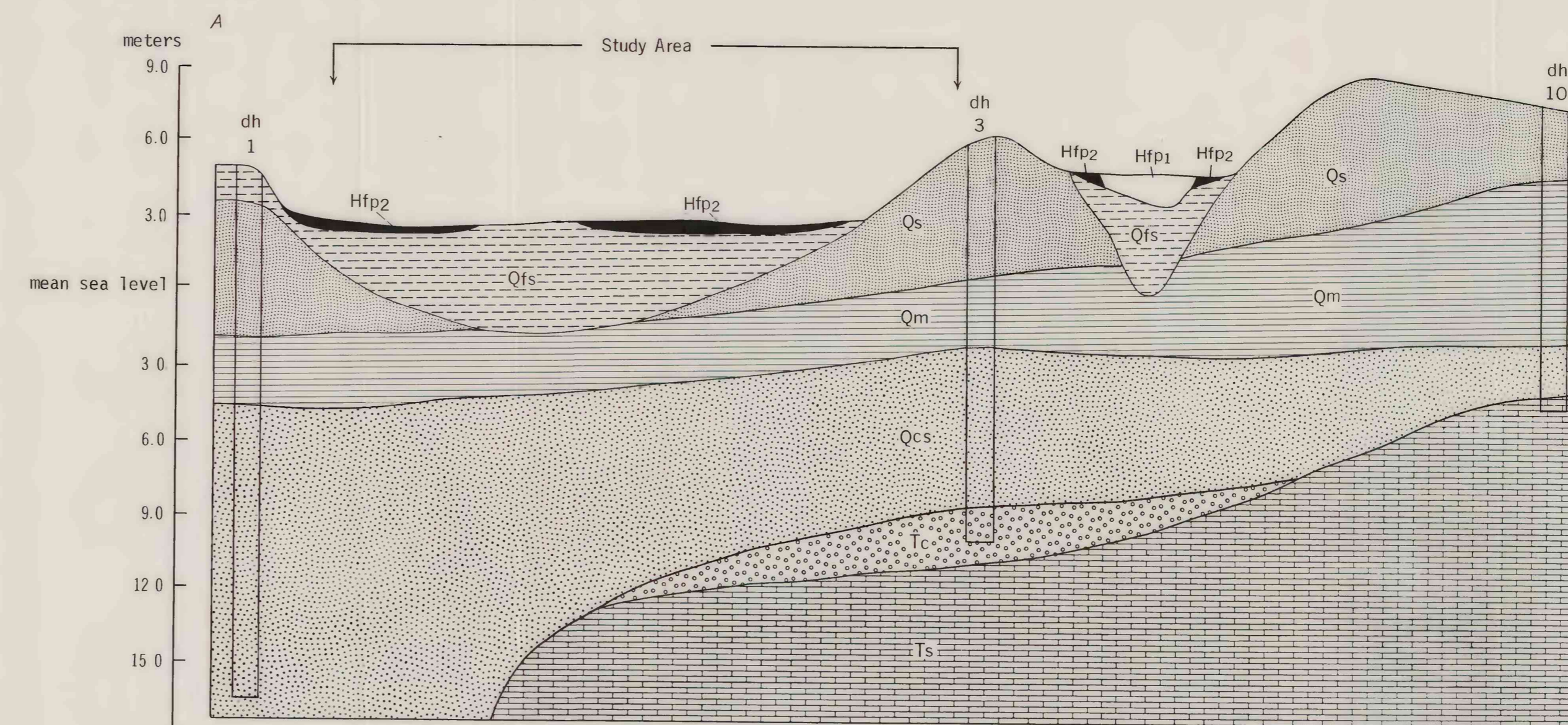


Base after Awendaw quadrangle,
U.S. Geological Survey

Geology by C. Cameron & E. Force, 1977



Inset map of Wambaw Swamp Wilderness Study Area showing inferred subsurface contacts of the Cooper Formation and Santee Limestone.



U.S. Geological Survey
OPEN FILE MAP
This map is preliminary and has not been edited for conformity with Geological Survey standards or nomenclature.

SURFICIAL GEOLOGIC MAP AND SECTIONS, WAMBAW SWAMP WILDERNESS STUDY AREA, CHARLESTON COUNTY, SOUTH CAROLINA

By
Cornelia C. Cameron, Eric R. Force and Gertrude Gazdik
1979