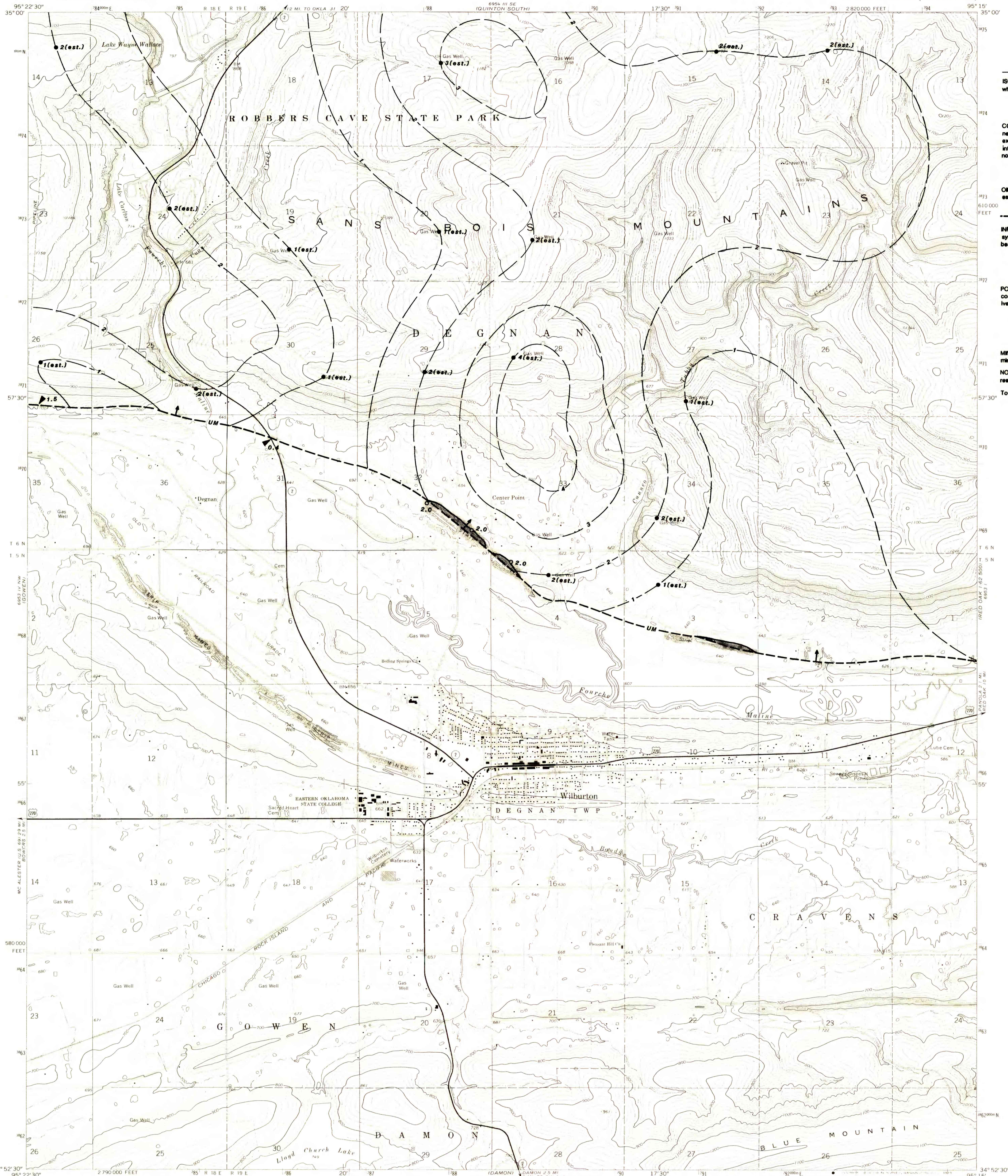


UNITED STATES
DEPARTMENT OF THE INTERIOR
GEOLOGICAL SURVEY

WILBURTON QUADRANGLE
OKLAHOMA-LATIMER CO.
7.5 MINUTE SERIES (TOPOGRAPHIC)

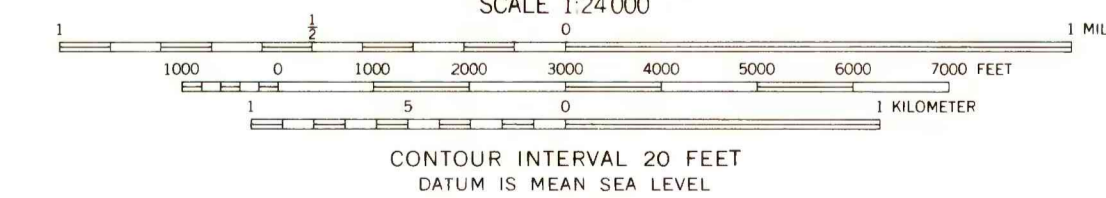
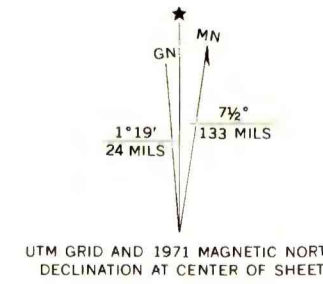


EXPLANATION

- 2 — ISOPACHS—Showing thickness of coal, in feet. Dashed where inferred. Isopach interval 1 foot (0.305m).
- 2.0 COAL TEST MEASUREMENT—Showing measured thickness of coal, in feet, in areas where the structure map exhibited dip less than 25°. Drill holes which do not intersect the coal or from which a coal thickness could not be determined are not shown.
- 2(est.) OIL AND GAS TEST HOLE—Showing thickness of coal estimated from well logs, in feet.
- U M — INFERRED TRACE OF COAL BED OUTCROP—Showing symbol of name of coal bed. Arrow points toward coal-bearing area.
- ▶ 2.3 POINT OF MEASUREMENT—Showing true thickness of coal, in feet, as measured at point of outcrop, irrespective of dip.
- MINE WORKINGS AND STRIPPED AREAS—Showing mined-out areas. Boundaries are approximately located.
- NOTE: Thickness reported to tenths of feet only when resolution of data permitted.
- To convert feet to meters, multiply feet by 0.3048.

Base from U.S. Geological Survey, 1971.
This map intended for land-use planning purposes only.

This report was prepared under contract to the U.S. Geological Survey, and has not been edited for conformity with Geological Survey editorial standards or stratigraphic nomenclature. Opinions expressed herein do not necessarily represent those of the Geological Survey.



THIS MAP COMPLIES WITH NATIONAL MAP ACCURACY STANDARDS
FOR SALE BY U.S. GEOLOGICAL SURVEY, DENVER, COLORADO 80225, OR WASHINGTON, D. C. 20242
AND BY THE OKLAHOMA GEOLOGICAL SURVEY, NORMAN, OKLAHOMA 73069
A FOLDER DESCRIBING TOPOGRAPHIC MAPS AND SYMBOLS IS AVAILABLE ON REQUEST



Compiled in 1980/1981

WILBURTON, OKLA.
N 3452.5—W 9515.7 5
1971
AMS 6953 IV NE, SERIES V883

**FEDERAL COAL RESOURCE OCCURRENCE MAP OF WILBURTON
7.5 MINUTE QUADRANGLE, LATIMER COUNTY, OKLAHOMA**

BY GEOLOGICAL SERVICES OF TULSA, INC., AND B. T. BRADY, USGS