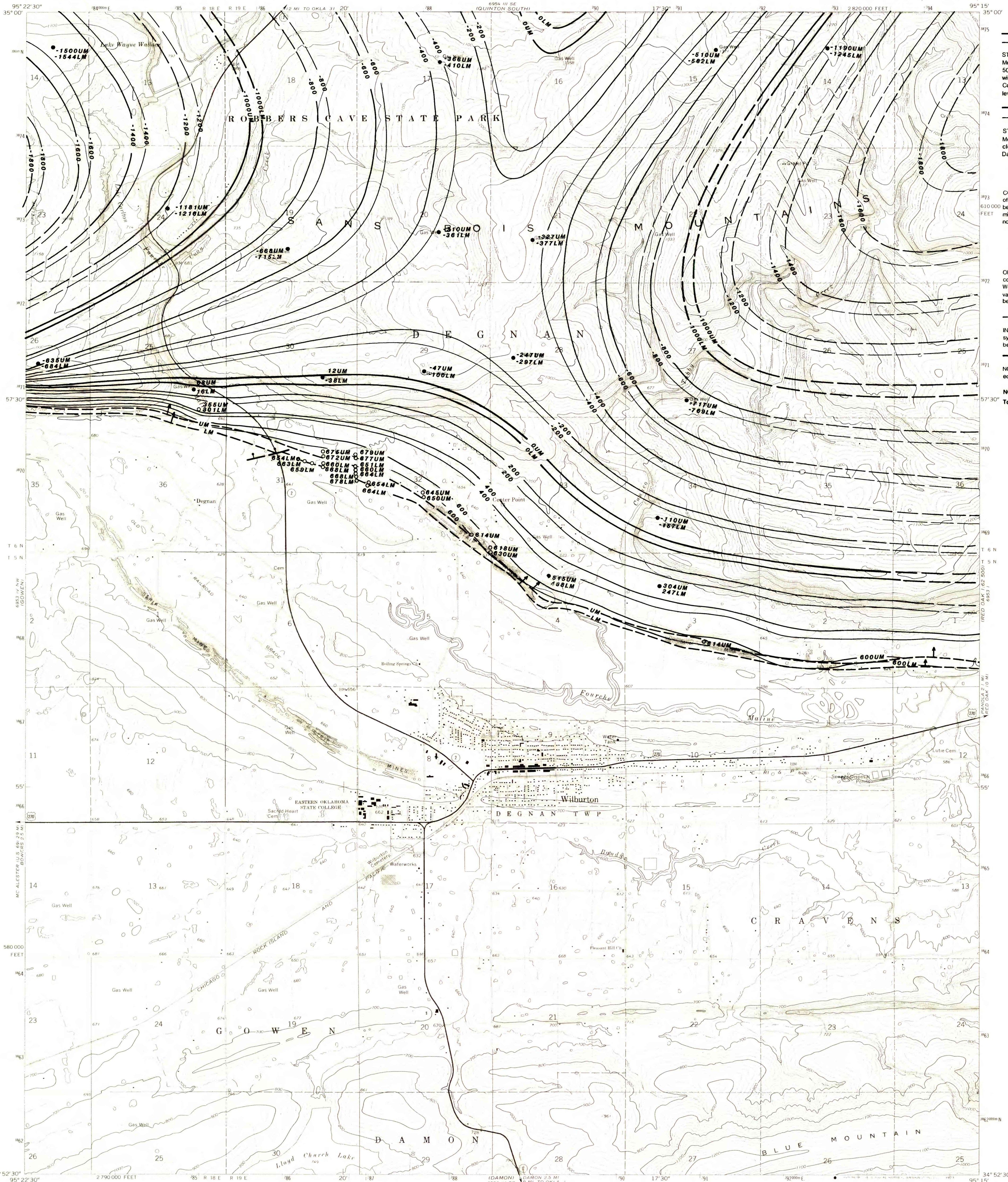


UNITED STATES
DEPARTMENT OF THE INTERIOR
GEOLOGICAL SURVEY

WILBURTON QUADRANGLE
OKLAHOMA-LATIMER CO.
7.5 MINUTE SERIES (TOPOGRAPHIC)



EXPLANATION

— 1000LM —
- 800 -

STRUCTURE CONTOURS—Drawn on top of the Upper McAlester coal bed. Solid where vertical accuracy within 50 feet; long dashed where vertical accuracy possibly not within 50 feet. Hachures indicate closed contours of basin. Contour interval is 200 feet(61.0m.). Datum is mean sea level.

— 1000LM —
- 800 -

STRUCTURE CONTOURS—Drawn on top of the Lower McAlester (Sigler) coal bed. Hachures indicate a closed depression. Contour interval 200 feet(61.0m.). Datum is mean sea level.

○ 515UM
● 468LM

COAL TEST MEASUREMENT—Showing altitude of top of coal bed, in feet, and the symbol of name of coal bed. Drill holes which did not intersect the coal bed or mine measured sections from which bed altitude could not be determined, are not shown.

○ 717UM
● 769LM

OIL AND GAS TEST HOLE—Showing altitude of top of coal bed, in feet, and the symbol of name of coal bed. Wells for which logs of the first 3,000 feet(914.4m.) interval were not available or wells whose logged interval began below the coal beds are not shown.

— LM —

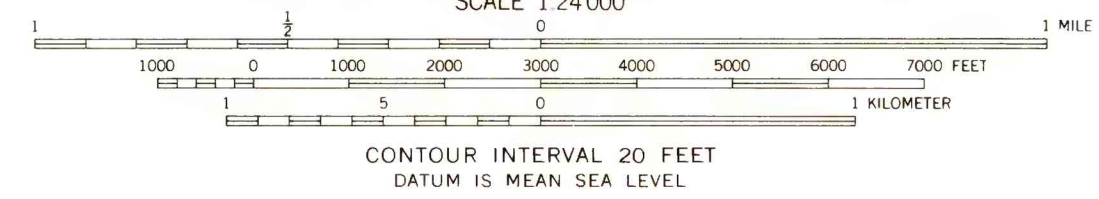
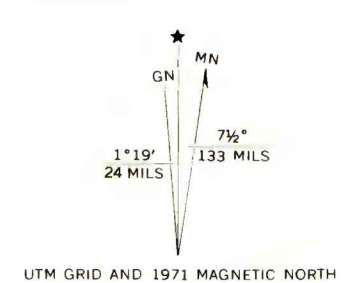
INFERRED TRACE OF COAL BED OUTCROP—Showing symbol of name of coal bed. Arrow points toward coal-bearing area.

NORMAL FAULT—Bar and ball on downthrown side; dashed where approximately located.

NOTE: Altitudes rounded to the nearest foot.
To convert feet to meters, multiply feet by 0.3048.

Base from U.S. Geological Survey, 1971.
This map intended for land-use planning purposes only.

This report was prepared under contract to the U.S. Geological Survey, and has not been edited for conformity with Geological Survey editorial standards or stratigraphic nomenclature. Opinions expressed herein do not necessarily represent those of the Geological Survey.



THIS MAP COMPLIES WITH NATIONAL MAP ACCURACY STANDARDS
FOR SALE BY U.S. GEOLOGICAL SURVEY, DENVER, COLORADO 80225, OR WASHINGTON, D.C. 20242
AND BY THE OKLAHOMA GEOLOGICAL SURVEY, NORMAN, OKLAHOMA 73069
A FOLDER DESCRIBING TOPOGRAPHIC MAPS AND SYMBOLS IS AVAILABLE ON REQUEST



WILBURTON, OKLA.
N3452.5—W9515.7 5
1971
AMS 6953 IV NE SERIES V883

**FEDERAL COAL RESOURCE OCCURRENCE MAP OF WILBURTON
7.5 MINUTE QUADRANGLE, LATIMER COUNTY, OKLAHOMA**
BY GEOLOGICAL SERVICES OF TULSA, INC., AND B. T. BRADY, USGS