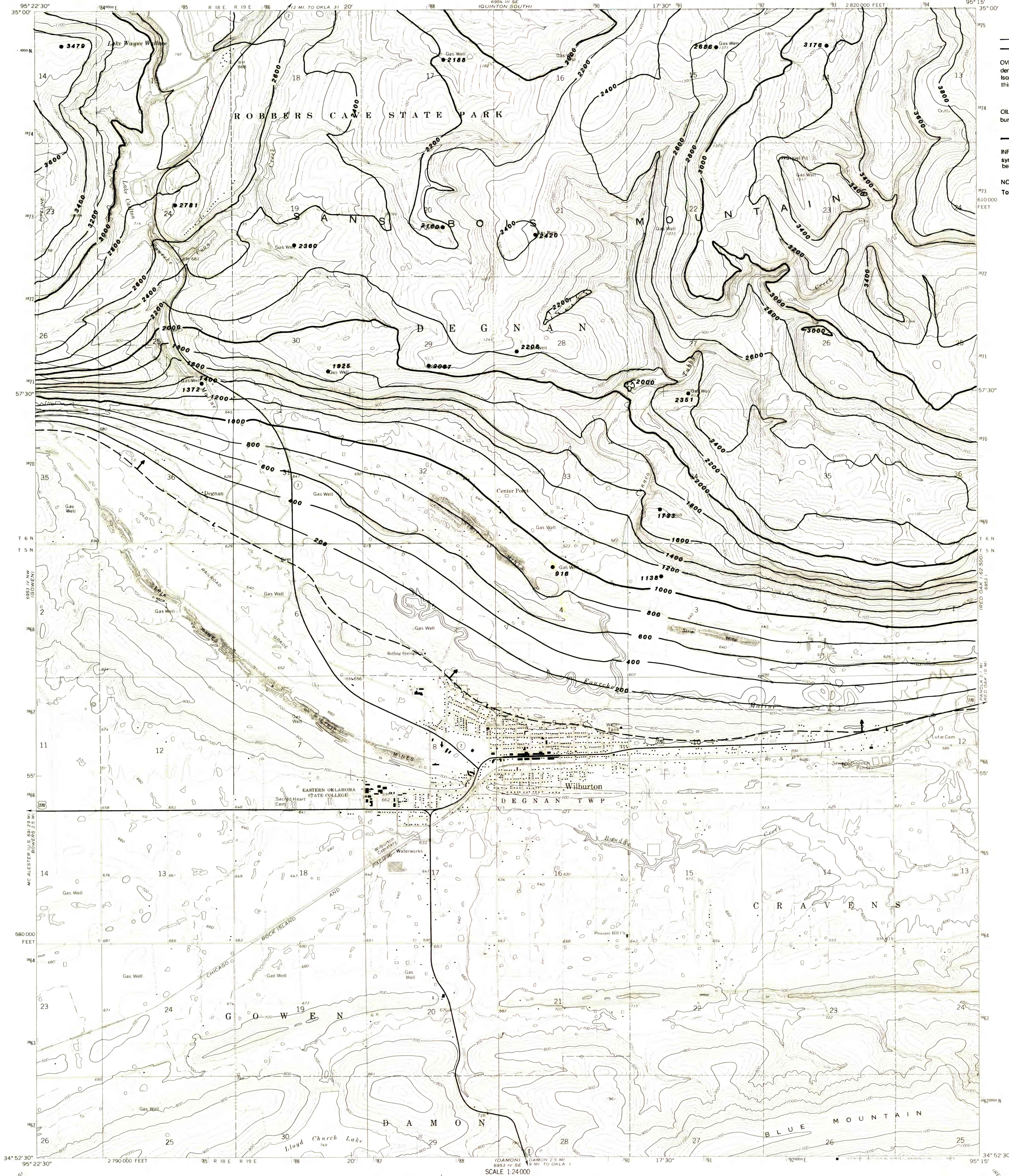


UNITED STATES
DEPARTMENT OF THE INTERIOR
GEOLOGICAL SURVEY

WILBURTON QUADRANGLE
OKLAHOMA—LATIMER CO.
7.5 MINUTE SERIES (TOPOGRAPHIC)



EXPLANATION

————— 3000
————— 2800

OVERBURDEN ISOPACHS—Showing thickness of overburden, in feet, from the surface to top of the coal bed. Isopach interval 200 feet (61.0m). Hachures indicate thinning.

● 1733

OIL AND GAS TEST HOLE—Showing thickness of overburden, in feet, from the surface to top of the coal bed.

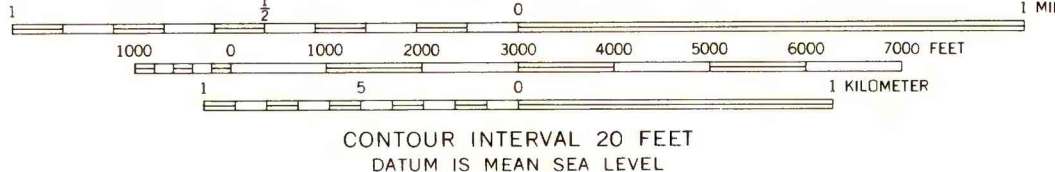
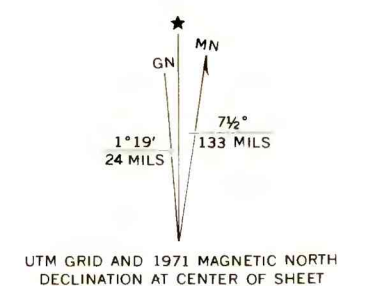
————— L —————

INFERRED TRACE OF COAL BED OUTCROP—Showing symbol of name of coal bed. Arrow points toward coal-bearing area.

NOTE: Thickness rounded to nearest foot.
To convert feet to meters, multiply feet by 0.3048.

Base from U.S. Geological Survey, 1971.
This map intended for land-use planning purposes only.

This report was prepared under contract to the U.S. Geological Survey, and has not been edited for conformity with Geological Survey editorial standards or stratigraphic nomenclature. Opinions expressed herein do not necessarily represent those of the Geological Survey.



THIS MAP COMPLIES WITH NATIONAL MAP ACCURACY STANDARDS
FOR SALE BY U.S. GEOLOGICAL SURVEY, DENVER, COLORADO 80225, OR WASHINGTON, D. C. 20242
AND BY THE OKLAHOMA GEOLOGICAL SURVEY, NORMAN, OKLAHOMA 73069
A FOLDER DESCRIBING TOPOGRAPHIC MAPS AND SYMBOLS IS AVAILABLE ON REQUEST



WILBURTON, OKLA.
N3452.5—W9515.7.5
1971
AMS 6953 IV NE, SERIES V883

**FEDERAL COAL RESOURCE OCCURRENCE MAP OF WILBURTON
7.5 MINUTE QUADRANGLE, LATIMER COUNTY, OKLAHOMA**
BY GEOLOGICAL SERVICES OF TULSA, INC., AND B. T. BRADY, USGS