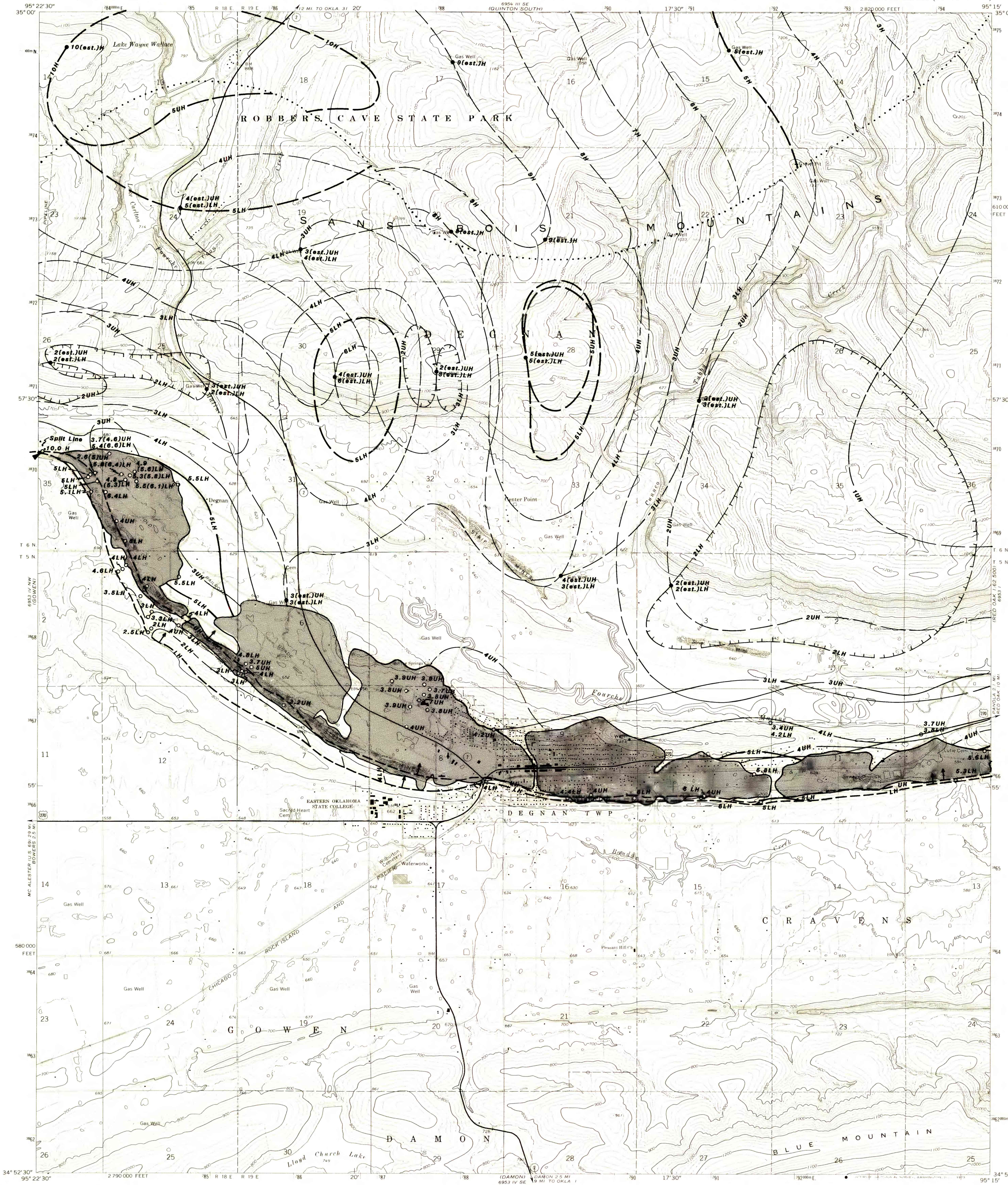


UNITED STATES
DEPARTMENT OF THE INTERIOR
GEOLOGICAL SURVEY

WILBURTON QUADRANGLE
OKLAHOMA—LATIMER CO.
7.5 MINUTE SERIES (TOPOGRAPHIC)



EXPLANATION

4H
5H

ISOPACH—Showing thickness of Hartshorne coal, in feet. Dashed where inferred. Isopach interval 1 foot (0.305m). Hachures indicate an area of local thinning of coal bed.

4UH
5UH

ISOPACHS OF THE UPPER HARTSHORNE SPLIT OF THE HARTSHORNE COAL BED—Showing thickness in feet. Isopach interval 1 foot (0.305m).

4LH
5LH

ISOPACH OF THE LOWER HARTSHORNE SPLIT OF THE HARTSHORNE COAL BED—Showing thickness in feet. Isopach interval 1 foot (0.305m).

0.5.SLH

COAL TEST MEASUREMENT—Showing measured thickness of coal, in feet, in areas where the structure map exhibited dip less than 25° and the symbol of name of coal bed. Drill holes which do not intersect the coal or from which a coal thickness could not be determined are not shown.

3.7(4.6)UH
5.4(6.8)UH

COAL TEST MEASUREMENT—Showing calculated true thickness of coal, in feet; measured apparent thickness of coal (in parentheses), in feet; and the symbol of name of coal bed. True thickness was calculated in areas where the structure map exhibited dip in excess of 25°.

4(est.)UH
6(est.)LH

OIL AND GAS TEST HOLE—Showing thickness of coal estimated from well logs, in feet, and the symbol of name of coal bed.

MINE WORKINGS AND STRIPPED AREAS—Showing mined-out areas. Boundaries are approximately located.

LH

INFERRED TRACE OF COAL BED OUTCROP—Showing symbol of name of coal bed. Arrow points toward coal-bearing area.

.....

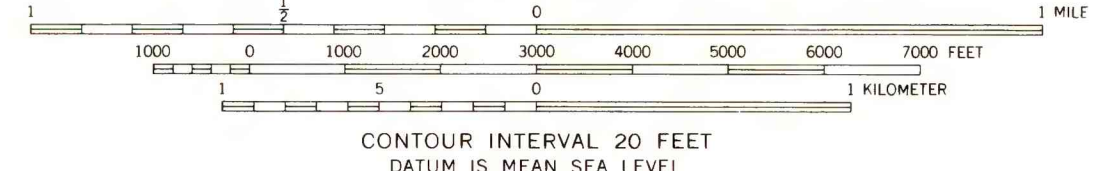
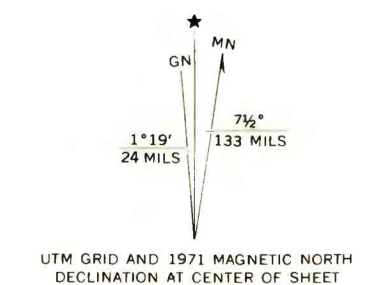
SPLIT LINE—Line along which the Hartshorne coal bed splits into the Upper and Lower Hartshorne coal beds. This line corresponds to the 1 foot (0.305m) interburden isopach.

NOTE: Thickness reported to tenths of feet only when resolution of data permitted.

To convert feet to meters, multiply feet by 0.3048.

Base from U.S. Geological Survey, 1971.
This map intended for land-use planning purposes only.

This report was prepared under contract to the U.S. Geological Survey, and has not been edited for conformity with Geological Survey editorial standards or stratigraphic nomenclature. Opinions expressed herein do not necessarily represent those of the Geological Survey.



THIS MAP COMPLIES WITH NATIONAL MAP ACCURACY STANDARDS
FOR SALE BY U.S. GEOLOGICAL SURVEY, DENVER, COLORADO 80225, OR WASHINGTON, D.C. 20242
AND BY THE OKLAHOMA GEOLOGICAL SURVEY, NORMAN, OKLAHOMA 73069
A FOLDER DESCRIBING TOPOGRAPHIC MAPS AND SYMBOLS IS AVAILABLE ON REQUEST



WILBURTON, OKLA.
N3452.5—W9515.7/5
1971
AMS 6953 IV NE—SERIES V883

**FEDERAL COAL RESOURCE OCCURRENCE MAP OF WILBURTON
7.5 MINUTE QUADRANGLE, LATIMER COUNTY, OKLAHOMA**
BY GEOLOGICAL SERVICES OF TULSA, INC., AND B. T. BRADY, USGS