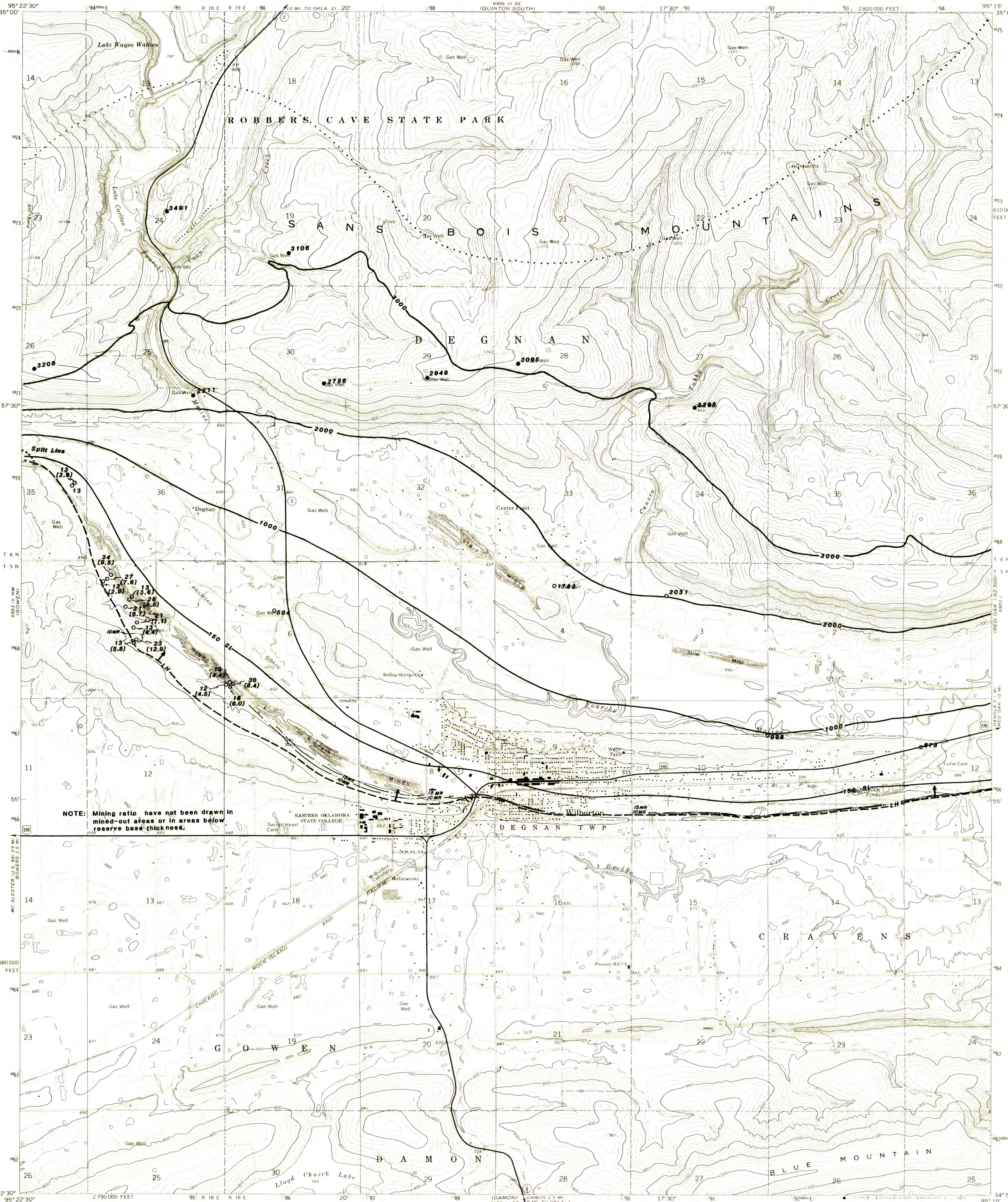


UNITED STATES  
DEPARTMENT OF THE INTERIOR  
GEOLOGICAL SURVEY

WILBURTON QUADRANGLE  
OKLAHOMA—LATIMER CO.  
7.5 MINUTE SERIES (TOPOGRAPHIC)



**EXPLANATION**

**2000** ———  
OVERBURDEN ISOPACHS—Showing thickness of overburden, in feet, from the surface to top of the Lower Split of the coal bed. Isopach interval 1000 feet (305m)

**30 (8.4)**  
COAL TEST MEASUREMENT—Showing thickness of overburden, in feet, from the surface to top of the Lower Split of the Hartshorne coal bed. Mining ratio numbers in brackets.

● 1157  
OIL AND GAS TEST HOLE—Showing thickness of overburden, in feet, from the surface to top of the coal bed.

— LH ———  
INFERRED TRACE OF COAL BED OUTCROP— Showing symbol of name of coal bed. Arrow points toward coal-bearing area.

— 15MR ———  
MINING-RATIO CONTOUR—Number indicates cubic yards of overburden per ton of recoverable coal by surface mining methods. Contours shown only in areas underlain by coal of Reserve Base thickness within the stripping-limit (in this quadrangle, the 150-foot-overburden isopach). To convert mining ratio to cubic meters of overburden per metric ton of recoverable coal, multiply mining ratio by 0.8426.

— 150 SL ———  
150 SL STRIPPING-LIMIT LINE— Boundary for surface mining (in this quadrangle, the 150-foot-overburden isopach). Arrow points toward the area suitable for surface mining where the recovery factor is 80 percent, and away from the area suitable for subsurface mining (down dip to the 3,000-foot-overburden isopach) where the recovery factor is 50 percent.

.....  
SPLIT LINE—Line along which the Hartshorne coal bed splits into the Upper and Lower Hartshorne coal beds. This line corresponds to the 1 foot (0.305m) interburden isopach.

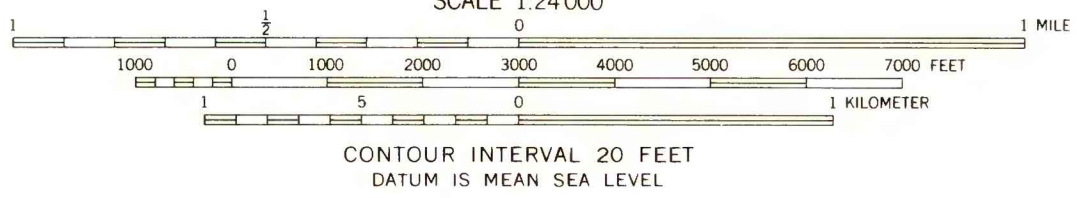
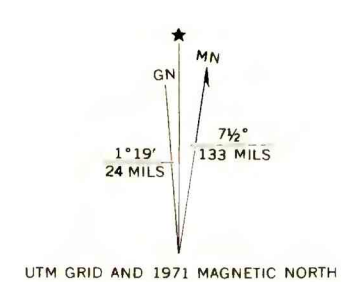
NOTE: Thickness reported to tenths of feet only when resolution of data permitted.

To convert feet to meters, multiply feet by 0.3048.

NOTE: Mining ratio have not been drawn in mined-out areas or in areas below reserve base thickness.

Base from U.S. Geological Survey, 1971.  
This map intended for land-use planning purposes only.

This report was prepared under contract to the U.S. Geological Survey, and has not been edited for conformity with Geological Survey editorial standards or stratigraphic nomenclature. Opinions expressed herein do not necessarily represent those of the Geological Survey.



CONTOUR INTERVAL 20 FEET  
DATUM IS MEAN SEA LEVEL

THIS MAP COMPLIES WITH NATIONAL MAP ACCURACY STANDARDS  
FOR SALE BY U. S. GEOLOGICAL SURVEY, DENVER, COLORADO 80225, OR WASHINGTON, D. C. 20242  
AND BY THE OKLAHOMA GEOLOGICAL SURVEY, NORMAN, OKLAHOMA 73069  
A FOLDER DESCRIBING TOPOGRAPHIC MAPS AND SYMBOLS IS AVAILABLE ON REQUEST



Compiled in 1980/1981

WILBURTON, OKLA.  
N3452.5—W9515.7 5  
1971  
AMS 6953 IV NE, SERIES V883

# FEDERAL COAL RESOURCE OCCURRENCE MAP OF WILBURTON 7.5 MINUTE QUADRANGLE, LATIMER COUNTY, OKLAHOMA

BY GEOLOGICAL SERVICES OF TULSA, INC., AND B. T. BRADY, USGS