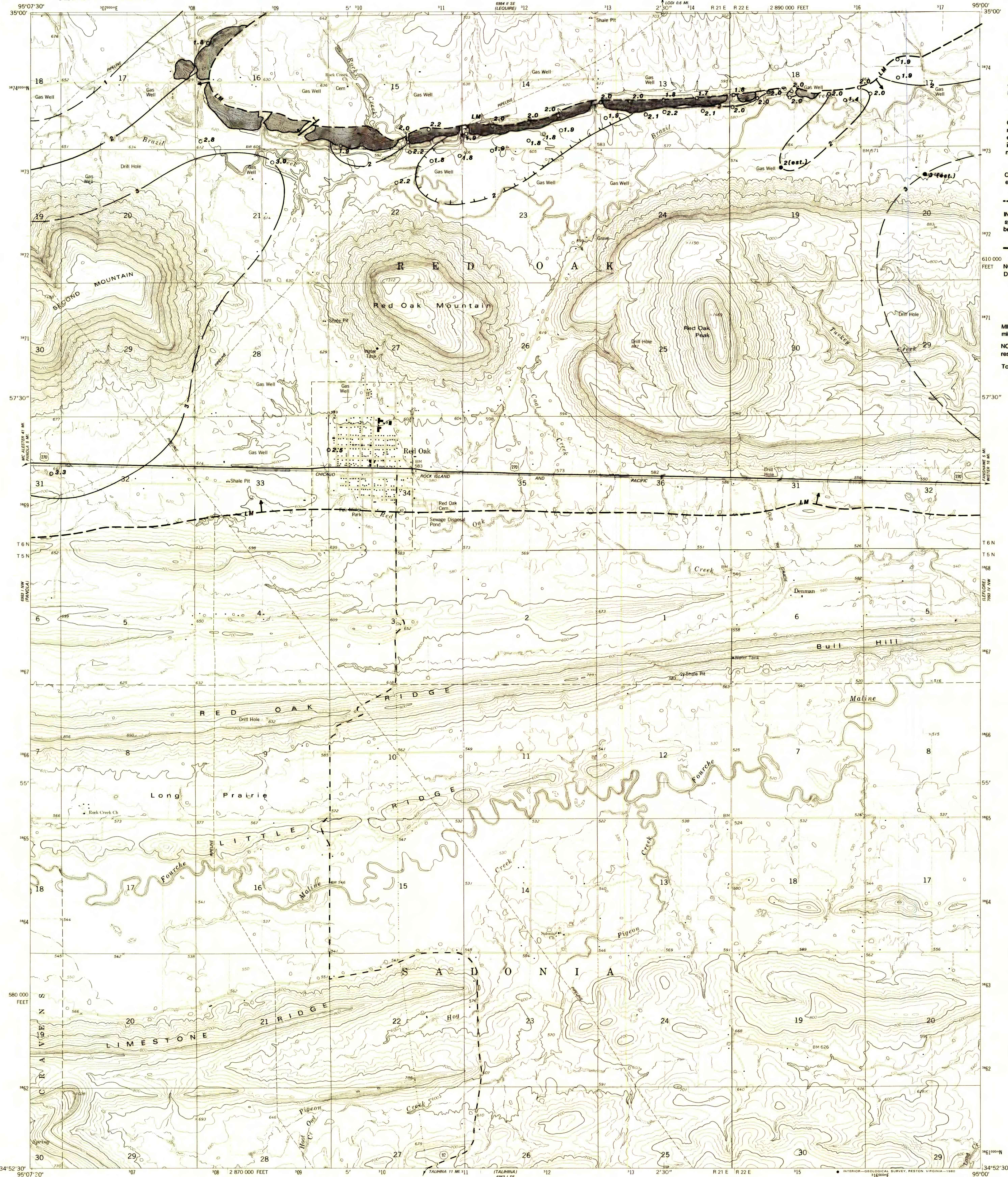
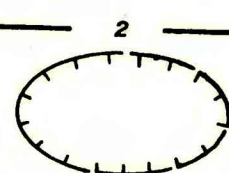




UNITED STATES  
DEPARTMENT OF THE INTERIOR  
GEOLOGICAL SURVEY

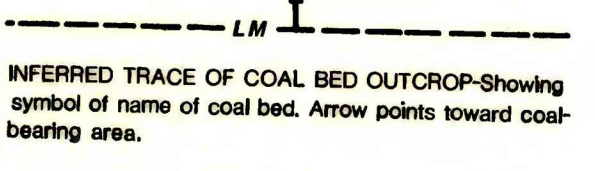


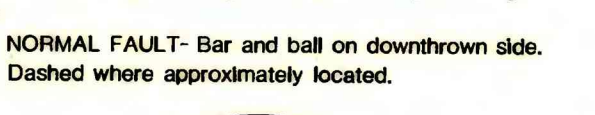
**EXPLANATION**

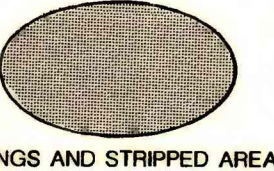
 ISOPACHS—Showing thickness of coal, in feet. Dashed where inferred. Isochach interval 1 foot (0.305m.). Hachures indicate an area of local thinning of coal bed.

 COAL TEST MEASUREMENT—Showing measured thickness of coal, in feet, in areas where the structure map exhibited dip less than 25°. Drill holes which do not intersect the coal or from which a coal thickness could not be determined are not shown.

 OIL AND GAS TEST HOLE—Showing thickness of coal estimated from well logs, in feet.

 INFERRED TRACE OF COAL BED OUTCROP—Showing symbol of name of coal bed. Arrow points toward coal-bearing area.

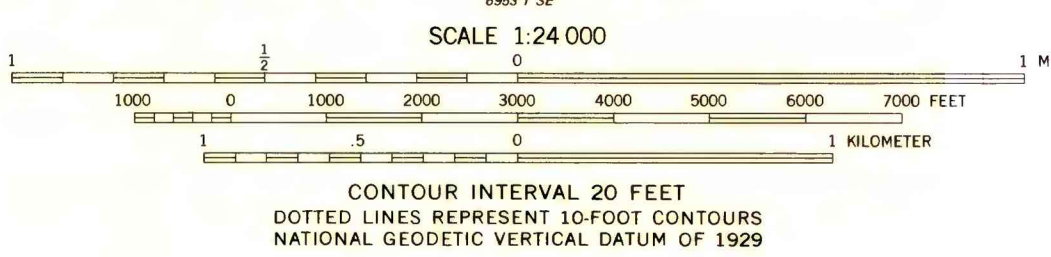
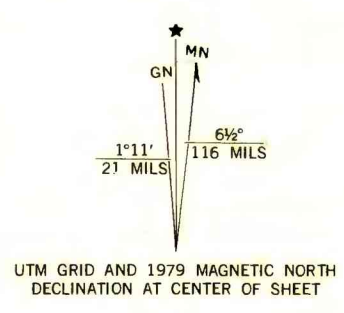
 NORMAL FAULT—Bar and ball on downthrown side. Dashed where approximately located.

 MINE WORKINGS AND STRIPPED AREAS—Showing mined-out areas. Boundaries are approximately located.

NOTE: Thickness reported to tenths of feet only when resolution of data permitted.

To convert feet to meters, multiply feet by 0.3048.

This report was prepared under contract to the U.S. Geological Survey, and has not been edited for conformity with Geological Survey editorial standards or stratigraphic nomenclature. Opinions expressed herein do not necessarily represent those of the Geological Survey.



# FEDERAL COAL RESOURCE OCCURRENCE MAP OF THE NORTHEAST QUARTER OF THE RED OAK 15-MINUTE QUADRANGLE, LATIMER COUNTY, OKLAHOMA

COMPILED IN 1980

This map intended for land use planning purposes only.

BY GEOLOGICAL SERVICES OF TULSA, INC., AND B. T. BRADY, USGS

PLATE 5  
ISOPACH MAP OF THE LOWER  
MCALESTER COAL BED