

EXPLANATION

0
200

STRUCTURE CONTOURS—Drawn on top of coal bed. Solid where vertical accuracy within 50 feet, long dashed where vertical accuracy possibly not within 50 feet. Contour interval is 200 feet (61.0 m.) Datum is mean sea level.

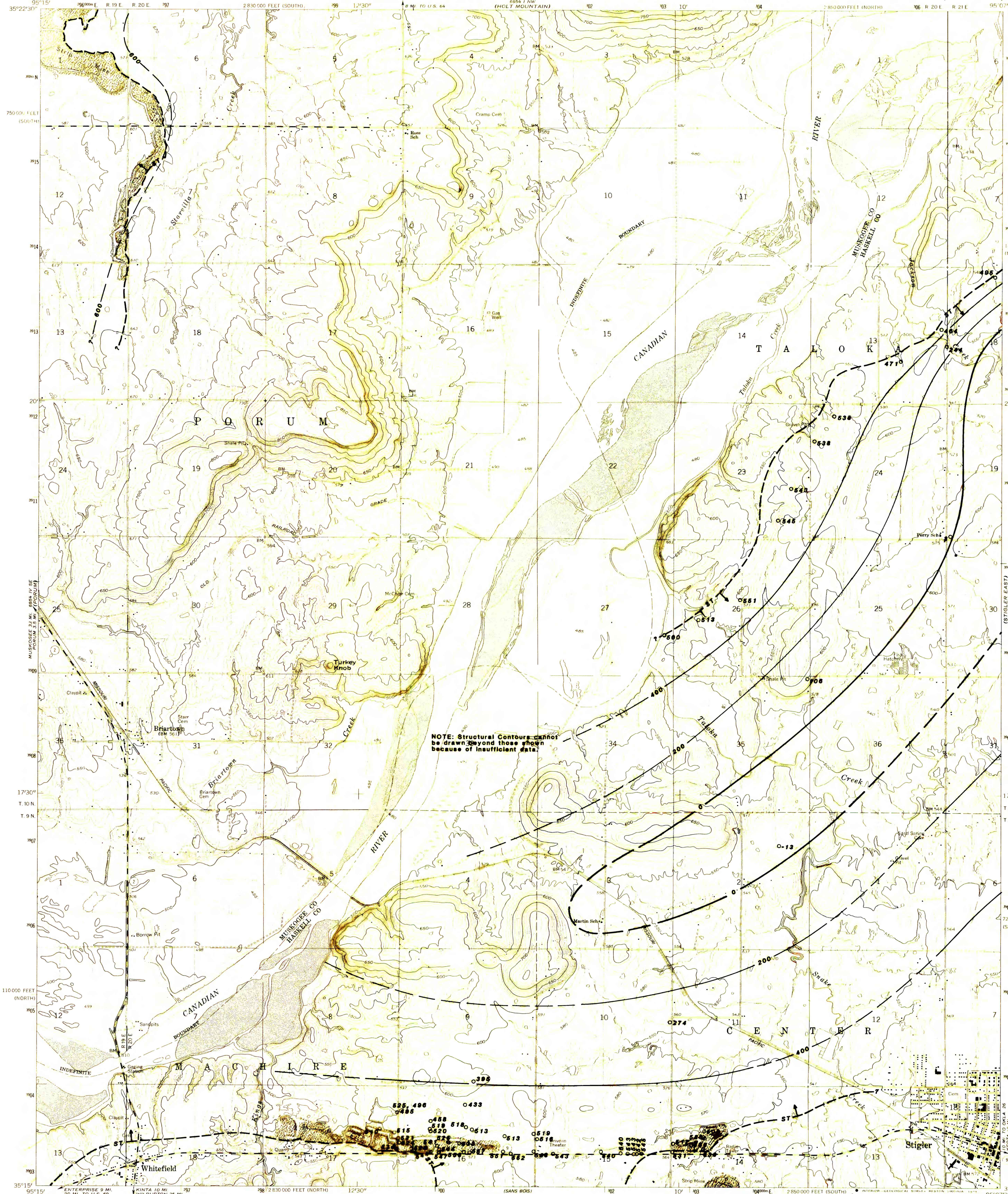
O 106

COAL TEST MEASUREMENT—Showing altitude of top of coal beds, in feet. Drill holes which did not intersect the coal bed, or mine measured sections from which bed altitude could not be determined, are not shown.

ST

INFERRED TRACE OF COAL BED OUTCROP—Showing symbol of name of coal bed. Arrow points toward coal bearing area.

NOTE: Altitudes rounded to the nearest foot. To convert feet to meters, multiply feet by 0.3048.



NOTE: Structural Contours cannot be drawn beyond those shown because of insufficient data.

This report was prepared under contract to the U.S. Geological Survey, and has not been edited for conformity with Geological Survey editorial standards or stratigraphic nomenclature. Opinions expressed herein do not necessarily represent those of the Geological Survey.

This map intended for land-use planning purposes only.

UTM GRID AND 1979 MAGNETIC NORTH DECLINATION AT CENTER OF SHEET

SCALE 1:24,000

CONTOUR INTERVAL 10 FEET
DOTTED LINES REPRESENT 5-FOOT CONTOURS
NATIONAL GEODETIC VERTICAL DATUM OF 1929

ROAD CLASSIFICATION

- Medium duty
- Light duty
- Unimproved dirt
- Slate Route

STIGLER WEST, OKLA.
N 3515—W 9507 5/ 7.5

1962
PHOTOREVISED 1979
AMS 6954 1 SW—SERIES V883

OKLAHOMA
QUADRANGLE LOCATION

FEDERAL COAL RESOURCE OCCURRENCE MAP OF THE STIGLER WEST 7.5 MINUTE QUADRANGLE, HASKELL AND MUSKOGEE COUNTIES, OKLAHOMA
BY GEOLOGICAL SERVICES OF TULSA, INC., AND B. T. BRADY, USGS