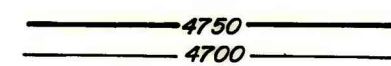


EXPLANATION



STRUCTURE CONTOURS—Drawn on top of coal bed. Contour interval 50 feet. Datum is mean sea level. Short dashed line where coal is burned or eroded.

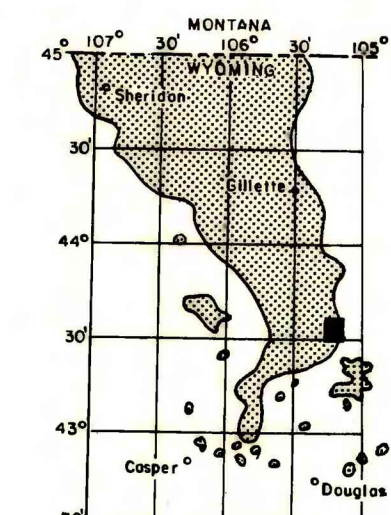
DRILL HOLE—Showing elevation at top of coal bed, in feet.



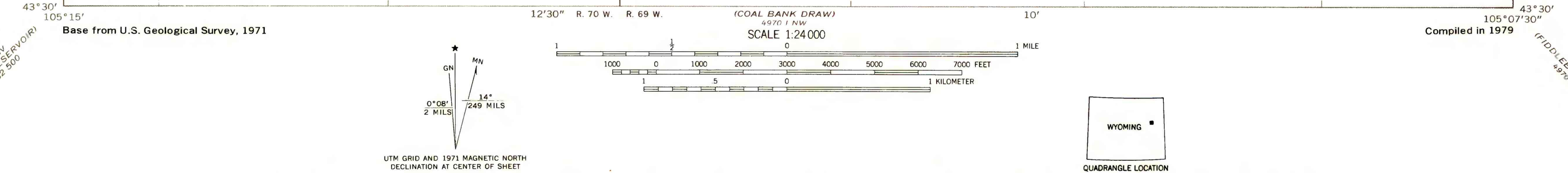
LIMIT OF BURNING—"V" symbol indicates burned rock with dashed line showing limit of burning. Arrow points toward unburned coal area.

FAULT—D indicates downthrown side.

To convert feet to meters multiply feet by 0.3048.



MAP SHOWING LOCATION OF THE PINEY CANYON SW QUADRANGLE AND THE POWDER RIVER BASIN KNOWN RECOVERABLE COAL RESOURCE AREA (STIPPLED), WYOMING



COAL RESOURCE OCCURRENCE MAP OF THE PINEY CANYON SW QUADRANGLE, CAMPBELL COUNTY, WYOMING

BY  
IntraSearch  
1979

PLATE 5  
STRUCTURE CONTOUR MAP OF  
WYODAK COAL BED

This report has not been edited for conformity with U.S. Geological Survey editorial standards or stratigraphic nomenclature.