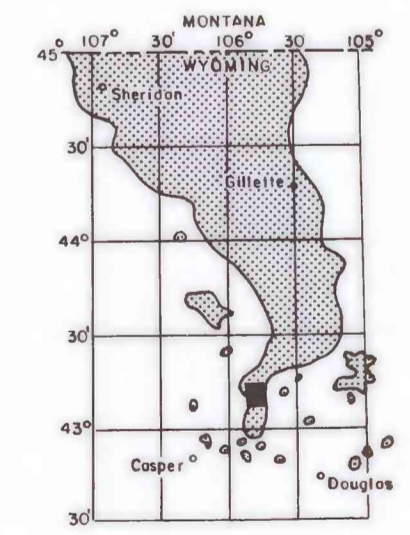
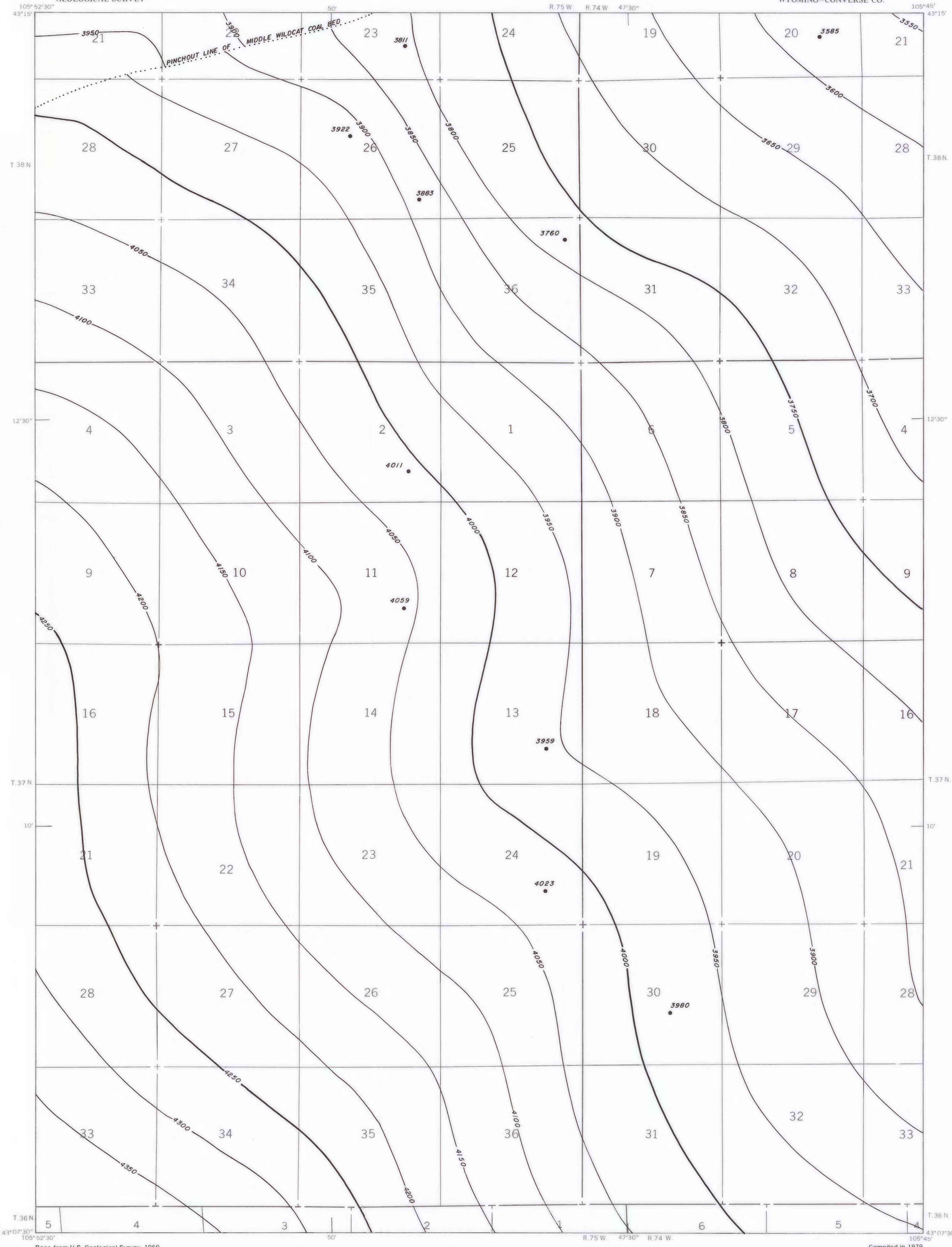


EXPLANATION

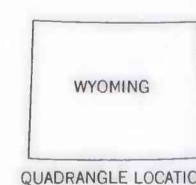
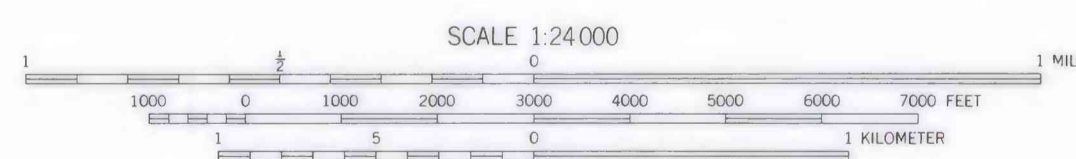
— 3800 —  
— 3750 —  
STRUCTURE CONTOURS—Drawn on top of coal bed. Contour interval 50 feet. Datum is mean sea level.

● 3760 ●  
DRILL HOLE—Showing elevation at top of coal bed, in feet.

To convert feet to meters multiply feet by 0.3048.



MAP SHOWING LOCATION OF THE NE 1/4 FIFTY-FIVE RANCH 15' QUADRANGLE AND THE POWDER RIVER BASIN KNOWN RECOVERABLE COAL RESOURCE AREA (STIPPLED), WYOMING



This report has not been edited for conformity with U.S. Geological Survey editorial standards or stratigraphic nomenclature.

COAL RESOURCE OCCURRENCE MAP OF THE NE 1/4 FIFTY-FIVE RANCH 15' QUADRANGLE, CONVERSE COUNTY, WYOMING

BY  
IntraSearch  
1979

PLATE 15  
STRUCTURE CONTOUR MAP OF  
WILDCAT COAL BED